

**SURVEYOR'S RECORD
BOOK**

**Montgomery County
Indiana**

No 14

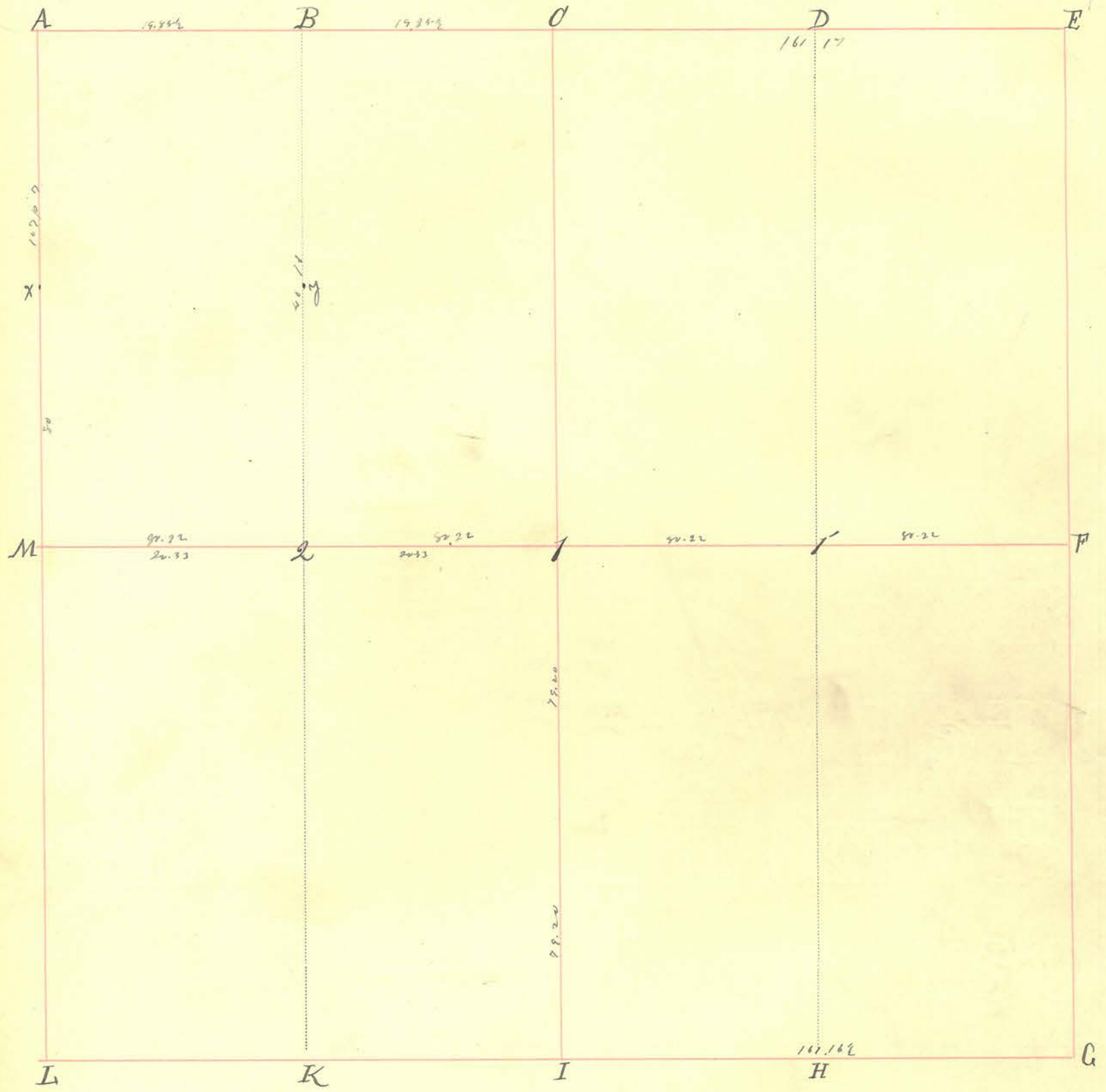
PT T 19N R6W

PT T20N R6W

PT WAYNE

PT COAL CREEK

Section 7 Township 19 North, Range 6 West.



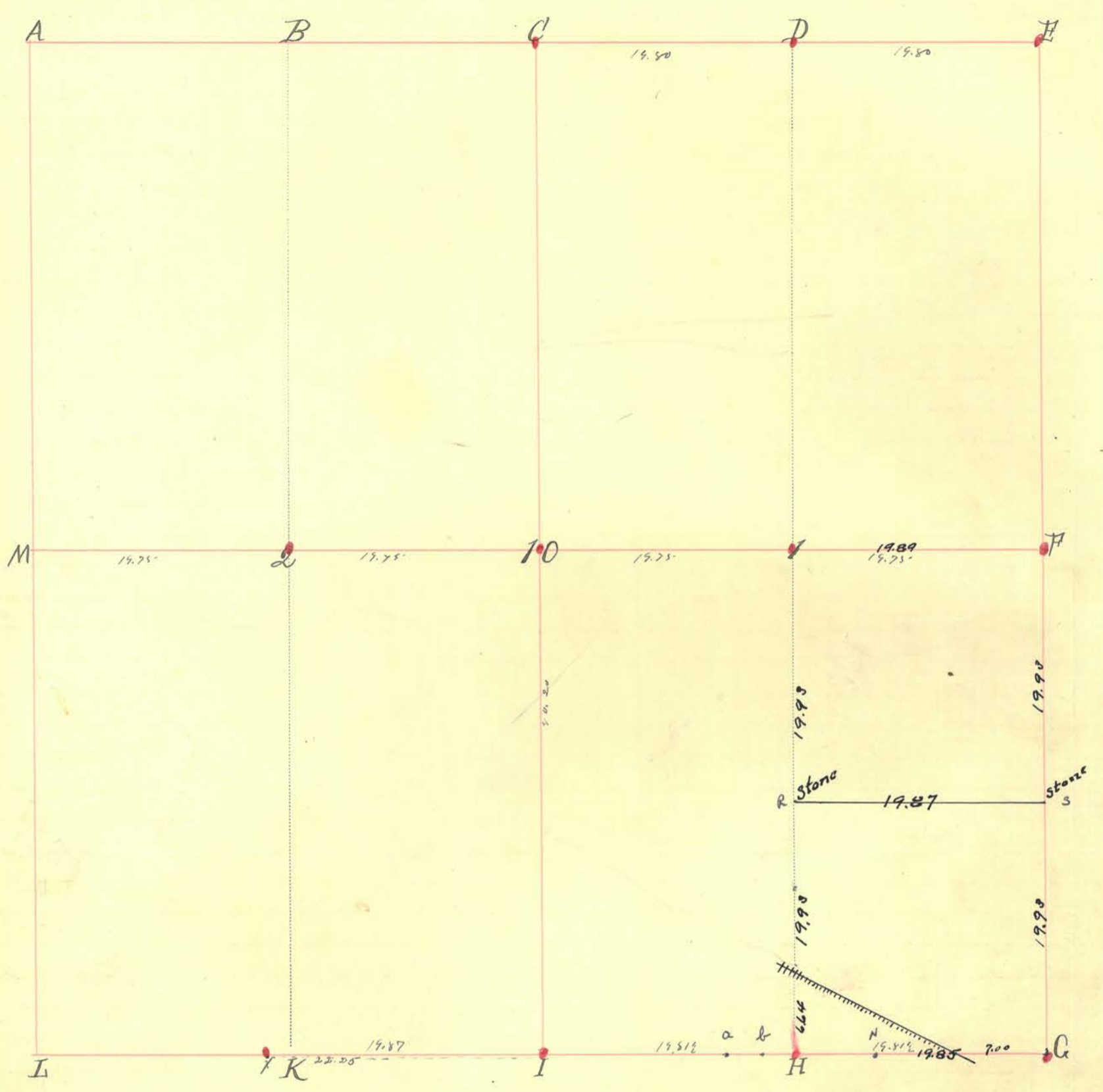
INDEX.	CORNERS.	SIZE.	MARKS.	WITNESSES.	SIZE.	DIRECTION.	DISTANCE.	MARKS.
A.								
B.								
C.	Stone.			Red Oak. White Oak.	20" 14"	N. 10° W S. 21° E	18. 15.	
D.								
E.	Stone.							
F.								
G.								
H.								
I.								
K.				Sugar- Eln.	16" 15"	S. 61° E N. 82 1/2° W	19. 20.	
L.								
M.								
I.								
I.				Black Oak. White Oak.	20" 15"	N. 31 1/2° W S. 61° E	32. 61.	
L.				B. Hickory. W. Hickory.	20" 14"	S. 58° E N. 16° E	23. 43.	

INDEX.	CORNERS.	SIZE.	MARKS.	WITNESSES.	SIZE.	DIRECTION.	DISTANCE.	MARKS.
<p>x. y.</p>	<p>Stone Stone</p>			<p>Burr Oak.</p>	<p>6" 10"</p>	<p>S 39° W N 56½° E</p>	<p>5. 8.</p>	<p>(Buck, CS)</p>
<p>February 3rd 1832. W. C. Jr and E. J. P. Jr for G. Jones Plat given. W. J. V. Jr. for John Bennett. H. C. D.</p>								

INDEX.	CORNERS.	SIZE.	MARKS.	WITNESSES.	SIZE.	DIRECTION.	DISTANCE.	MARKS.
--------	----------	-------	--------	------------	-------	------------	-----------	--------

March 14th 1867.
 S.E. qr for Asa Rem. S.W. qr for Edw'd
 Sherman. S.W. qr for William Gerard.
 [Stamp] "Wm. A. Remond"

Section 10 Township 19 North, Range 6 West.



INDEX.	CORNERS.	SIZE.	MARKS.	WITNESSES.	SIZE.	DIRECTION.	DISTANCE.	MARKS.
A.								
B.								
C.	Stone			W. Oak	24	S 27 W	20	
D.	stone							
E.	Stone							
F.	Stone							
G.	Stone							
H.	Stone			Elm. Beech.	15" 14"	S. 70° W. S. 14° E.	15. 36.	
I.	Stone			Orchard Oak. Beech. Ironwood	16" 20" 8"	N. 28° W N. 27° W S. 27° E	14. 3 22.	rough.
K.								
L.								
M.								
10.	Stone.			B. Walnut	17"	N. 53° E	32.	
1.	Stone.			Elm.	24"	N. 84 1/2° E	35.	
2.	Stone.			corner "K"				
X	stake			Beech	18"	East N. 52° 45' E	23.38 20.	rough.

INDEX.	CORNERS.	SIZE.	MARKS.	WITNESSES.	SIZE.	DIRECTION.	DISTANCE.	MARKS.
--------	----------	-------	--------	------------	-------	------------	-----------	--------

February 12th 1858.

W¹/₂ of N.W. qr for France Beck. E¹/₂ of said qr. & also S.W. qr for Levi Fowls. 60 acres of the North end of the W¹/₂ of N.E. qr for L. Neway. E¹/₂ of N.E. qr for John Parker. W¹/₂ of S.E. qr and balance of S. end of W¹/₂ N.E. qr for Thomas Beck. E¹/₂ of S.E. qr for A. Bunnell.

L. C. H. [Signature]

June 13th 1891.

Due notice having been given by W^{ro}. J. Darnall, June 1st 1891 to Anna M. Simpson & Thomas Courstony. as evidenced by return to me made, survey was made as shown on plat.

James M. Wraugh.
Deputy Surveyor.

 Vide "All Records" for Plat.

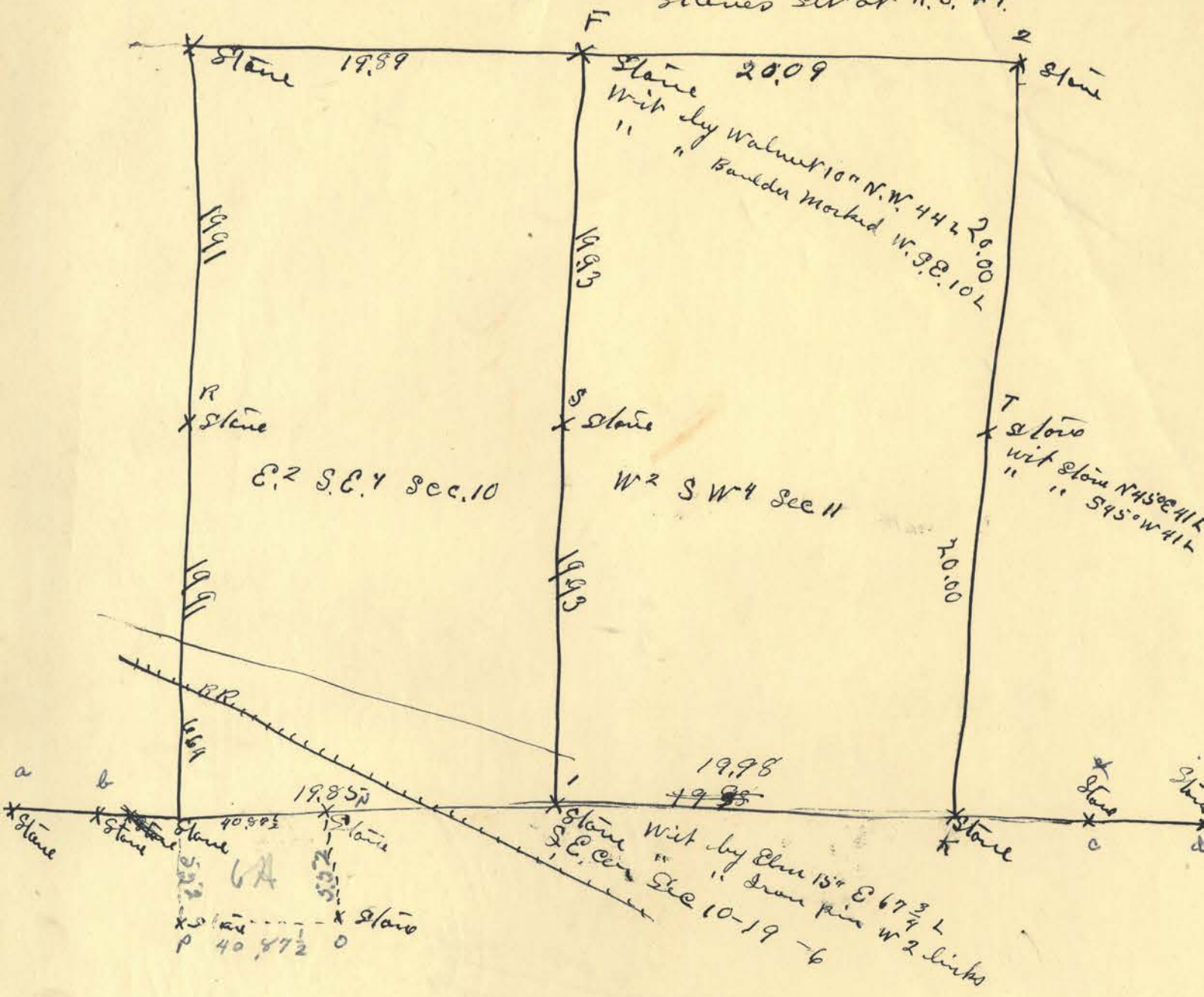
R
S
N
a
b

STONE
STONE
STONE
"
"

} SEE ENCLOSED SURVEY APRIL 7, 1916

Surveyed Apr 7, 1916

Stanes SW at R.S. & T.



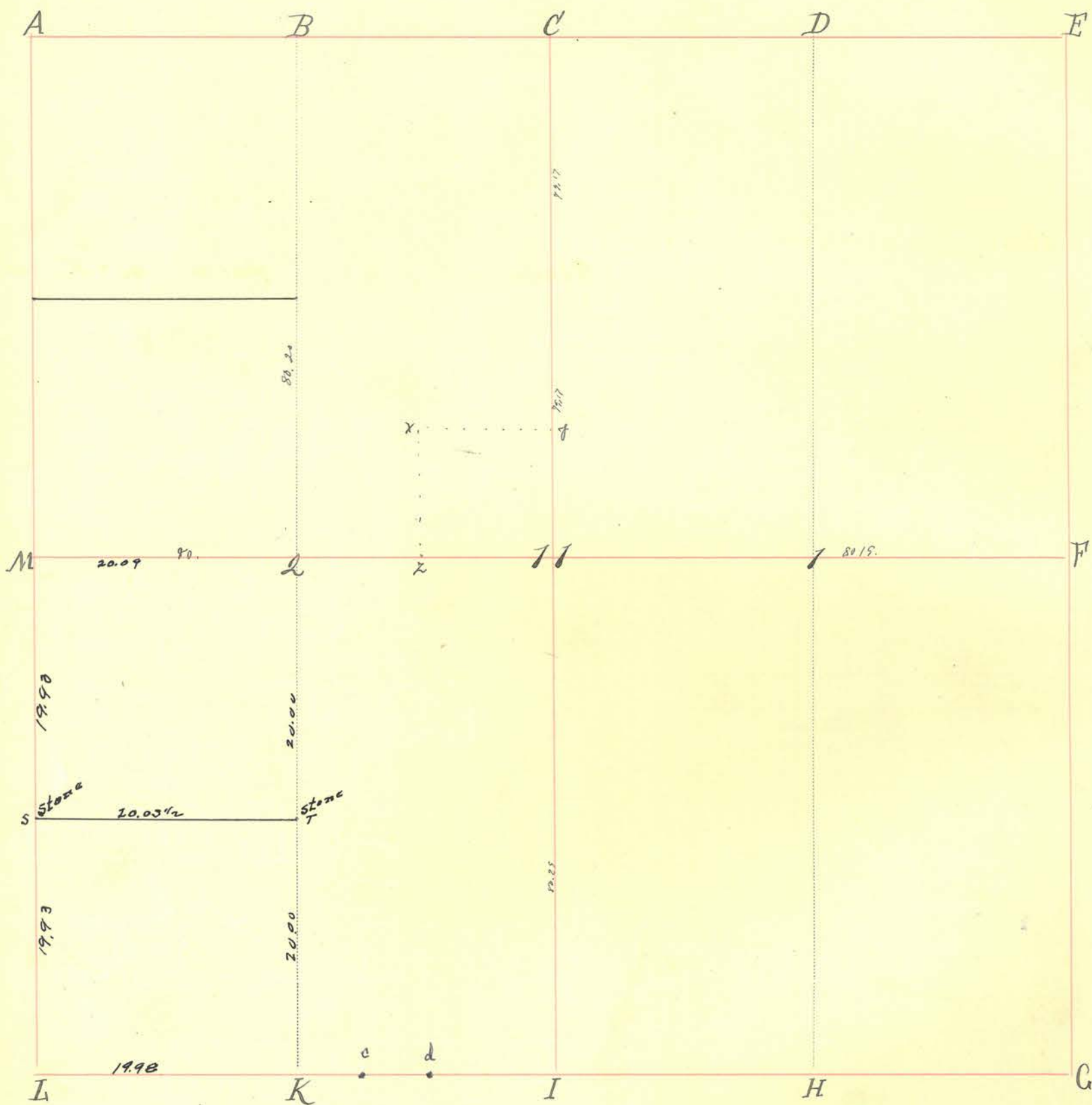
2009
1998
4007

16.50
330.0
330
9900

990
10890.25
2178000 80666

27
180
162
180
162
180

Section 17 Township 19 North, Range 6 West.

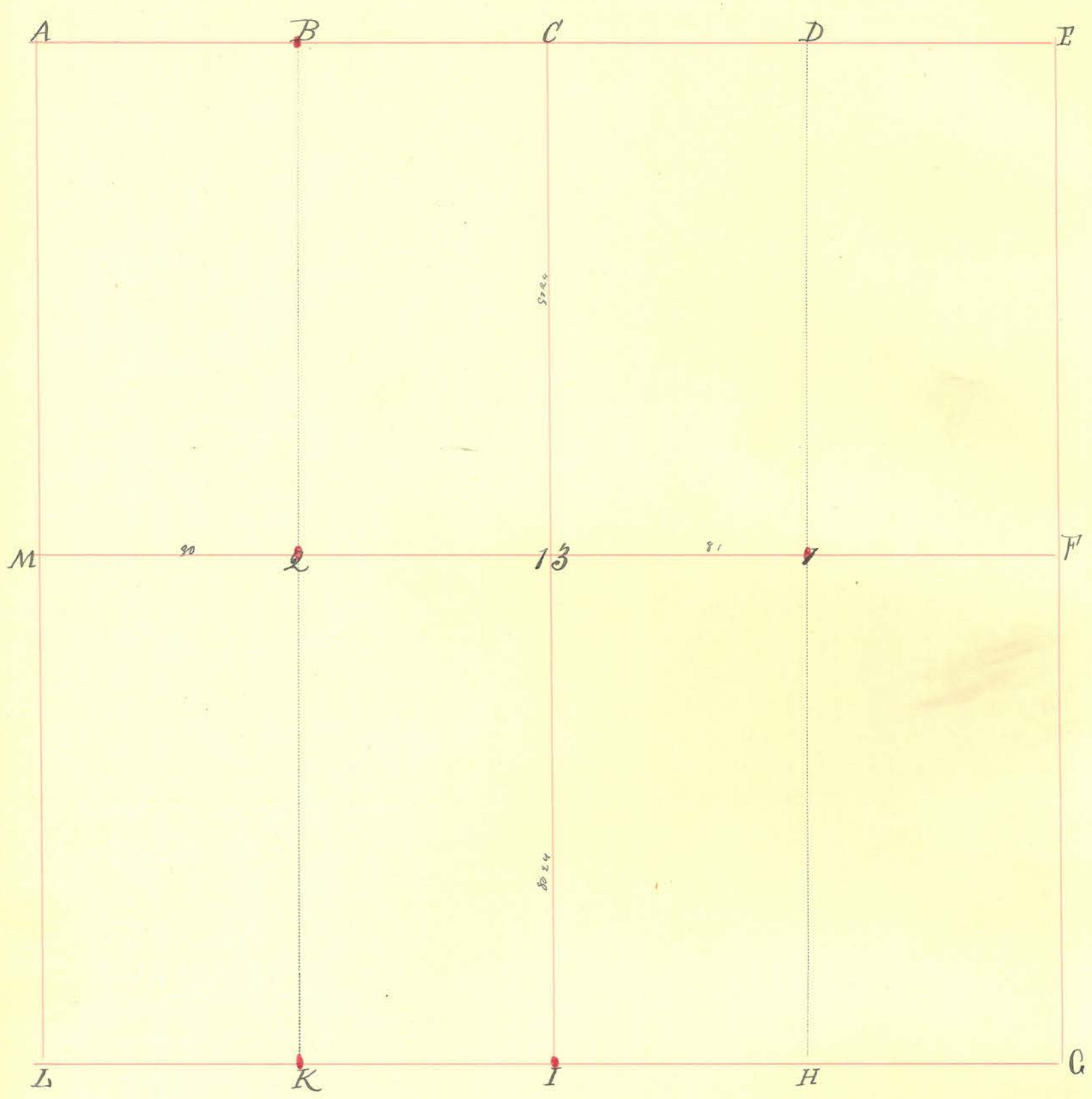


INDEX.	CORNERS.	SIZE.	MARKS.	WITNESSES.	SIZE.	DIRECTION.	DISTANCE.	MARKS.
A.								
B.				Beech.	31"	S. 7° W	29.	
C.				" "	12"	N. 11° E	45.	
D.				Hickory	15"	N. 41° W	31	
E.				Elm.	10"	S. 32° E	28.	
F.								
G.								
H.				Sugar	24"	S. 68° E	26.	
I.				Iron P.N	-	N. 20° W	35.	
K.	STONE							
L.	STONE							
M.	STONE							
11.								
1.				B. Oak.	4"	N. 18° E	4.	
Q.	STONE			Hickory	6"	S. 18° E	4.	
				Sugar.	10"	N. 21° E	25.	
				B. Elm.	20"	S. 7° W	29.	

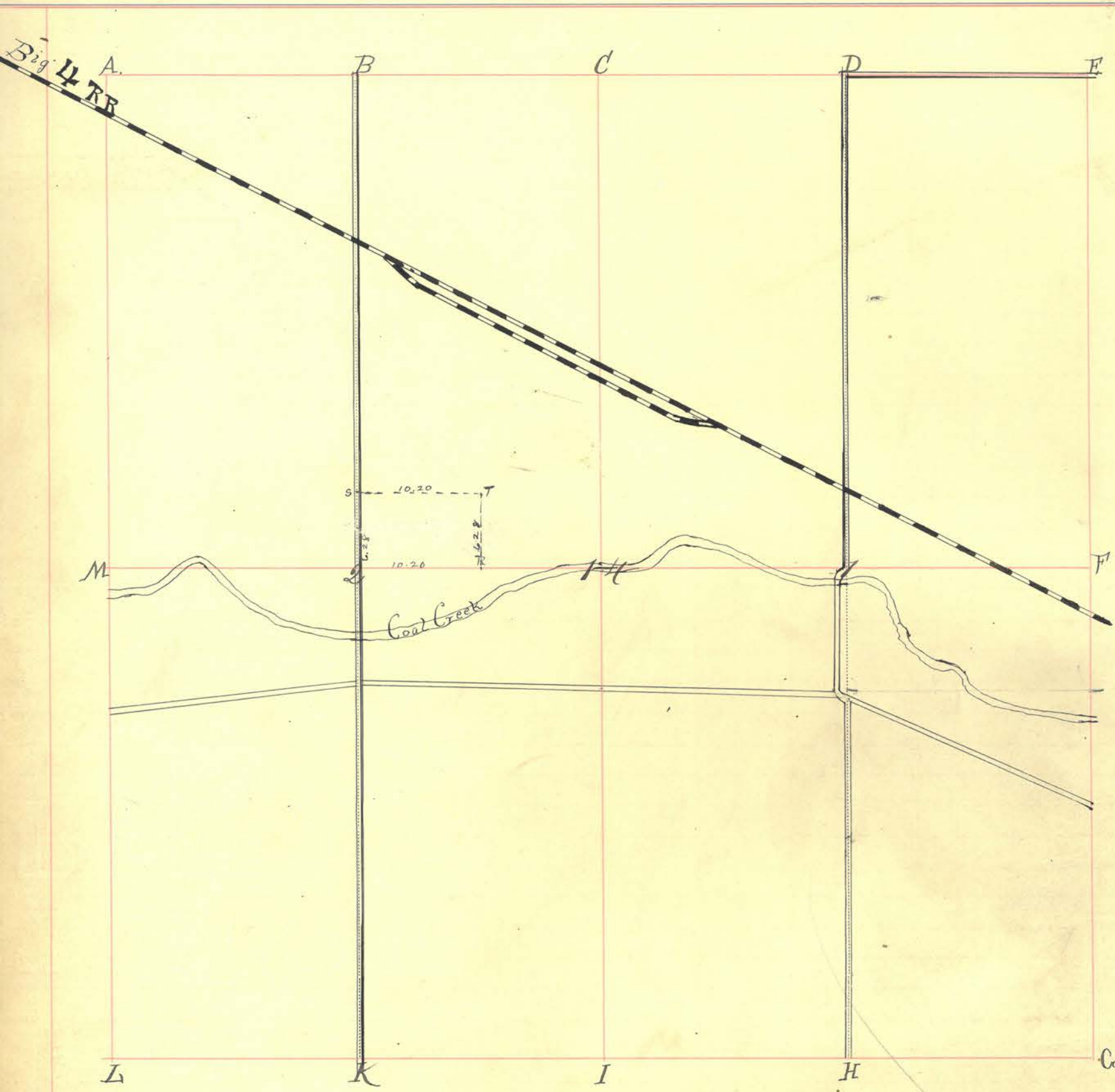
Section 11 Township 19 North, Range 6 West.

INDEX.	CORNERS.	SIZE.	MARKS.	WITNESSES.	SIZE.	DIRECTION.	DISTANCE.	MARKS.
x.	Stone							
y.	Stone.							Back.
z.	Stone.							
<i>1/2 of N.E. q. to James Pearl.</i>								
s	Stone							
T	"			Stone		North	45° E.	41 lks
c	"							
d	"							

Section 13 Township 19 North, Range 6 West.



INDEX.	CORNERS.	SIZE.	MARKS.	WITNESSES.	SIZE.	DIRECTION.	DISTANCE.	MARKS.
A.								
B.				Red Oak. Buck.	36"	S. 68° W	21.	
C.					20"	N. 74° E	20.	
D.								
E.								
F.								
G.	Stone							
H.								
I.	STATE HIGHWAY MONUMENT							
K.				Lugger White Oak.	24"	N. 78° E	12	
L.					22"	N. 82° W	42.	
M.								
13.								
1.				Red Oak. White Oak. Red Oak.	3"	N. 30° W	19.	
2.				Buck.	18"	S. 61° E	42	
					2"	S. 74° W	24.	
						S. 68° W	21.	(Buck)



INDEX.	CORNERS.	SIZE.	MARKS.	WITNESSES.	SIZE.	DIRECTION.	DISTANCE.	MARKS.
A.	Stone							
B.	Stone							
C.	Stone							
D.	Stone							
E.								
F.								
G.								
H.	Stone							
I.								
K.	Stone			Buch. P. Hickory	8" 18"	S. 73° W N. E	65. 75-	
L.	Stone line							
M.	Stone							
14.								
1.	Stone							
2.	Stone							

Section

Township

North, Range

West.

INDEX.	CORNERS.	SIZE.	MARKS.	WITNESSES.	SIZE.	DIRECTION.	DISTANCE.	MARKS.
--------	----------	-------	--------	------------	-------	------------	-----------	--------

R Stone
S Iron pipe
T Iron pin

Oct 16-1901

Due notice having been given by John Went, 10 days prior to Oct 16-1901, to Athlinda Watson and William Wood "etal", I established corners between the said parties lands as follows:-
Beginning at the S.E. cor. of Lot No. 23 in M. Brants 5th addition to the town of Waynetown and running thence N 86 1/2° W 165 feet thence South 12 feet planted granite boulder 12" x 4" x 2"; thence south 195 feet planted lime stone (pointed), said stone being 165 ft N 86 1/2° W from the S.E. cor of Athlinda Watsons tract.

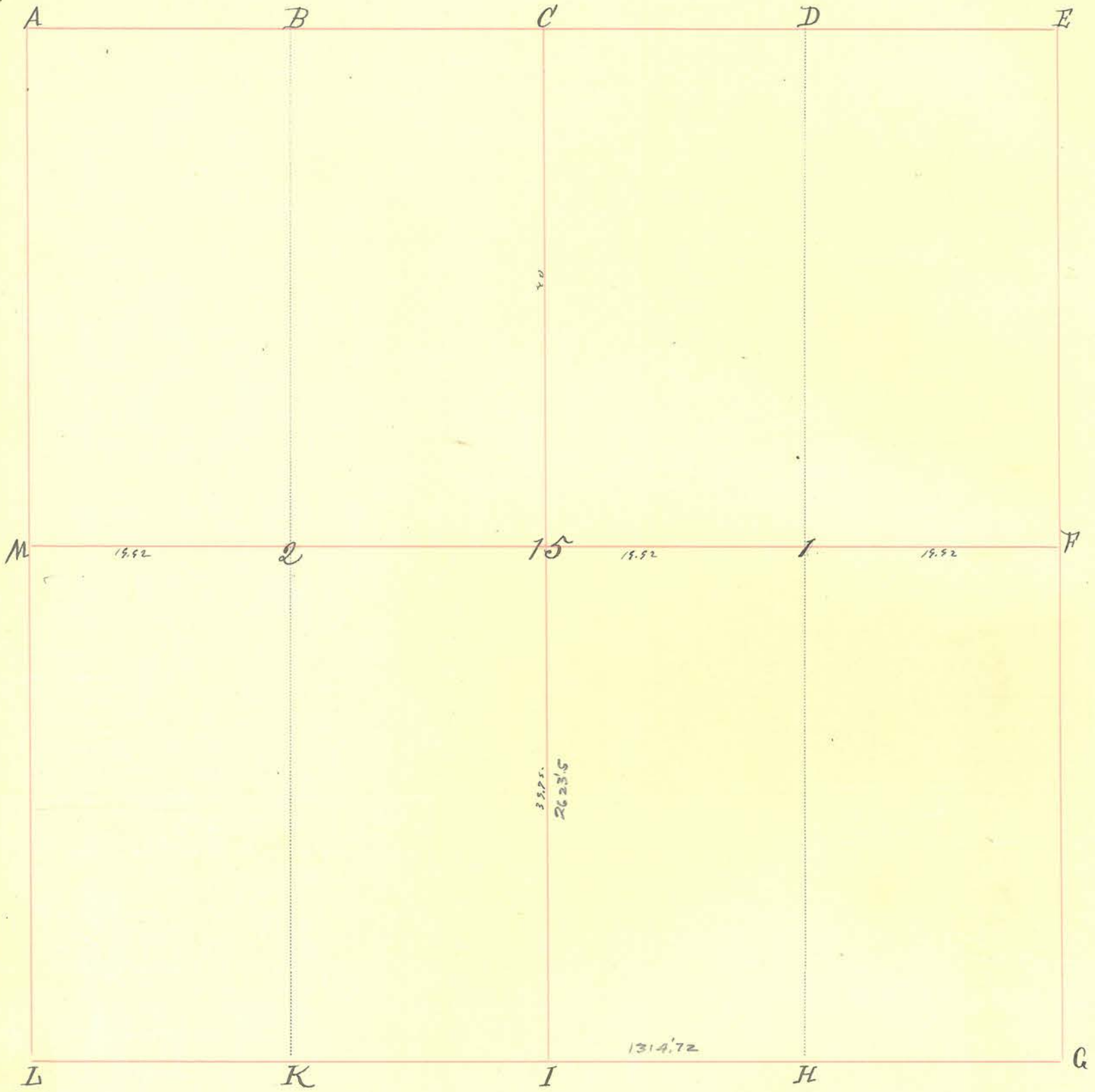
James A. Harding
Surveyor of Montgomery Co.

April 12, 1907.

Made survey of part of the east 1/2 of the S.W. 1/4 of sec 14 Township 19 Range 6 W for W.A. Bannell, Amos Fauts and Thomas Swellen and established the lines between their respective tracts of land. Beginning at a point 10 feet north of the N.W. corner of lot No 1 in Edwards' third addition to the town of Waynetown thence east 187.5 feet and drove stake marking line between Fauts and Bannell thence east 236.7 feet and drove stake marking west line of Swellens tract. All interested parties present. Mr. Swellen objected to survey claiming, according to his deed his tract extended 20 feet west of last stake established.

Wm Smith }
Milton Nees } Chairman.

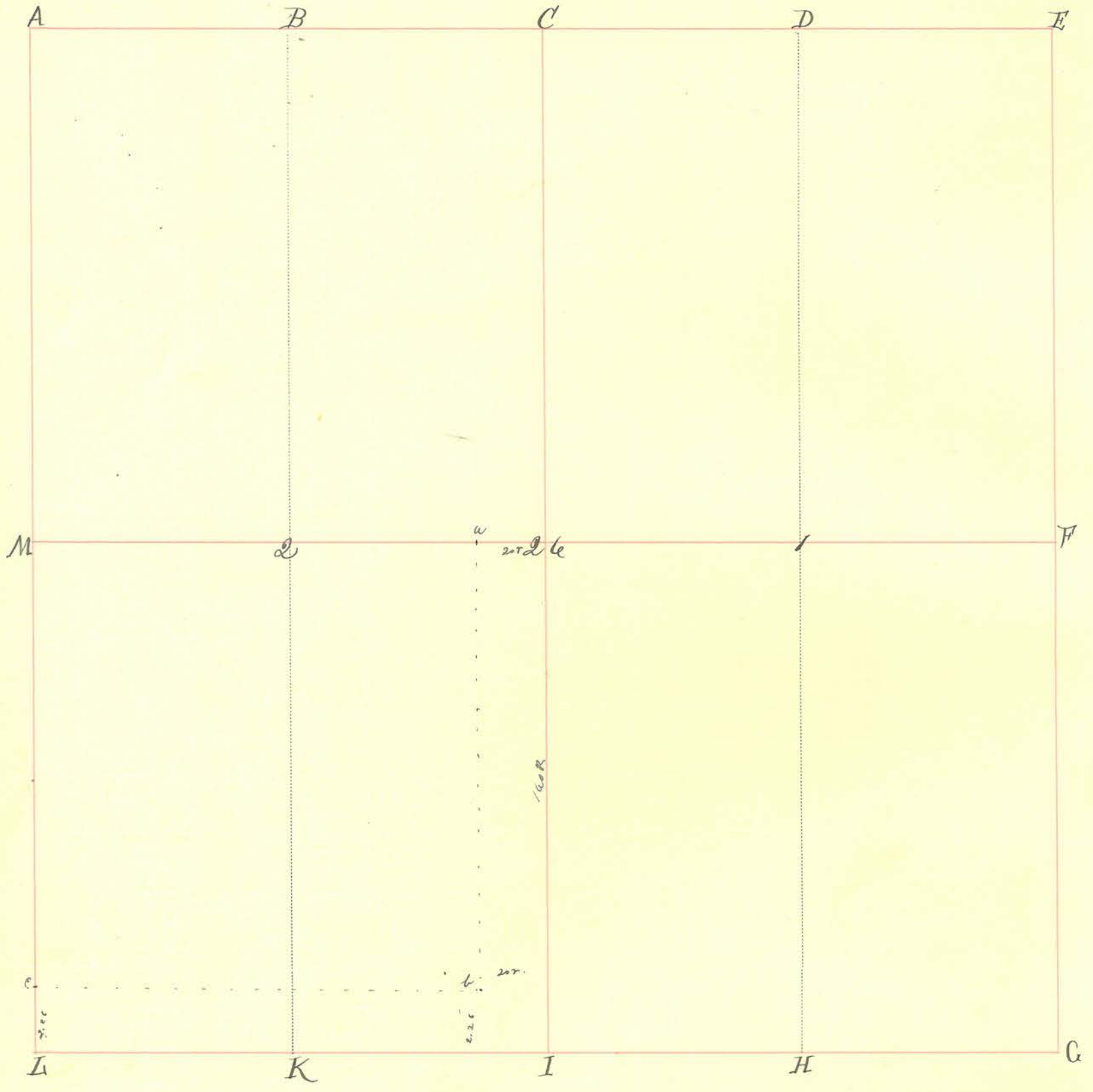
Milton F Nees
S.M.C.



INDEX.	CORNERS.	SIZE.	MARKS.	WITNESSES.	SIZE.	DIRECTION.	DISTANCE.	MARKS.
A.								
B.								
C.								
D.								
E.								
F.								
G.								
H.								
I.								
K.								
L.								
M.								
15.								
1.								
2.								
				Ash. Hickory White Walnut " " " " " " No. Ash. Sugar. Walnut " "	8" - 10" 12" 12" 12" 8" 2"	N. 60° W N. 70° E S. - W S. 75° W N. 60° E S. 33° W S. 40° E N. 6° W	24. 24. 14 24. 21. 21. 14. 24.	(Buck. 85)

INDEX.	CORNERS.	SIZE.	MARKS.	WITNESSES.	SIZE.	DIRECTION.	DISTANCE.	MARKS.
a.				Elm.	10"	N 60 $\frac{1}{2}$ E	68 $\frac{1}{2}$	
b.				White Oak.	20"	N 30° W	20	
v.				Ash.	8"	S 1 $\frac{1}{4}$ W	6 $\frac{1}{2}$	
w.				Sugar Corner.	30"			
x.								
y.	Stone.							Buck. 85
z.				Grb. Hickory	36	S 18 $\frac{1}{2}$ W N. 85° E	11. 54.	
				N $\frac{1}{2}$ of N. W. qr for H. Brant. S $\frac{1}{2}$ for Stephen Parker.				

Section 26 Township 19 North, Range 6 West.




INDEX.	CORNERS.	SIZE.	MARKS.	WITNESSES.	SIZE.	DIRECTION.	DISTANCE.	MARKS.
A.								
B.	Stone in Road.							
C.								
D.								
E.								
F.								
G.								
H.								
I.								
K.				Beech Sugar.	12" 18"	N. 34° E S. 77° E	20. 36.	
L.								
M.								
26.				Black Walnut. Hawberry.	20" 10"	S. 22° W N. 17° E	9. 32.	
1.								
2.	Stone.			Beech. Lynn.	18" 20"	N. 31° W N. 34° E	142 21.	

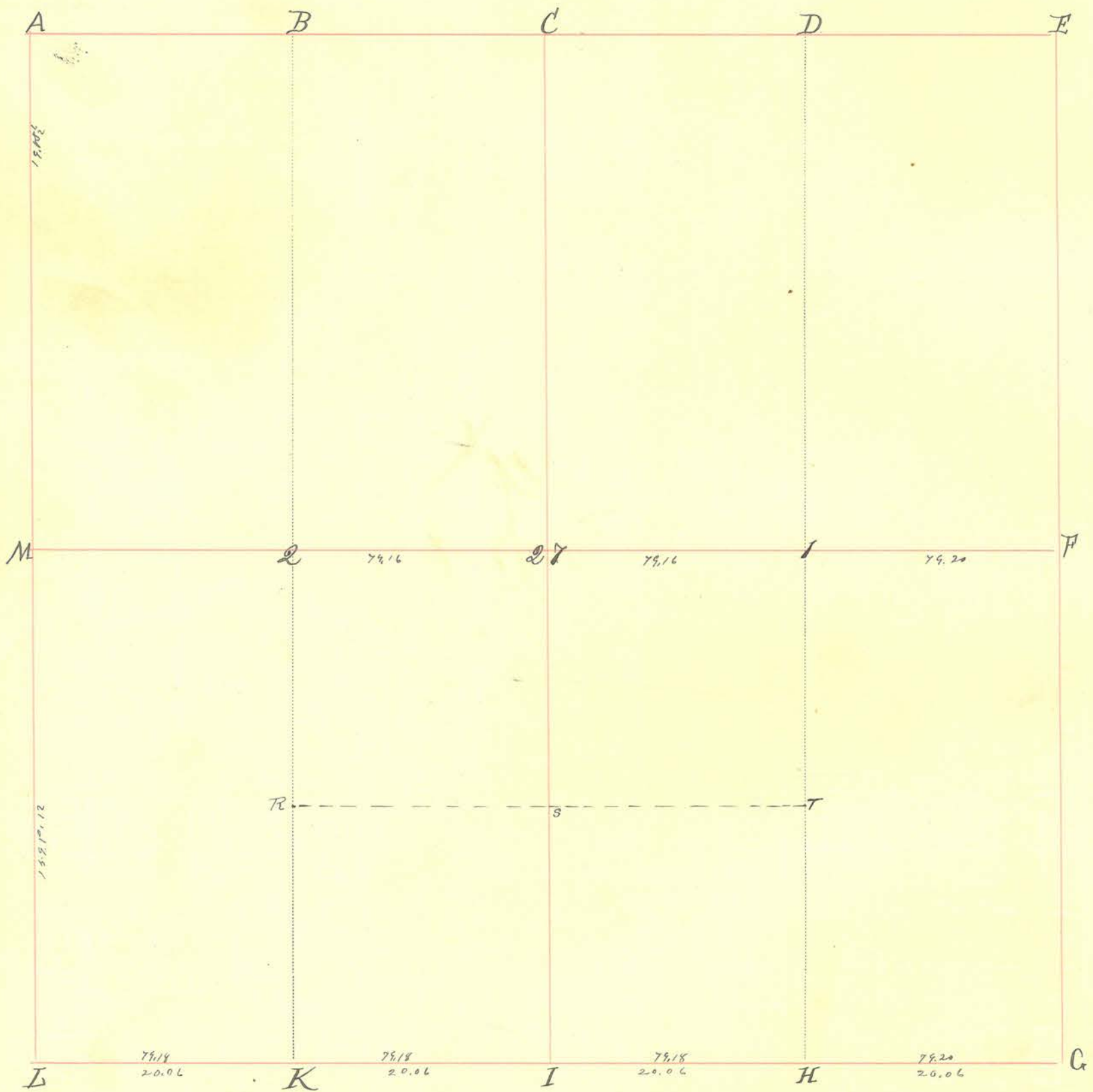
INDEX.	CORNERS.	SIZE.	MARKS.	WITNESSES.	SIZE.	DIRECTION.	DISTANCE.	MARKS.
6.	Stone							
7.	Stone							
a.				B. Walnut	4"	N. 79° W	137 1/2	Ira McClelland April 24th/57
b.	Stone			Willow	6"	S 40 E	25 1/2	
c.				S. Maple	30"	N. 45° W	80"	
				Beech	8"	S. 82° E	13 1/2	

November 4th 1831.

W. Pr. gr for Wm Newland. S.E. gr for Henry Donahue
 E. 1/2 of S.E. gr for Jesse Thomas. Plat filed.

L. Anderson (S.D.)

 Vide: "Old Record"



INDEX.	CORNERS.	SIZE.	MARKS.	WITNESSES.	SIZE.	DIRECTION.	DISTANCE.	MARKS.
A.								
B.								
C.	Stone			Center of road				
D.								
E.								
F.	Stone.							
G.								
H.	Stone							
I.	Stone	very Large						
K.								
L.	Stone							
M.	Stone?							
27.	Stone	set by Buckle witnesses 11-18-1898		Red Oak. Oak.	16" 12"	S. 26 1/2 E N. 39 1/2 W	30. 43.	(Back.)
1.	Stone							
2.	Stone							

Section

Township

North, Range

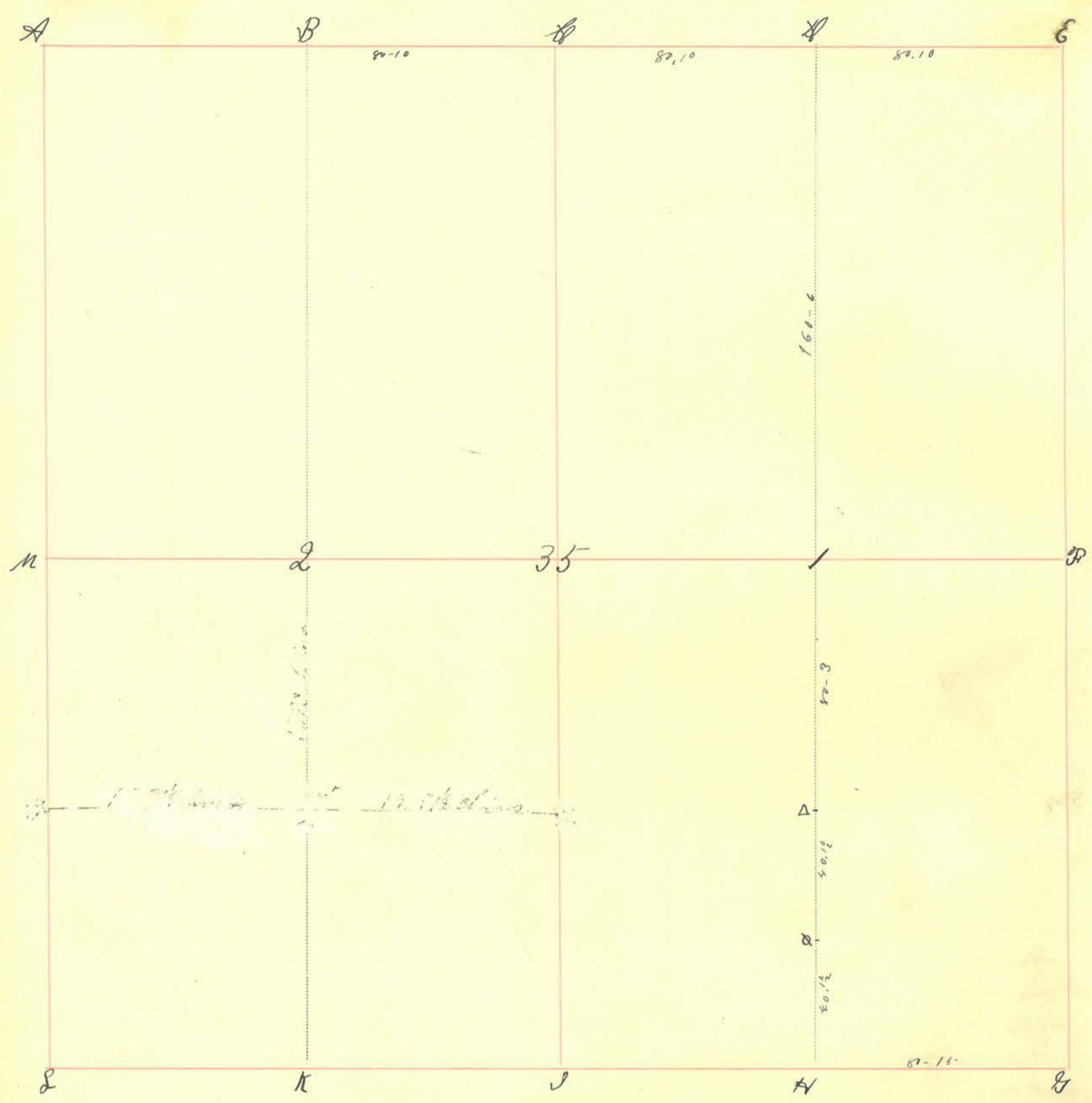
West.

INDEX.	CORNERS.	SIZE.	MARKS.	WITNESSES.	SIZE.	DIRECTION.	DISTANCE.	MARKS.
R	Stow			B Walnut	10	N 73 E	24	Buck
S	Stake			ash	8	N 86 E	7	
T	Staw			ash	8	N 82 1/2 W	9	Buck

February 15, 1899.

Due notice having been given By Mrs. Louise Williams, corners were established at C + 27

James A. Harding
Co Surveyor



INDEX.	CORNERS.	SIZE.	MARKS.	WITNESSES.	SIZE.	DIRECTION.	DISTANCE.	MARKS.
1.	stone							
2.	"							
3.	"							
A.								
B.								
C.								
D.				Maple Ash.	24" 14"	N 29° E N. 66° E	80. 146.	
E.								
F.								
G.								
H.								
I.				B. Ash. Ash.	16" 12"	N. 38° W S. 55° W	85. 79.	
K.								
L.								
M.								
35.	Limestone	16"x6"x4"						
1.	Granite			Granite		W.	40	
2.	Granite	18" long						

INDEX. CORNERS. SIZE. MARKS. WITNESSES. SIZE. DIRECTION. DISTANCE. MARKS.

~~State of Indiana }
County of Montgomery }~~ ^{SS}

~~Survey in the South West quarter of section 35 Township Twenty
North Range Six West for William Westfall and
Stephen E. Kempf~~

~~for the purpose of establishing the South-east corner of the North-west quarter of the
South-west quarter of said section 35 same township and range last of said
and the East line of said quarter of quarter section, the same being the
corner and line in controversy between said William Westfall and said
Stephen E. Kempf, — The land owners adjoining said corner and line having been duly notified ten~~

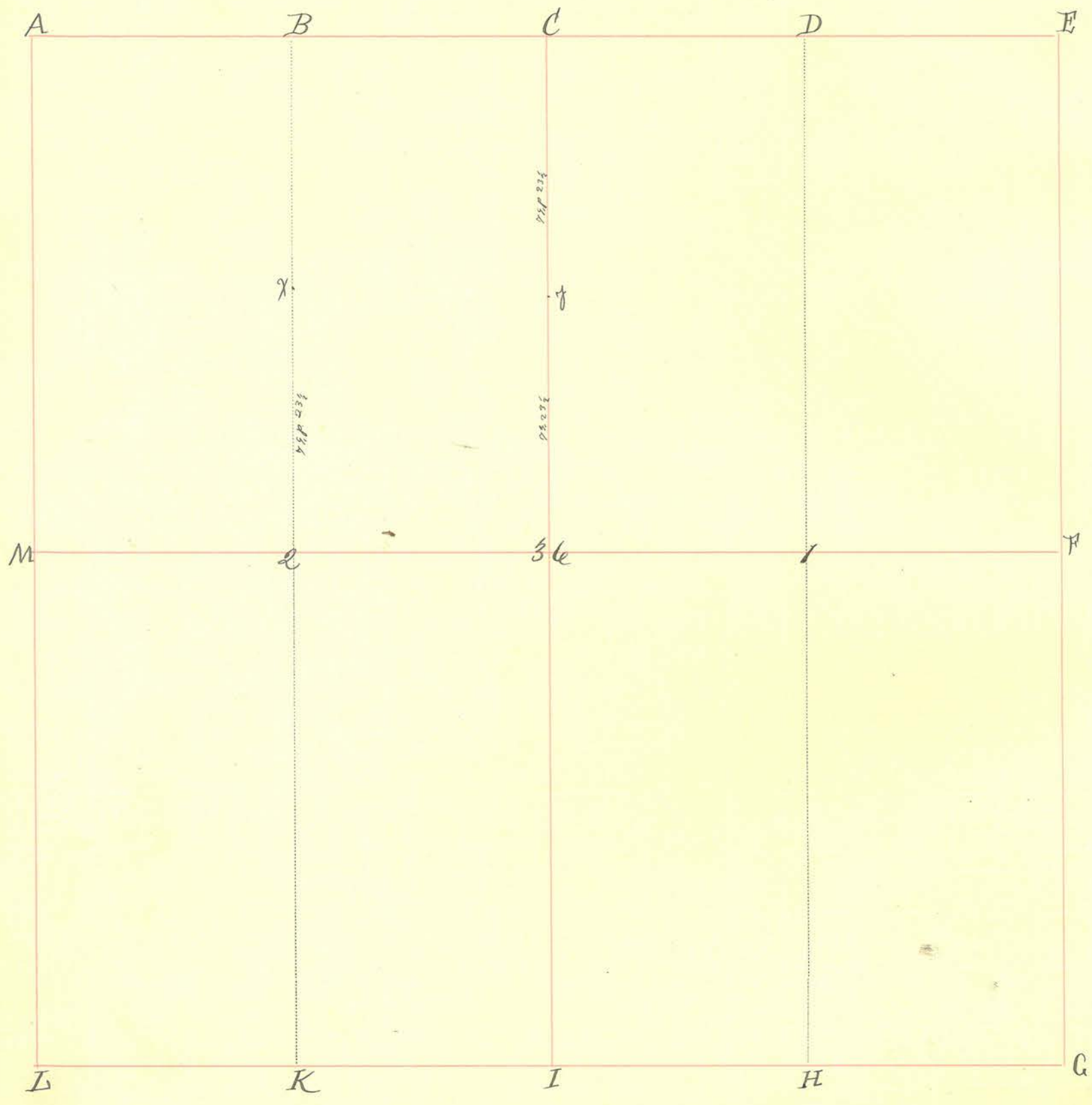
~~days previous thereto, — On the 28th day of March 1872, with James H. Rivers and
Ernest A. Cunningham as chairmen both duly sworn, I established
the corner at Z as per foregoing plat by setting a black granite stone at~~

~~Z granite 24" x 12" x 10" — no bearing trees near
and ran the line Z setting a stake each 20 rods from Z to Z.
William F. Hunt Surveyor M. Co. Indiana.~~

Q.
A.

Jack Oak.
Glickors
Glickors.
Ash.

18"	N. 74° E.	61.
10"	N. 86° E.	63.
20"	N. 79° E.	94.
10"	S. 76° E.	97.



INDEX.	CORNERS.	SIZE.	MARKS.	WITNESSES.	SIZE.	DIRECTION.	DISTANCE.	MARKS.
A.								
B.				Buch.	12"	S. 62° E	4 1/2	
C.				White Oak.	40"	S. 2° W	59 1/2	
D.				Buch.	12"	N. 6 1/2° E	24.	
E.				Buckeye.	16"	N. 87° W	17.	
F.								
G.								
H.								
I.								
K.								
L.								
M.								
36.	Stone.							
1.								
2.								

B. Oak. 50" S. 27 1/2° E 56.

Sugar. 11" N. 5 1/2° E 67 1/2
 " " 8" N. 28 1/2° E 58 1/2

B. Oak. 30" N. 65° E 61.
 Buckeye 12" S. 8 1/2° E 26.
 B. Walnut 1" N. 12° W 60 1/2
 Buch. 16" S. 14 1/2° E 4 1/2
 " " 20" S. 77° W 45 1/2
 S. Oak. 33" N. 26 1/2° E 38.
 B. Hickory 14" N. 41° W 34.

INDEX.	CORNERS.	SIZE.	MARKS.	WITNESSES.	SIZE.	DIRECTION.	DISTANCE.	MARKS.
<p>x. y.</p>	<p>Stones, Stone.</p>			<p>Ash</p>	<p>18"</p>	<p>N. 18° E</p>	<p>8.</p>	

State of Indiana, }
Montgomery County, } SS:-

I hereby certify that I have made a survey of a certain tract of land situate in Montgomery County, Indiana, and heretofore described in certain Deeds of Conveyance of record on the records of said County substantially as follows:-

Part of the west half ($\frac{1}{2}$) of the north east quarter ($\frac{1}{4}$) of section ten (10), township twenty (20) north, range six (6) west, bounded as follows:- Beginning in the county road at the north west corner of John Coon's land, running thence north twenty (20) poles to a stake; thence east forty (40) poles to Hugh Meharry's land; thence south twenty (20) poles; thence west forty (40) poles to the place of beginning -

and that such survey shows the correct description of said tract of land to be as follows:-

Part of the west half ($\frac{1}{2}$) of the north east quarter ($\frac{1}{4}$) of section ten (10), township twenty (20) north, range six (6) west, described as follows;- to-wit:- Beginning at a point eight and fifty-five hundredths (8.55) chains north of the south west corner of said west half ($\frac{1}{2}$) of said quarter ($\frac{1}{4}$) section, and running thence north five (5) chains; thence east ten (10) chains; thence south five (5) chains; thence west ten (10) chains to the place of beginning, containing five (5) acres, more or less.

Surveyed, April 29, 1932.

William S. Harding }
I. N. Larrick } Chainmen.

Surveyor of Montgomery County, Indiana.

-:-:-:-

OFFICE OF
WILLIAM S. HARDING
SURVEYOR MONTGOMERY
COUNTY

CRAWFORDSVILLE, IND..

[Faint handwritten notes and scribbles, including the word "Crawfordsville" and various illegible characters.]

A part of the west half ($\frac{1}{2}$) of the northeast quarter ($\frac{1}{4}$) of section ten (10), township twenty (20) north, range six (6) west, described as follows :-

Beginning at a point 8.55 chains north of the southwest corner of said west half, and running thence north 5.00 chains to a point, thence east 10.0 chains to a point, thence south 5.00 chains to ~~the south line of said quarter~~ ^{a point}, thence west 10 chains to the place of beginning, containing 5 acres.

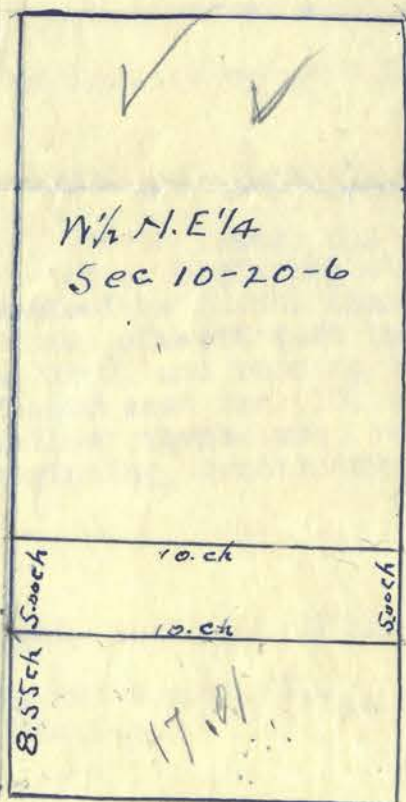
Surveyed April 29th 1932.

William S. Harding)
I.N. Larrick) chainmen.

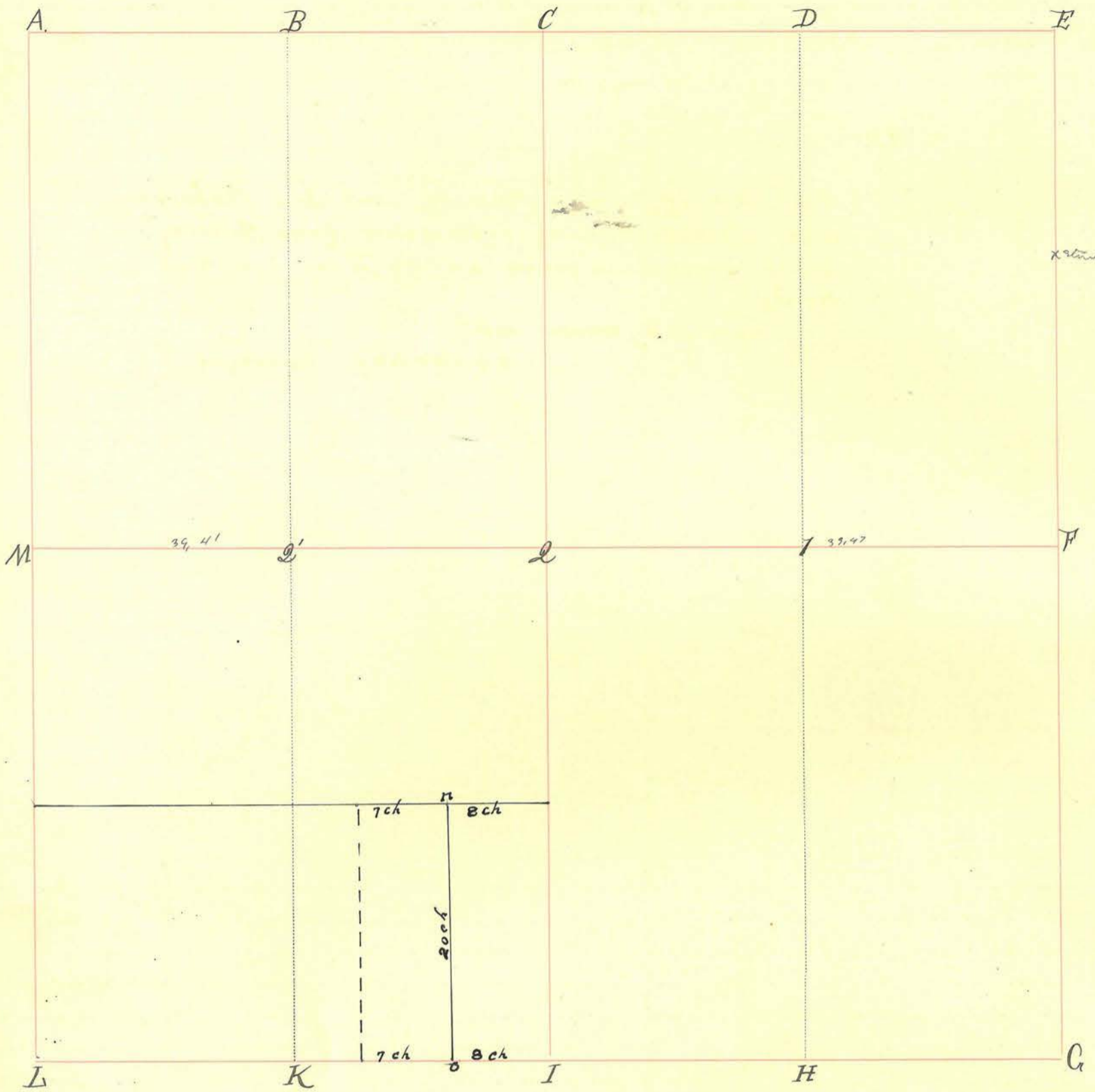
William S. Harding
Surveyor Montgomery County Indiana

Surveyor's fee \$ 5.00
Helper 2.00
Mileage 1.80

\$ 8.80



5.00
5.00
10.00
17.01
5.00
83.01 acres
94 rods 5 inches
80-
21 70/100 2 73 60/100
11 30
100 10
✓



INDEX.	CORNERS.	SIZE.	MARKS.	WITNESSES.	SIZE.	DIRECTION.	DISTANCE.	MARKS.
A.				Sugar	18"	N. 77° W	15.	
B.				Duckwing		S. 14° W	33.	
C.								
D.								
E.				Maple.	10"	S. 36° E	48.	
F.				Sugar.	36"	S. 34° W	18.	
G.	Stone			Ash.	12"	S. 68° W	7.	
H.				" "	4"	N. 40° E	48.	
I.				elm.	18"	S. 47° E	34.	
J.				Maple.	15"	N. 60° W	23.	
K.								
L.	Stone			Sugar.	12"	S. 11° W	23.	
M.				" "	8"	N. 60° E	22.	
N.								
O.				Becky	4"	S. 70° E	12.	
P.				Coffin nail	2"	N. 50° W	6.	
Q.				Ash.	12"	S. 82° E	31.	

"vide 'Old Record'"

INDEX.	CORNERS.	SIZE.	MARKS.	WITNESSES.	SIZE.	DIRECTION.	DISTANCE.	MARKS.
--------	----------	-------	--------	------------	-------	------------	-----------	--------

n	Stone							
o	Stone							

Set South of road to mark E & W line but not N & S line

April 12th 1923

Abe Meharry, Vinton Meharry, and Jud Meharry
and Ephriam ^{Martin} Meharry representing Anna Meharry
being present. I made survey ^{and} set stones at
N-O.

Sam J. Symmes asst-

H. S. Starding Surveyor

INDEX.	CORNERS.	SIZE.	MARKS.	WITNESSES.	SIZE.	DIRECTION.	DISTANCE.	MARKS.
X.	Stone with other stones & piece of broken tile underneath.							
Y.	Stone							
Z.	Stone		" + "					

Survey October 14th & 15th 1887. For Hutton, W.M. Alex. McHenry and Samuel Kerr. All parties present consented.

Course to M. 2° 05'. T-C. 4° 14'. X-Z 2° 05'

Due notice having been given to M.W. Hutton et al., 10 days prior to November 30th 1903 I did, on that day and the following day establish the line between the North half and South half of the Northwest quarter of section Three (3) Township Twenty (20) North, Range Six (6) West, William Harding and myself acting as chain carriers, and Eli Gelpie, M.W. Hutton and others interested being present. I found the distance from A. to M., said section, to be 78.03 ch.; From A. to E. 79.23 ch.; From C. to I., 79.09 1/2 ch. From L. to I., 39.416 ch. All established corners, marked by stones. I then established the South west corner of the North Half of the North West Quarter of said section by stones as follows:

X'	Stone +	4" x 6" x 12"	+	Stone	4" x 4"	N. 46° E.	35 1/2 l.	
					4" x 4"	S. 45° E.	38 1/2 l.	

placing stone X' 19.52 1/4 ch. S of NW cor. sd. sec., which stone X' is 16 1/4 l. S of true SW cor. sd. N 1/4 NW 1/4.

I then established the Southeast corner of the North half of said North west qv. as follows: Stone Z'

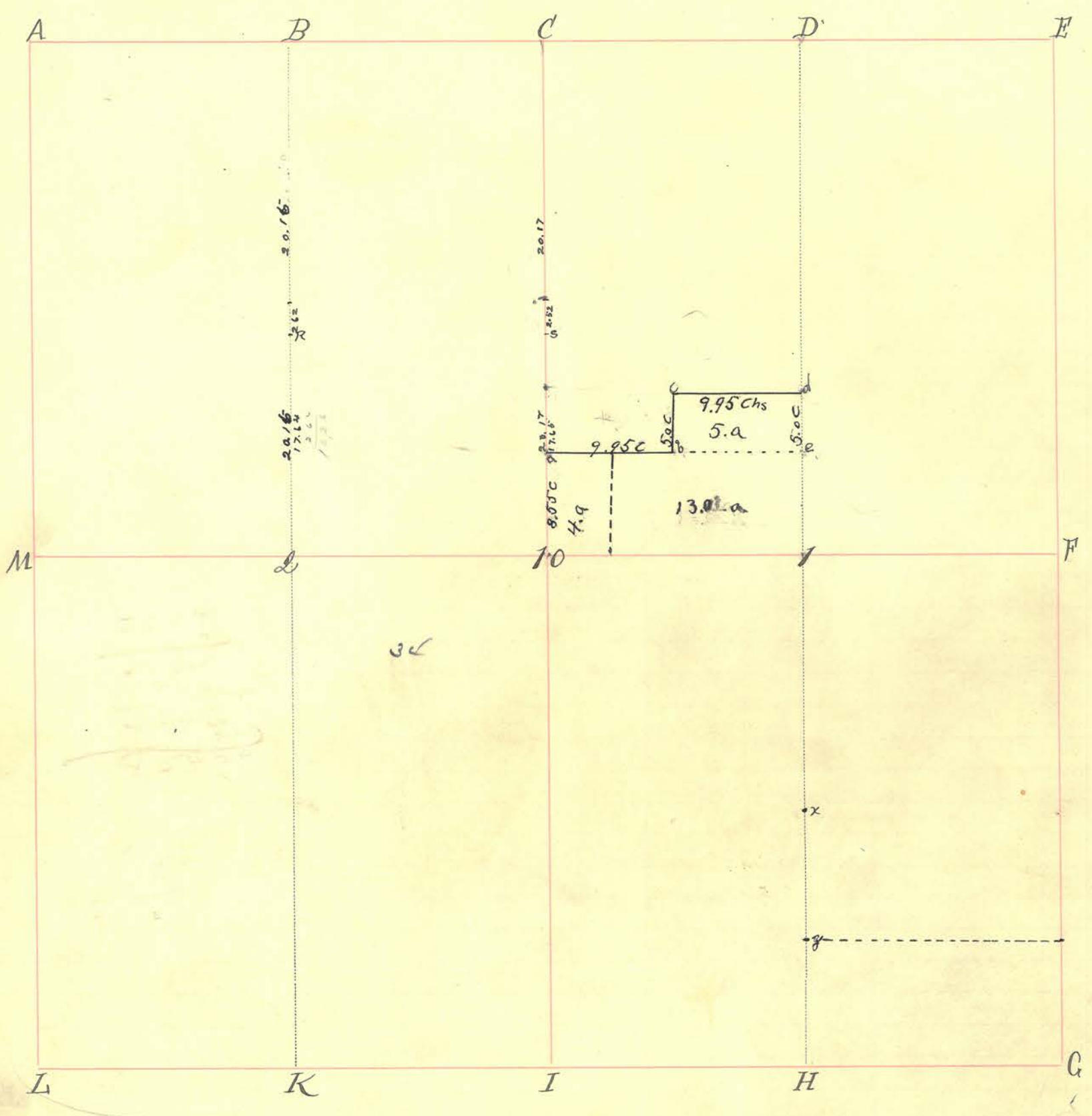
Z'	Stone	4" x 6"	-	stone	4" x 4"	N.	50 l.	-
				stone	4" x 4"	W.	50 l.	-

placing stone Z' 19.77 1/4 ch. S. of and 39.61 1/8 E. of N.W. cor. sd. qv. section, which stone Z' is 11.00 links South of the true S.E. cor. of said N 1/4 of said NW 1/4. To the placing of which stones M.W. Hutton aforesaid, being present objected, stating as the grounds for such objection that the South line of said North half had heretofore been established by a former survey, and stating no other grounds of objection.

Dec. 3rd 1903.

Deputy Surveyor, Mont. Co., Ind.

Note: - The above survey makes the true area of N 1/4 NW 1/4 3-20-6. 77.355 A.
 " " " " " " " " " S 2 " " " 77.907 "



INDEX.	CORNERS.	SIZE.	MARKS.	WITNESSES.	SIZE.	DIRECTION.	DISTANCE.	MARKS.
A.	Stone							
B.	Stone							
C.	Stone							
D.								
E.	Stone							
F.								
G.	Stone							
H.	Stone							
I.	Stone							
K.								
L.								
M.								
10.	Stone							
1.	Stone							
2.	Stone							
x	Stone							

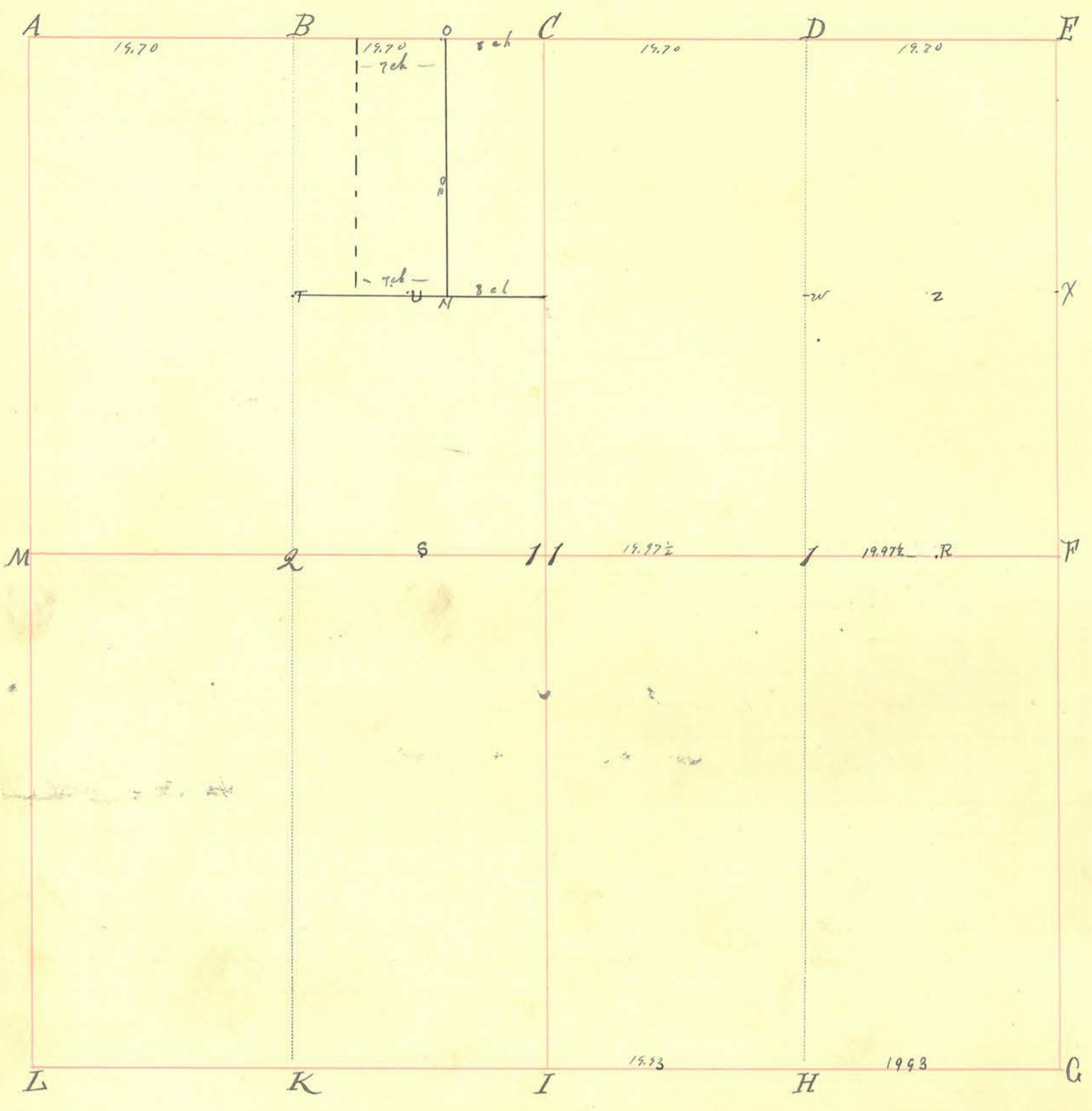
Section

Township

North, Range

West.

INDEX.	CORNERS.	SIZE.	MARKS.	WITNESSES.	SIZE.	DIRECTION.	DISTANCE.	MARKS.
g	stone			Wild Cherry	10	S 1/4 E	22	
R	stone							
S	stone							
<p>April 10th 1905.</p> <p>Due notice having been given to the interested parties I made the following survey.</p> <p>H.C. McQuinn. Depty Co. Surd.</p> <p>W.S. Harding. Chairman</p>								
a	stone		centre					
b	stone		"	02' N of Cor.				
c	stone		"	02' S of Cor.				
d	stone		"	02' S of Cor.				
e	stone		"					



INDEX.	CORNERS.	SIZE	MARKS.	WITNESSES.	SIZE.	DIRECTION.	DISTANCE.	MARKS.
A.	Stone							
B.								
C.								
D.								
E.								
F.	Stone		+	Stone		North	25 lks	T
G.	Stone							
H.	Stone		+	Stone		N 86 1/2 E	2 1/2	+
I.	Stone					S 87 1/2 W	93 1/2	+
K.	Stone							
L.	Stone							
M.								
N.	Stone			Stone		E	2 1/2	+
O.	Stone			Stone		S 6 1/2 W	52 1/2	W
P.	Stone			Stone		S 81 W	25	+
Q.	Stone planted by Crawford.					East	25	T
X.	Stone.							

Section

Township

North, Range

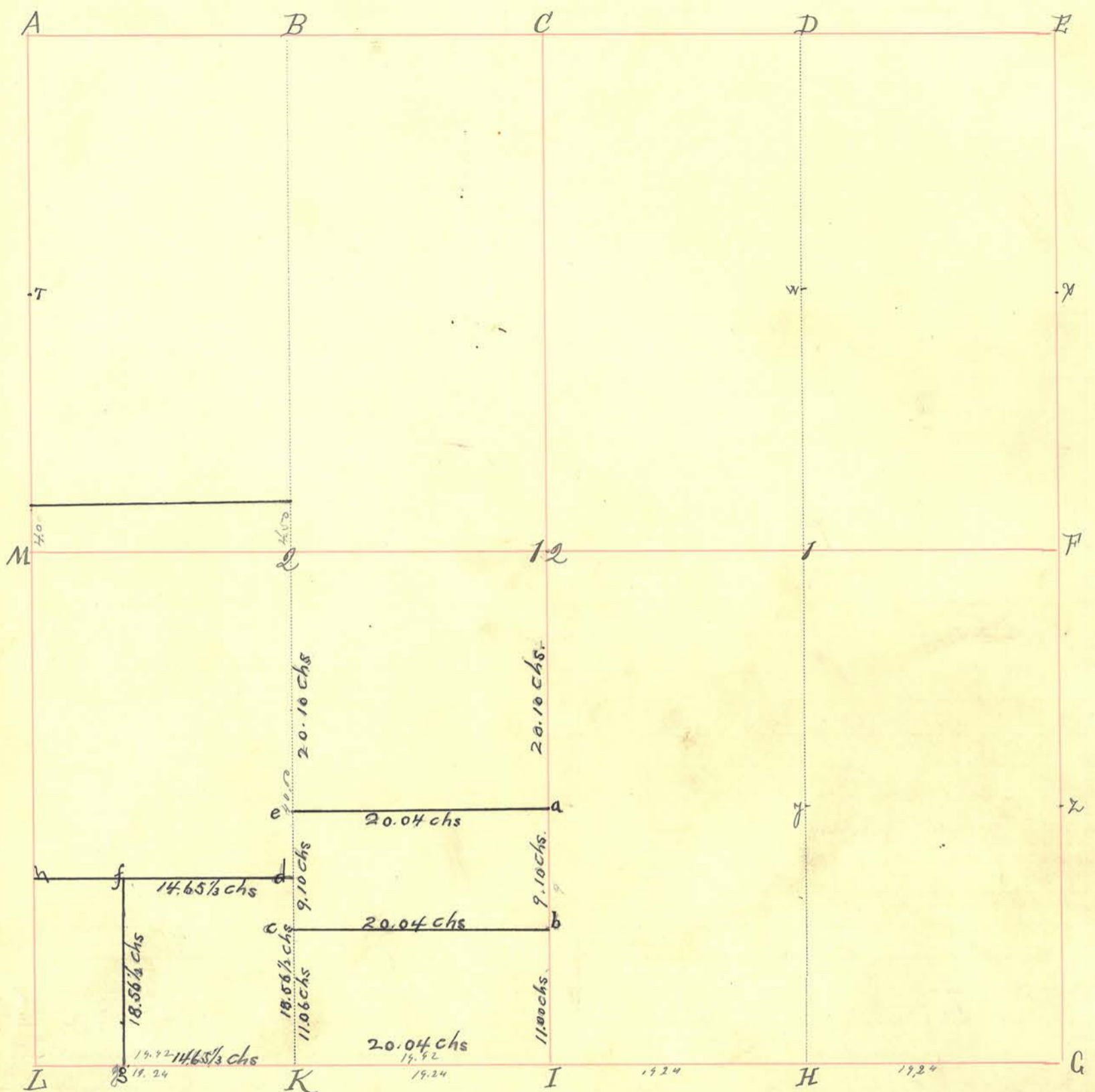
West.

INDEX.	CORNERS.	SIZE.	MARKS.	WITNESSES.	SIZE.	DIRECTION.	DISTANCE.	MARKS.	
T	Stone			Thorn tree about 10' E of					
W	Stone			Thorn hedge	6	West	7 7/8 lks		
2-8 ² 9-1897									
Due notice having been given by Rachel Beach corners were established at									
	I, H, S, U, Z, F, R								
R	Stone		+	Stone		N 6 W	25-	+	
S	Stone		T	Stone		W	25-	+	
U	Stone			Stone		E	25-	+	
Z	Stone		+	Stone		W	25-	+	
				Stone 25 lks S of true corner, corner in ditch					
				Stone		E	25-	+	
				Stone		W	25-	+	
<i>Harvey E. Myrick</i> S.M.C.									

O Stone Set on N bank open ditch
 N Stone Set on north bank of open ditch
 April 12th 1923-

Abraham McHenry, Victor McHenry and Fred McHenry,
 and Ephraim Miller Martin representing Anna McHenry,
 being present I made survey and set stones at O-N.

Sam D. Myers - asst
 William A. Harding Surveyor



INDEX.	CORNERS.	SIZE.	MARKS.	WITNESSES.	SIZE.	DIRECTION.	DISTANCE.	MARKS.
A.								
B.								
C.								
D.								
E.								
F.								
G.	Stone.				6"	N. 64° E (R)	20 1/2	
H.	Stone.			John C. Clark. Glickberg.	12"	S. 18 1/2° W	20 1/2	
I.	Stone.							
K.	Stone							
L.	Stone.							
M.								
12.								
1.								
2.	Stone							

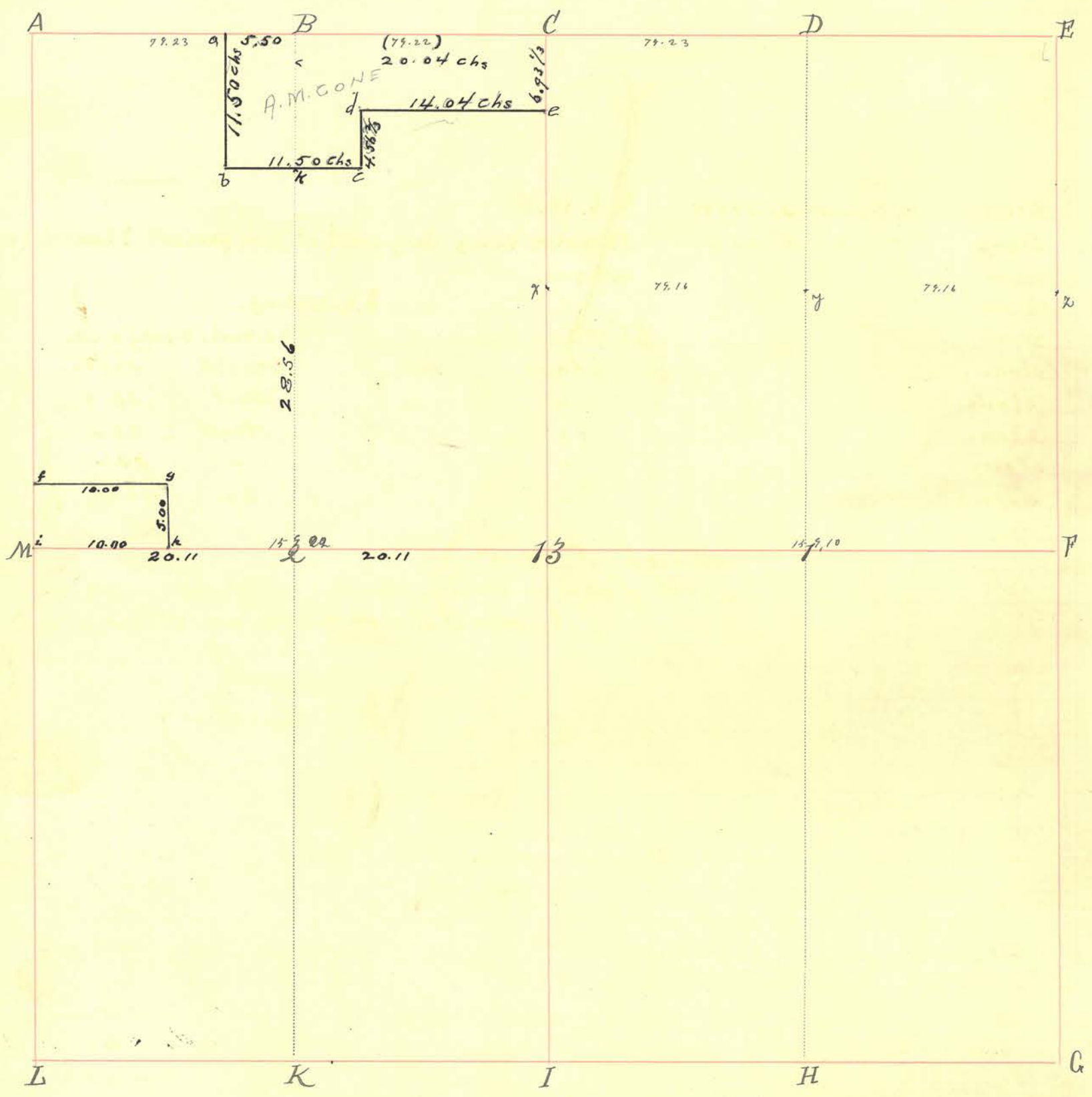
INDEX.	CORNERS.	SIZE.	MARKS.	WITNESSES.	SIZE.	DIRECTION.	DISTANCE.	MARKS.
--------	----------	-------	--------	------------	-------	------------	-----------	--------

W. Stone
 X. Stone.
 y. Stone.
 z. Stone.
 T Stone

March 5th 1905.
 Due notice having been given by J. P. Thomas, I established corner at 12.
 H. G. McGluer } chainmen.
 J. A. Harding.
 Surv. Montg. Co.

March 5th 1905.
 All parties being present I established corners at a. b. c. d. e. and f.
 H. G. McGluer } Chainmen.
 J. A. Harding.
 Surv. Montg. Co.

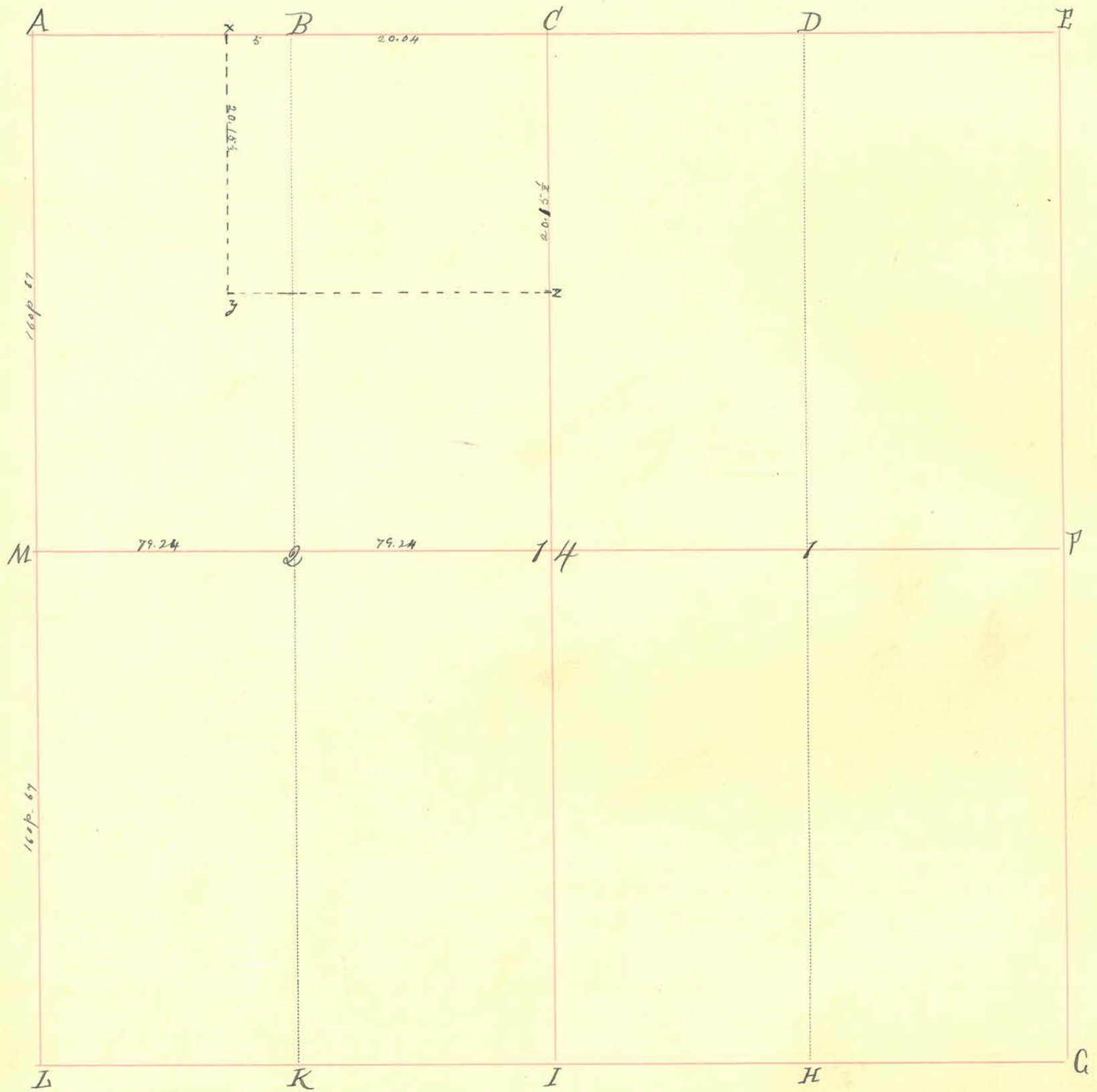
a	stone		stone		West	25 lks
b.	stone		stone		West	15 lks
c	stone		stone		East	20 lks
d	stone		Reference each other.			
e	stone					
f	stone		stone		East	27 lks
g	stone		stone		North	20 lks
h	stone		stone		North	25 lks



INDEX.	CORNERS.	SIZE.	MARKS.	WITNESSES.	SIZE.	DIRECTION.	DISTANCE.	MARKS.
A.	Stone.							
B.	Stone							
C.	Stone.							
D.				White Oak.	6"	N. 63° E	20 3/4	
E.	Stone			Hickory.	12"	S. 19 1/2° W	25 1/2	
F.				Original				
G.				White Oak.	36"	S. 71° E	251.	
H.				" " "	10"	S. 18 1/2° W	237 1/2	
I.								
K.	Stone			Jack Oak.	8"	N. 3 1/2° E	100	
L.				" " "	6"	N. 37 1/2° E	104	
M.	Stone							
13.	Stone			Black Oak.	20"	S. 38° E.	70.	
1.				Jack Oak.	4"	N. 62 1/2° W.	41.	
2.				Hickory.	3"	S. 71 1/2° E.	63 1/4	
				White Oak	1"	S. 2 1/2° W.	48.	
				White Oak.	24"	S. 74 1/2° E.	37	Standing 3-27-95
				" " "	28"	N 21 1/4° W.	78 1/2	Stump left " " "

Section 13 Township 20 North, Range 6 West.

INDEX.	CORNERS.	SIZE.	MARKS.	WITNESSES.	SIZE.	DIRECTION.	DISTANCE.	MARKS.	
x,	Stone?			White Oak.	3"	N. 32° E	16.		
y,	Stone,			Hickory	3"	S. 41° E	74.		
z,	Stone.			Jack Oak.	8"	N. 31° E	26 1/2		
				" " " "	6"	N 52 3/4 W	41 1/2		
				Jack Oak.	4"	S. 78 3/4 E	2 3/4		
				" " " "	4"	N. 15 1/2 E	2 3/4	(Buckles)	
a	stone	mit. stone So 33 lks		3. 5. 1905.					
b	stone	" " E 33 "		All parties being duly notified, and present, I located corners					
c	stone			as shown.					
d	stone								
e	stone			H. G. McCluer, Chainman.		J. A. Harding.			
f	stone			Stone		Co. Surd. Montg'y Co.			
g	stone			"		North 33 lks			
h	stone			"		West 33 "			
i	stone			"		North 33 "			
k	stone			"		" 33 "			
				"		So 33 "			
				<p>March 5th 1915 All parties being duly notified, and all present, I located corners as shown at f. g. h. i.</p>					
				<p>W. S. Harding Deputy Surveyor M. C.</p>					
				<p>March 7th 1915 All parties having been duly notified and all present, I located corners as shown at a. b. k.</p>					
				<p>W. S. Harding, Deputy Surveyor M. C.</p>					



INDEX.	CORNERS.	SIZE.	MARKS.	WITNESSES.	SIZE.	DIRECTION.	DISTANCE.	MARKS.
A.	Stone							
B.	Stone							
C.	Stone							
D.	Stone							
E.	Stone							
F.								
G.								
H.								
I.	Stone		T	Stone 6 1/2 lks West of true corner.				
K.	Stone		+					
L.	Iron Pin			Iron pin South 14 3/4 feet				
M.	Stone							
14.	Stone							
1.								
2.	Stone							
x	Stone		+	Stone Stone		East S 85 W	19 1/2 36	+ +

INDEX.	CORNERS.	SIZE.	MARKS.	WITNESSES.	SIZE.	DIRECTION.	DISTANCE.	MARKS.
--------	----------	-------	--------	------------	-------	------------	-----------	--------

2-26-1897

Due notice having been given by Jacob Fulwider corners were established at x, y, z, and 14

y Stone
z Stone

stone
Stone
stone
Ash

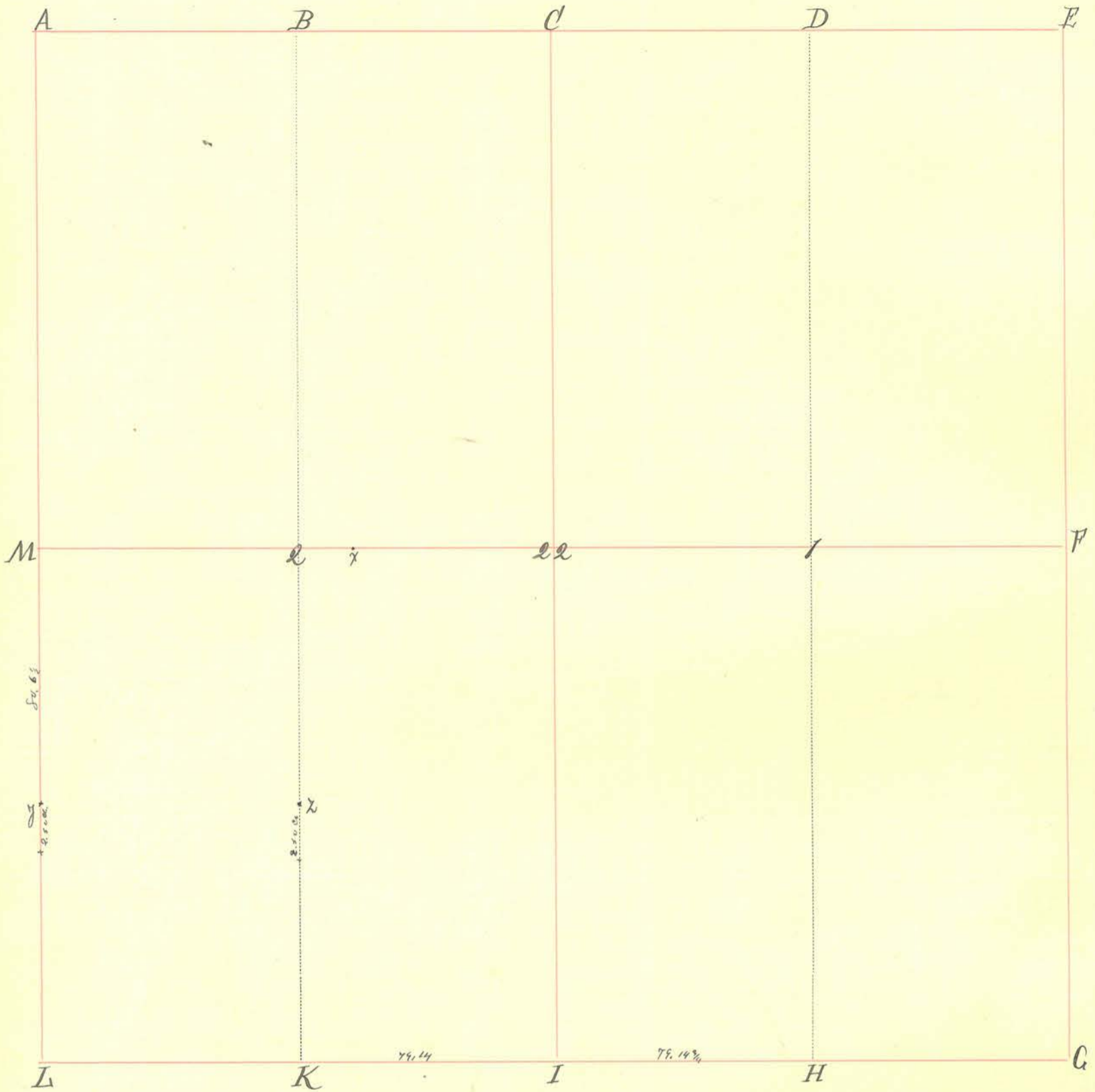
Harvey E Wynkoop, C.S.
North 25'
East 25'
North 152'

10

152.

Section 10 Township 20 North, Range 6 West.

INDEX.	CORNERS.	SIZE.	MARKS.	WITNESSES.	SIZE.	DIRECTION.	DISTANCE.	MARKS.
x. y.	Stone. Stone.		Feb 21-1895	A dividing line from (2) to (7) for Jasper Beadle, John Winger & Theodore Hixon and Geo W. Kern				Harry E Wynkoop Surveyor M.C.



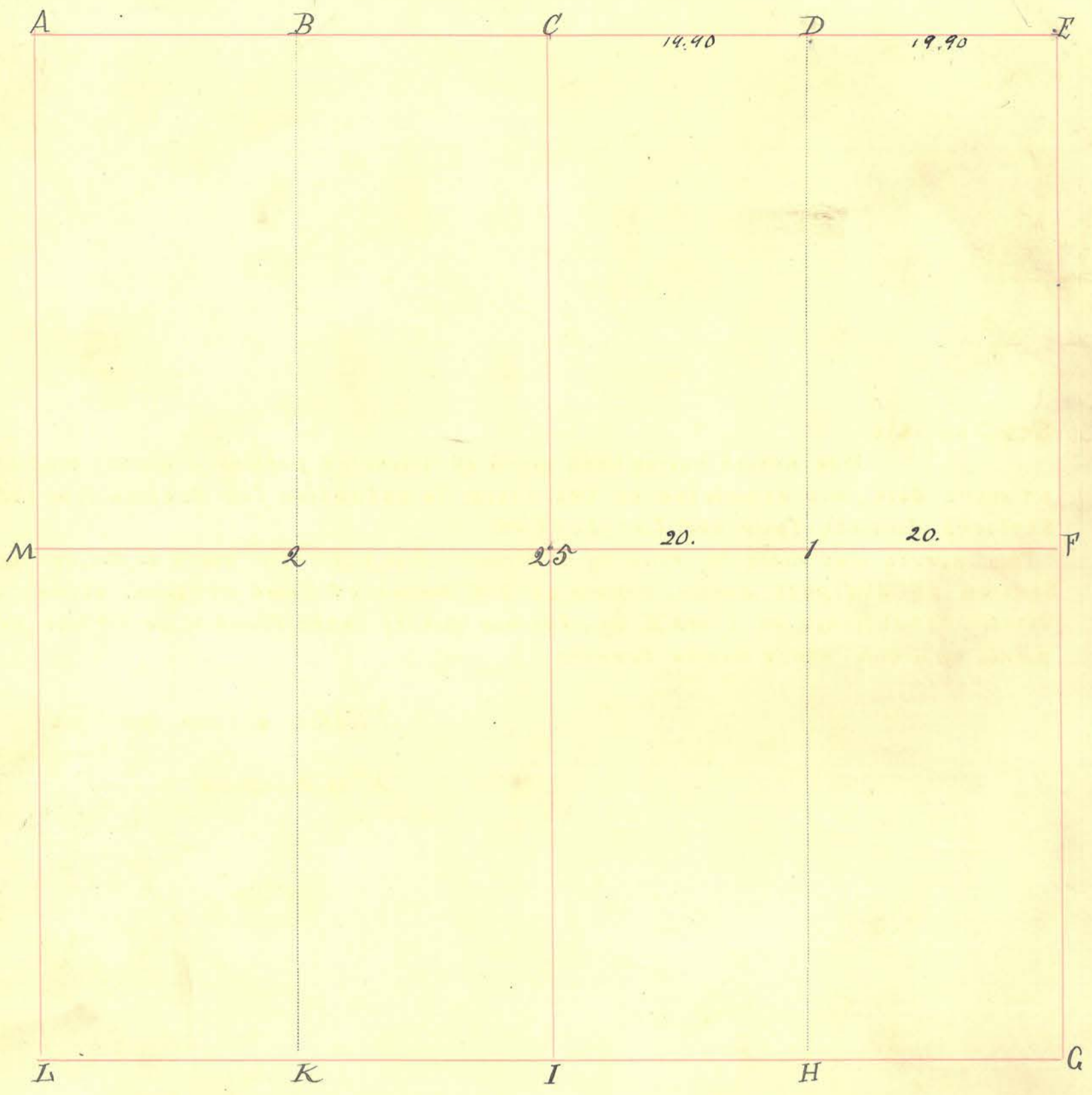
INDEX.	CORNERS.	SIZE.	MARKS.	WITNESSES.	SIZE.	DIRECTION.	DISTANCE.	MARKS.
A.								
B.				Black Oak	20"	N 91° E	36	
C.				" " " "	18"	N. 29° W	4 1/2	
D.								
E.								
F.				White Oak	10'	S. 42 1/2° W	21.	
G.								
H.								
I.								
K.								
L.								
M.								
22.				elm.	20"	S. 30° W.	27	
1.				Hickory.	20"	N 30° W.	10.	
L.				White Oak.	20"	S. 20° W.	23.	
				" " " "	9"	N. 60° E.	20.	
				Black Walnut.	15"	S. 50° W.	31	
				Red Elm.	10"	N. 4° E	-	

Section 22 Township 20 North, Range 6 West.

INDEX.	CORNERS.	SIZE.	MARKS.	WITNESSES.	SIZE.	DIRECTION.	DISTANCE.	MARKS.
				B. Walnut	4"	S. 28 1/2° E	8	
7				" " "	6"	N 53° W	38.	
7				Black Jack.	6"	N 64° E	12 1/2	
8				" " "	4"	S 17° E	17 1/2	
				Mulberry.	3"	N 39° W	31.	
				White Oak.	24"	S. 17 1/2° E	41.	Black. 85
				D. W. yr of D. W. yr April 24 th 1879.				
				→ Vide "Old Record"				

Section 23 Township 20 North, Range 6 West.

INDEX.	CORNERS.	SIZE.	MARKS.	WITNESSES.	SIZE.	DIRECTION.	DISTANCE.	MARKS.
W. X. Y.	<i>Stone, distance</i> <i>Stone.</i> <i>Stone.</i>	22'x13'x3'	"W" "X"				<i>Grant J. M. G. Ind</i>	



INDEX.	CORNERS.	SIZE.	MARKS.	WITNESSES.	SIZE.	DIRECTION.	DISTANCE.	MARKS.
A.	Stone			White Oak	15"	S 32 W	50 l	
B.	Stone							
C.	Stone							
D.	Stone							
E.	Stone			Stone		N	45 l	
F.								
G.								
H.								
I.								
K.								
L.	Stone							
M.								
25.	Stone			Elm	8"	S 45 E	35 links	
1.	Stone			White Oak	20"	N 28 W	11 links	
2.	Stone							

Section

Township

North, Range

West.

INDEX.	CORNERS.	SIZE.	MARKS.	WITNESSES.	SIZE.	DIRECTION.	DISTANCE.	MARKS.
--------	----------	-------	--------	------------	-------	------------	-----------	--------

February 22, 1899. Due notice having been given by R. N. Loring, corners were established at C, D, 1 & 27.

W. A. Murphy }
E. Smith } chairmen

James A. Harding Co. S.

Sept. 30 1915

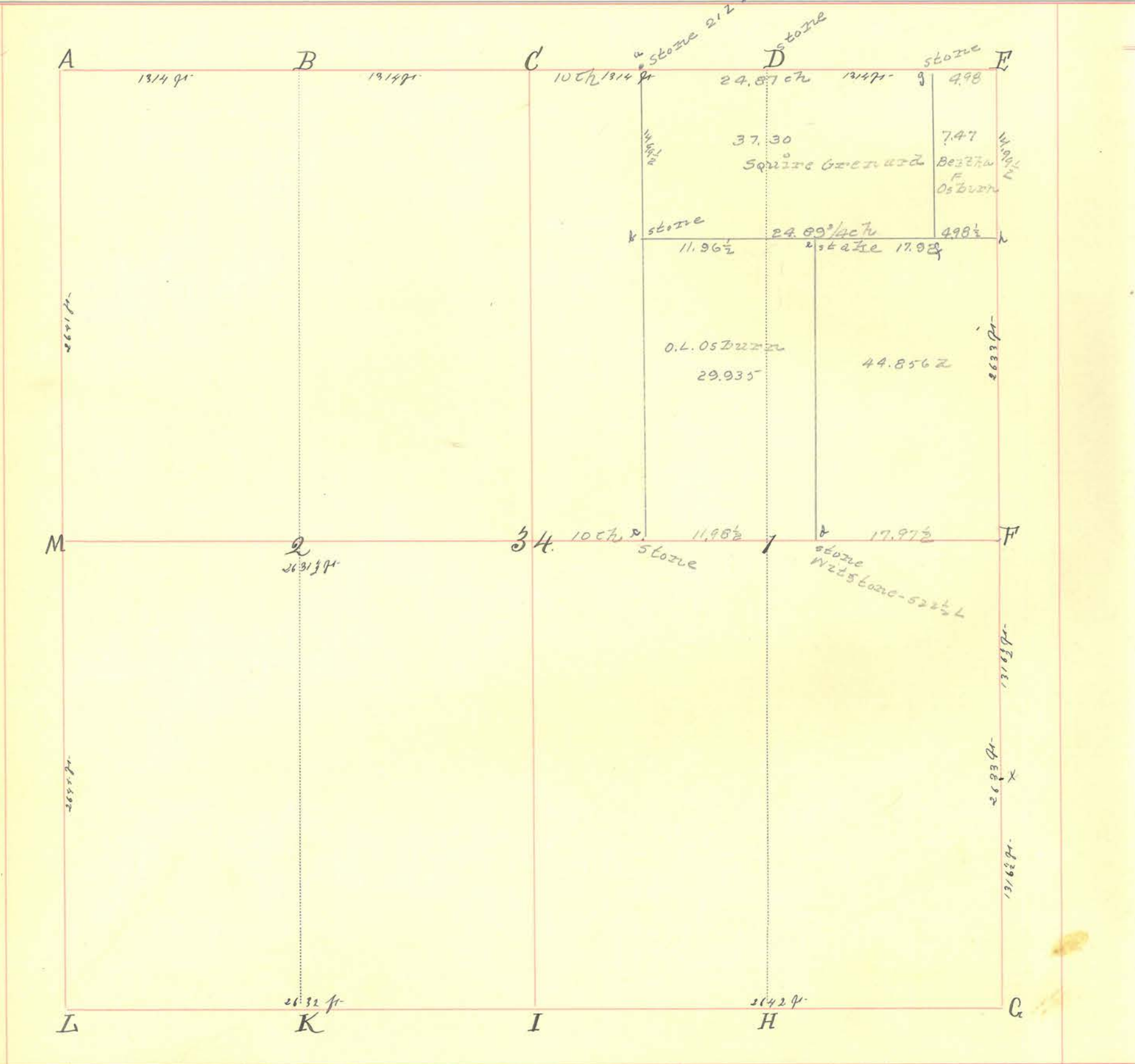
Due notice having been given all interested parties, a survey was begun on above date, and completed on Oct. 4 1915, to establish the section line between sections twenty-four and twenty-five

This survey was made by running a straight line between stone at S.E. corner of Section 24, and post, marking corner at S.W. corner of same section, stones previously established at "C" and "D" by a former survey were found to be on line with points marking above named corners.

Milton L. Nees Surveyor
Montgomery Co.
W. S. Harding Deputy.

INDEX.	CORNERS.	SIZE.	MARKS.	WITNESSES.	SIZE.	DIRECTION.	DISTANCE.	MARKS.
x. y.				Black Walnut. White Oak. Glicery. " " "	5" 14" 10" 8"	S. 17 $\frac{1}{2}$ W N. 73° E N. 39 $\frac{1}{2}$ W S. 49° E.	20. 78. 6. 10.	(Buck, C.S.)

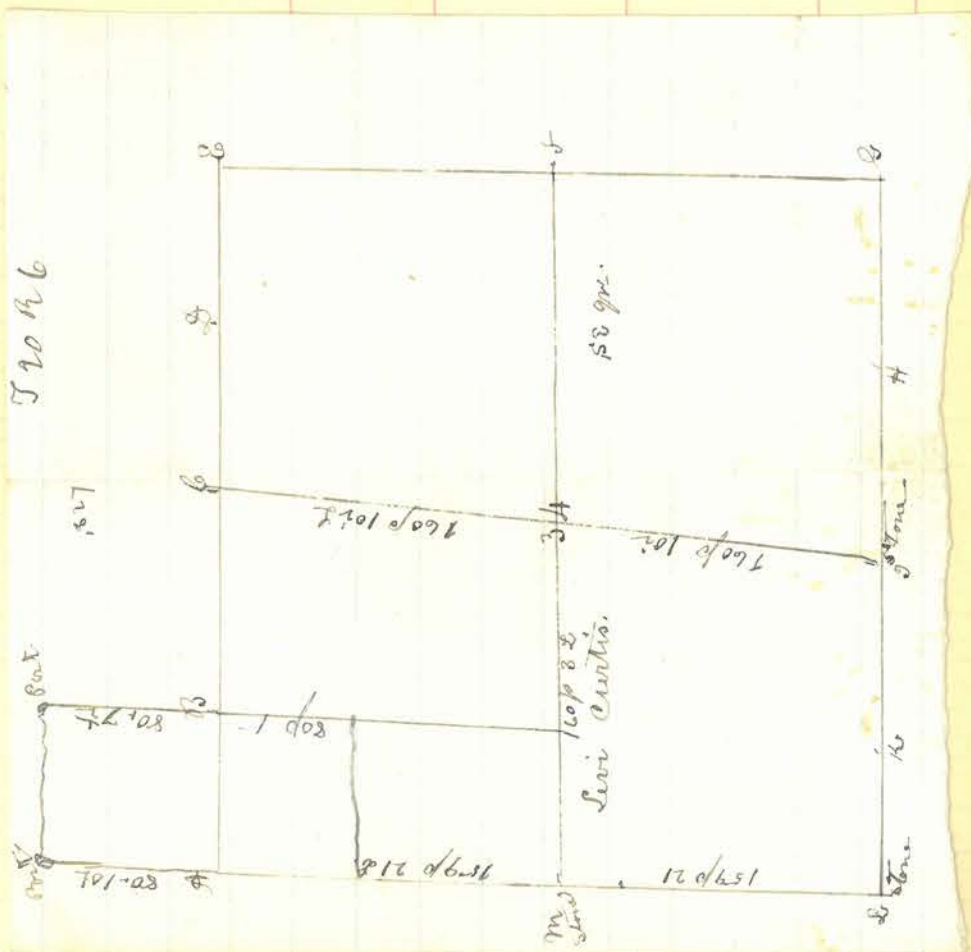
Section 34 Township 30 North, Range 6 West.

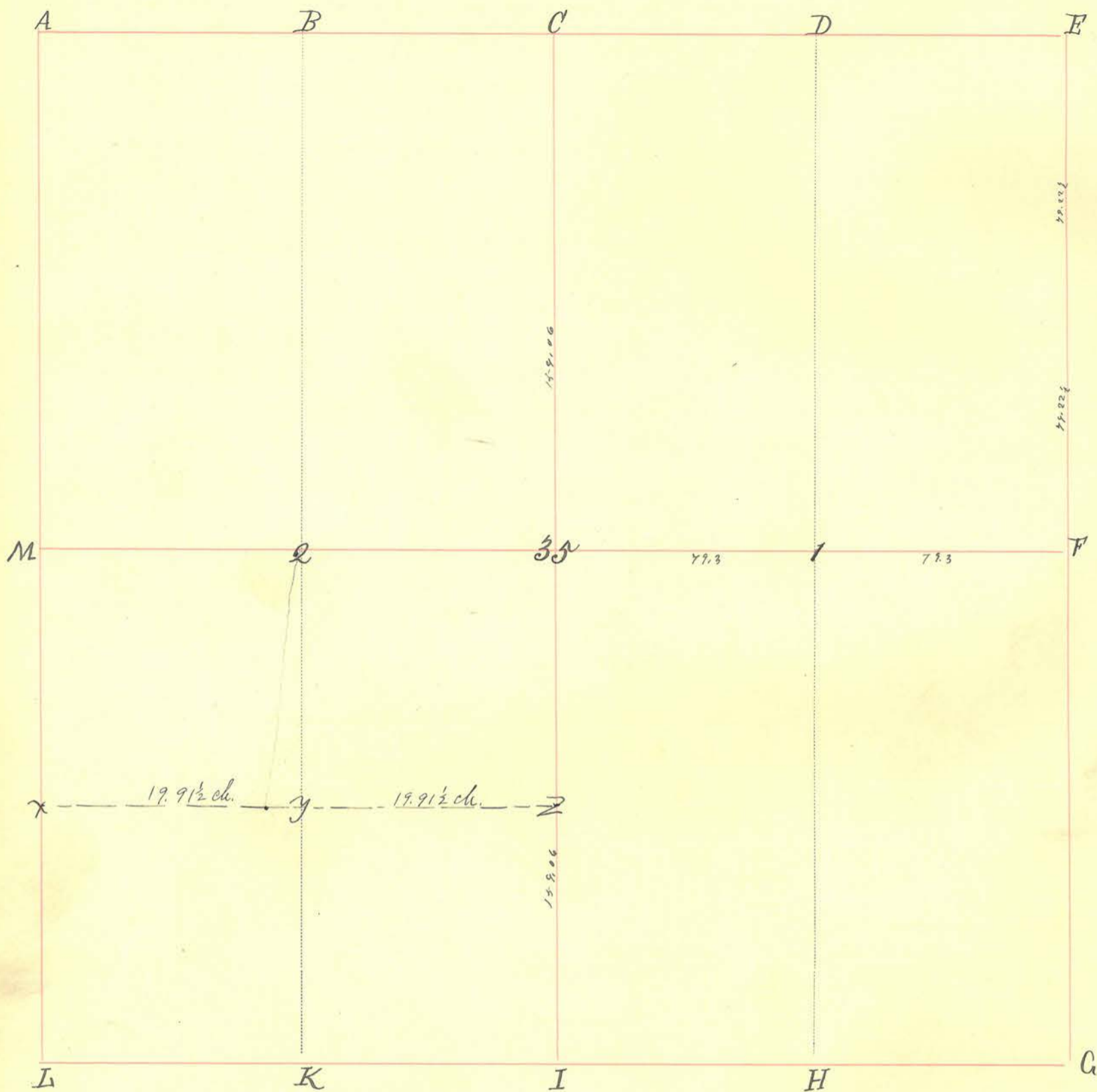


INDEX.	CORNERS.	SIZE.	MARKS.	WITNESSES.	SIZE.	DIRECTION.	DISTANCE.	MARKS.
A.	Stone.							
B.				Black Walnut.	10"	S 52° E.	98 ft.	
C.	stone			Elm.	8"	S 31° E.	76 "	
D.	Measured 2 1/2 ft. E.			Hickory "	18"	S. 61° E.	40 "	
E.				Black Walnut	10"	S 31° W.	40 "	
F.	stone			White Oak.	12"	N. 55° E.	37 1/2 "	
G.				Sugar.	16"	N 20° E.	34 "	
H.				Slake		S.	17 ft.	
I.				" "		N.	12 "	
K.				Poplar.	10"	N. 56° W.	24 "	
L.				Jack Oak. Slump	30"	N. 26° W.	17 "	
M.				White Walnut	36"	N. 74° E.	19 ft.	
34.				Gr. Elm.	30"	S 28° E.	41 "	
1.				Slake.		N.	14 "	
2.				" "		S.	14 "	
X.				White Walnut.	16"	S 13° W.	43 1/2 ft.	
				" " " "	18"	S 70° W.	55 "	
				Oak Slab		S.	11 ft.	
				Slake		E.	12 "	

Survey of the NE¹ Sec 34 - Made April 14 - 1911 - for L.O. Osburn and
 Square Grenard. Ran lines and set corners as shown on plat.
 Milton L. Nees - Surveyor, Hart Co.

- a STONE
- b STONE
- c STONE
- d STONE
- e STAKE
- f
- g
- h STONE





INDEX.	CORNERS.	SIZE.	MARKS.	WITNESSES.	SIZE.	DIRECTION.	DISTANCE.	MARKS.
A.								
B.								
C.								
D.								
E.	Stone.							
F.								
G.								
H.								
I.	Stone.			Original.				
K.								
L.								
M.								
35.	Stone in Road.							
1.	Stone in Road.							
Q.								
x	Stone							
y	Stone							
z	Stone							

INDEX.	CORNERS.	SIZE.	MARKS.	WITNESSES.	SIZE.	DIRECTION.	DISTANCE.	MARKS.
--------	----------	-------	--------	------------	-------	------------	-----------	--------

Survey in South-west quarter of said section for Mrs. Westfall and Edward Kempf for the purpose of establishing corner at 'y' the same being the south-east corner of the North-west quarter of said South-west quarter.

March 28-1892 ten days notice having been given to the land owners adjacent to said corner, I established a corner at 'y' as follows: stones being already at 'x' and 'z', I ran the line from 'z' to 'x' on 3°20' East and set stone at 'y' 24"x12"x10" at a point equidistant from 'x' and 'z' no bearing trees near. Chairmen (James H. Rivers) (Ernest A. Cunningham) sworn (Wm. P. Hunt, Surveyor M. Co. Ind.)

Prayer for appeal from said survey filed by said Edward Kempf this 20th day of August 1892. Wm. P. Hunt Surveyor, M. Co. Ind.

The papers in the foregoing survey with a certified copy of the above and foregoing field-notes were turned over to the Clerk of the Montgomery Circuit Court this 23d day of August 1892. Wm. P. Hunt Surveyor M. Co. Ind.

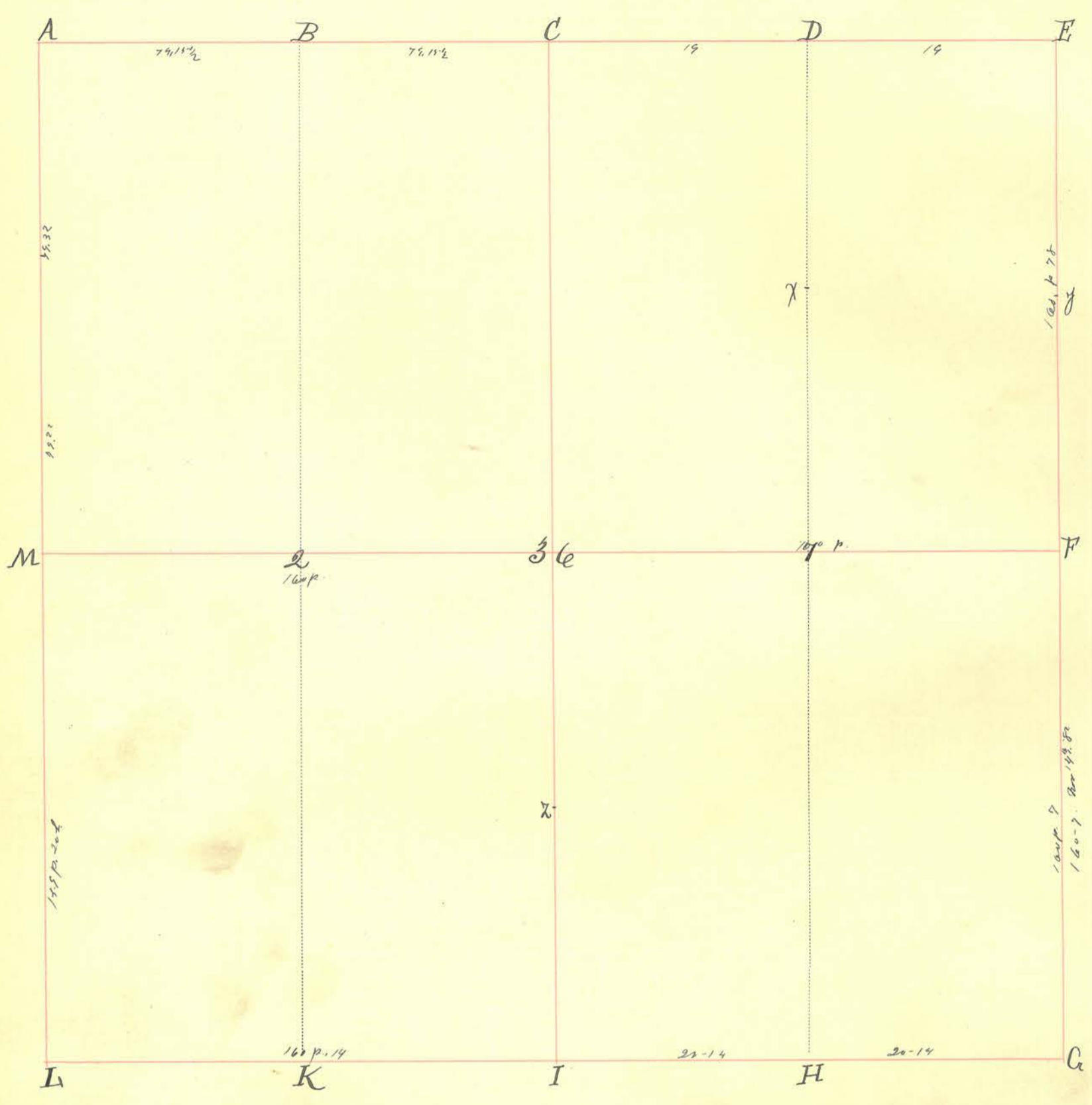
Jan 31st 1895

Being ordered by the Court I ran a line down the center of a highway running from 2 which varied S 3°20' W to a point in said highway 115 links due West of 4 and there placed a stone as ordered by the Court

Ira Wynkoop } Chairman
Harvey Wynkoop }

Harvey E. Wynkoop Surveyor.

Kempf
and
Westfall



INDEX.	CORNERS.	SIZE.	MARKS.	WITNESSES.	SIZE.	DIRECTION.	DISTANCE.	MARKS.
A.	Stake.							
B.	Stone			Elm.	4"	S. 70 1/2° E	18'	Nov 14 1/2 83.
C.	Stake.							
D.	Stone.							
E.	Stone.							
F.	Stone.							
G.	Stone.			1/2 Oak	16"	N. 8° E	17.	
H.				" " "	12"	S. 86° W	20.	
I.				White Oak.	24"	S. 38° W	18 1/2	
K.								
L.				Red Oak.	10"	N. 36 1/2° E.	14 1/2	
M.				" " "	10"	S. 30° W	10 1/2	
36.				White Oak.	18"	N. 24 1/2° E.	88.	
1.	Stake.			Elm.	16"	S. 26 1/2° W.	12 1/2.	
2.	Stone.			White Oak	24"	S. 38 1/2° E	160	
				Gickory.	14"	North	42.	

Section 36 Township 20 North, Range 6 West.

INDEX.	CORNERS.	SIZE.	MARKS.	WITNESSES.	SIZE.	DIRECTION.	DISTANCE.	MARKS.
X.				Black Oak.	20"	N. 32° W	34.	
Y.				White Oak.	20"	N. 34° W	104.	
Z.				" "	16"	S. 76° W	27.	(Black, 65)
				" "	18"		16.	
				" "	19"	S. 64° E		

Due notice having been given by F. E. Bowler, on November 14th & 15th '82 Corners were re-established. S. F. E. D. C. B. 2. & 1. Stones planted, except at C & 1, where stakes were driven.

Ira M. Connell A.M.C.
per D. W. Doty.