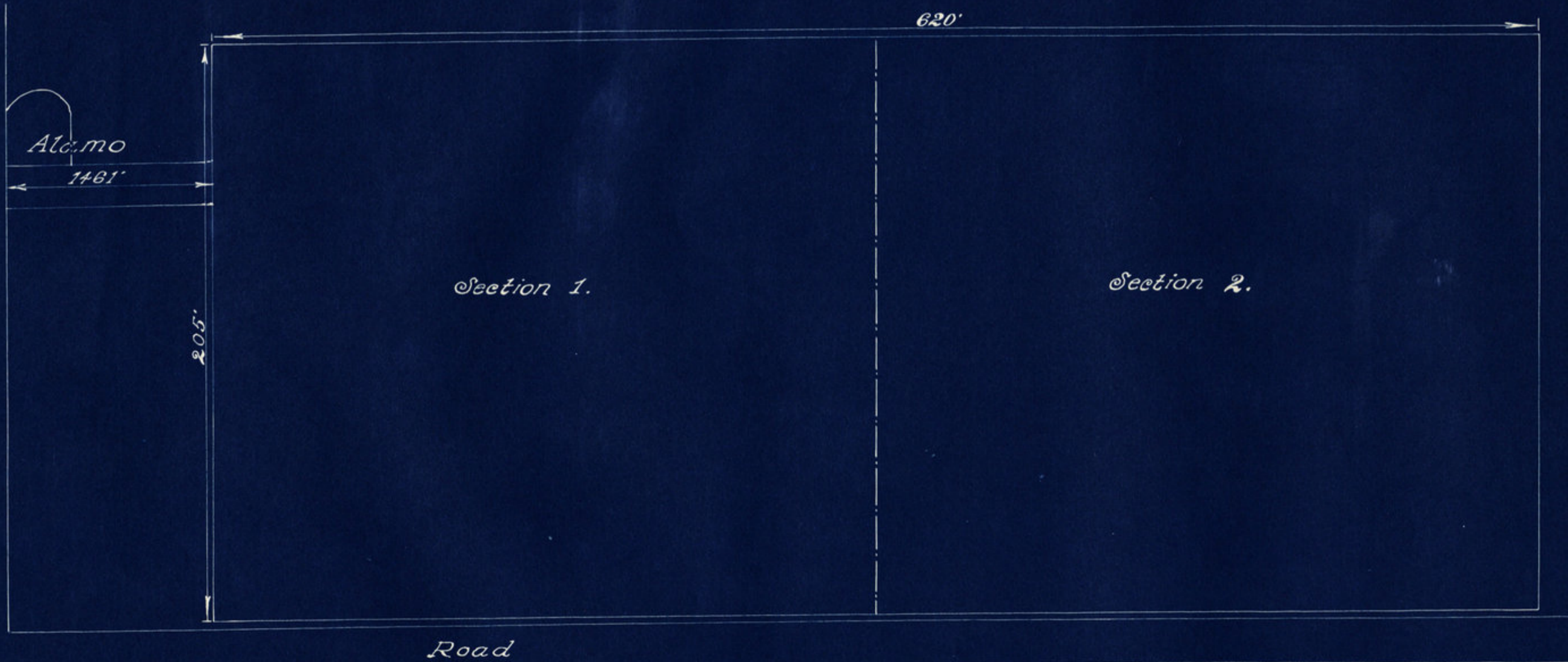
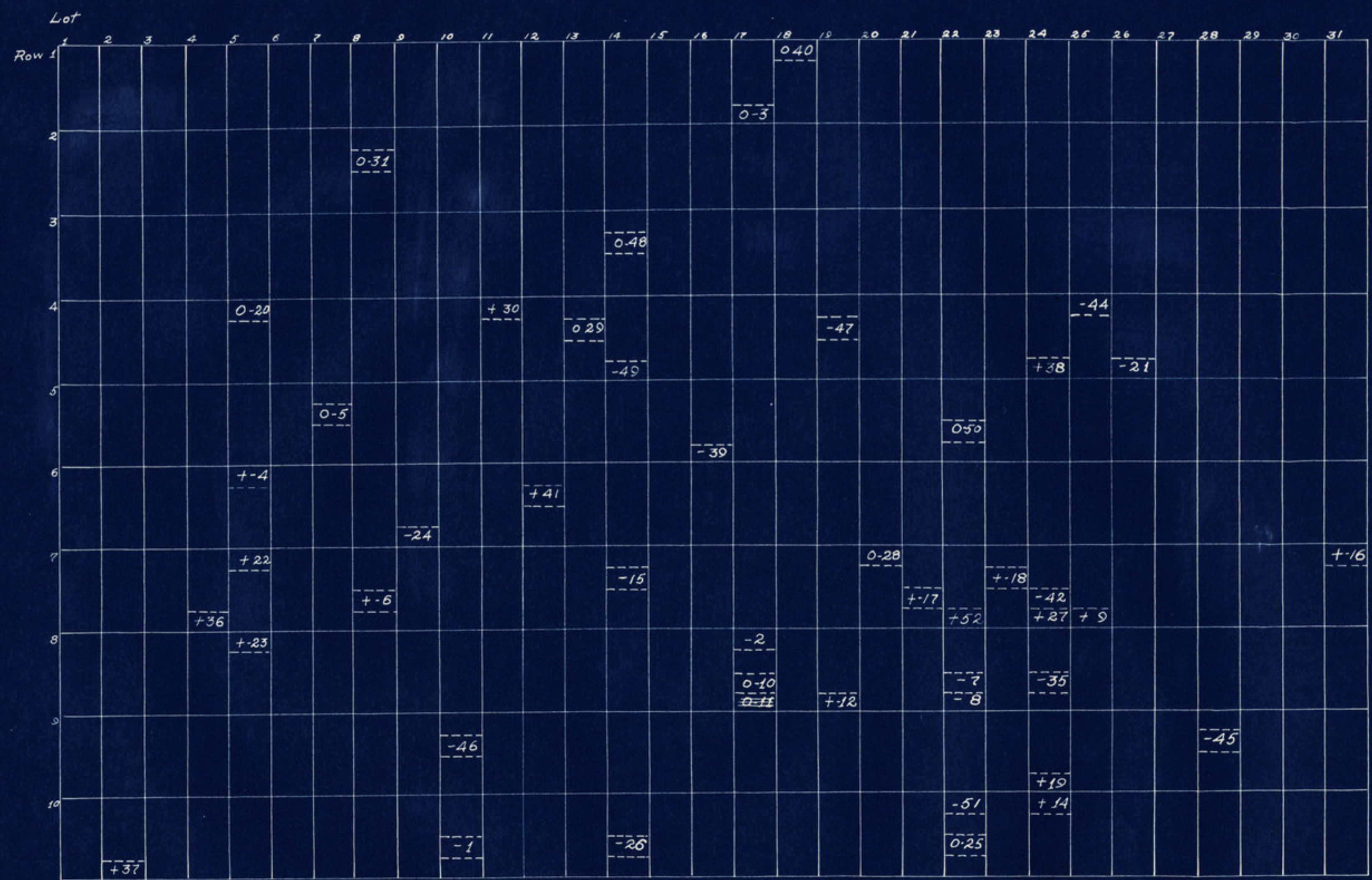


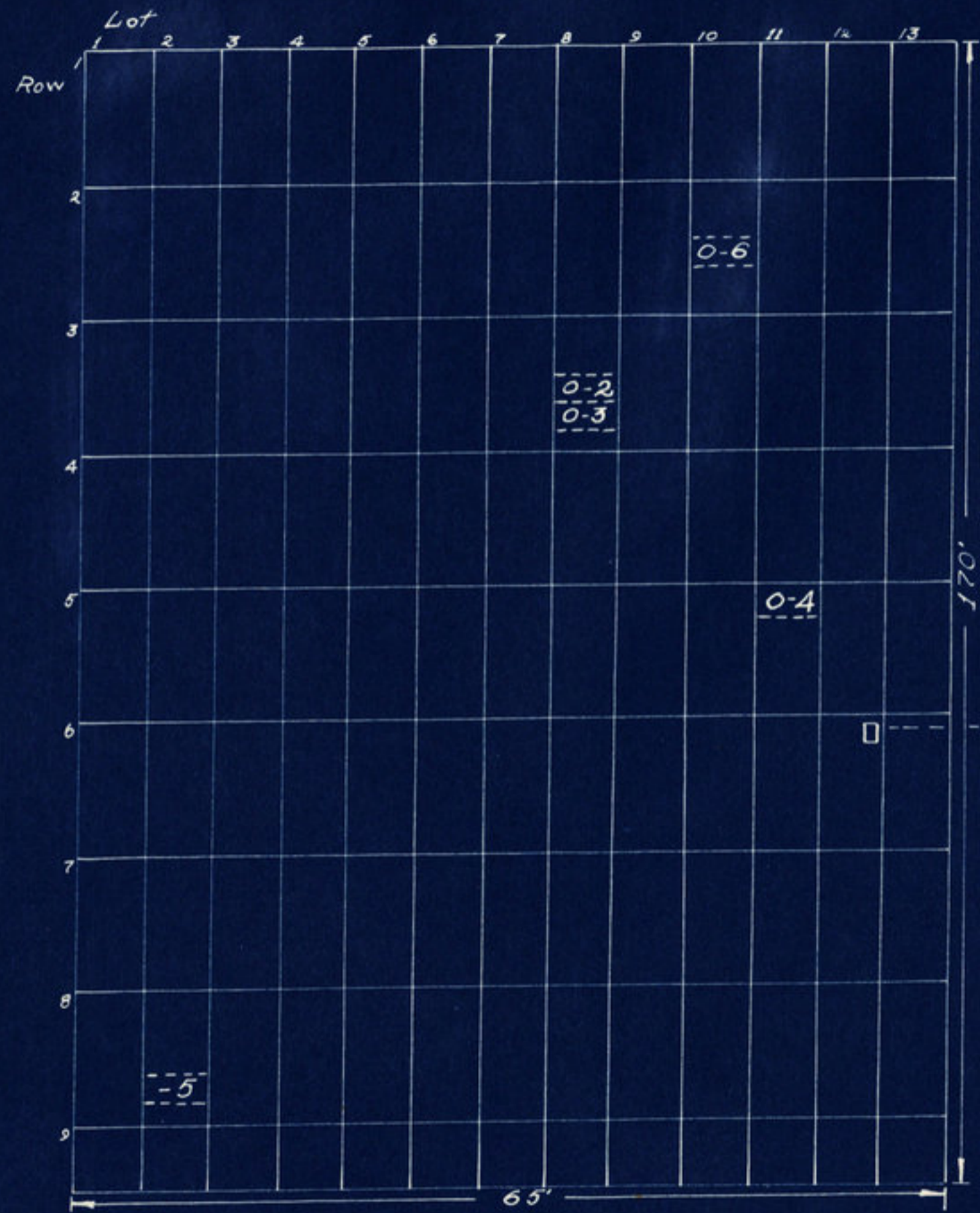
N



Alamo Cemetery
Ripley Twp. Montgomery County.
S.W. 1/4, Sect. 24, Twp. 18 N., R. 6 W.
Scale 40' = 1"
Drawn 1940.
Sheet 1 of 3.



Alamo Cemetery
Section 1
Scale 20' - 1"
Drawn 1940
Sheet 2 of 3



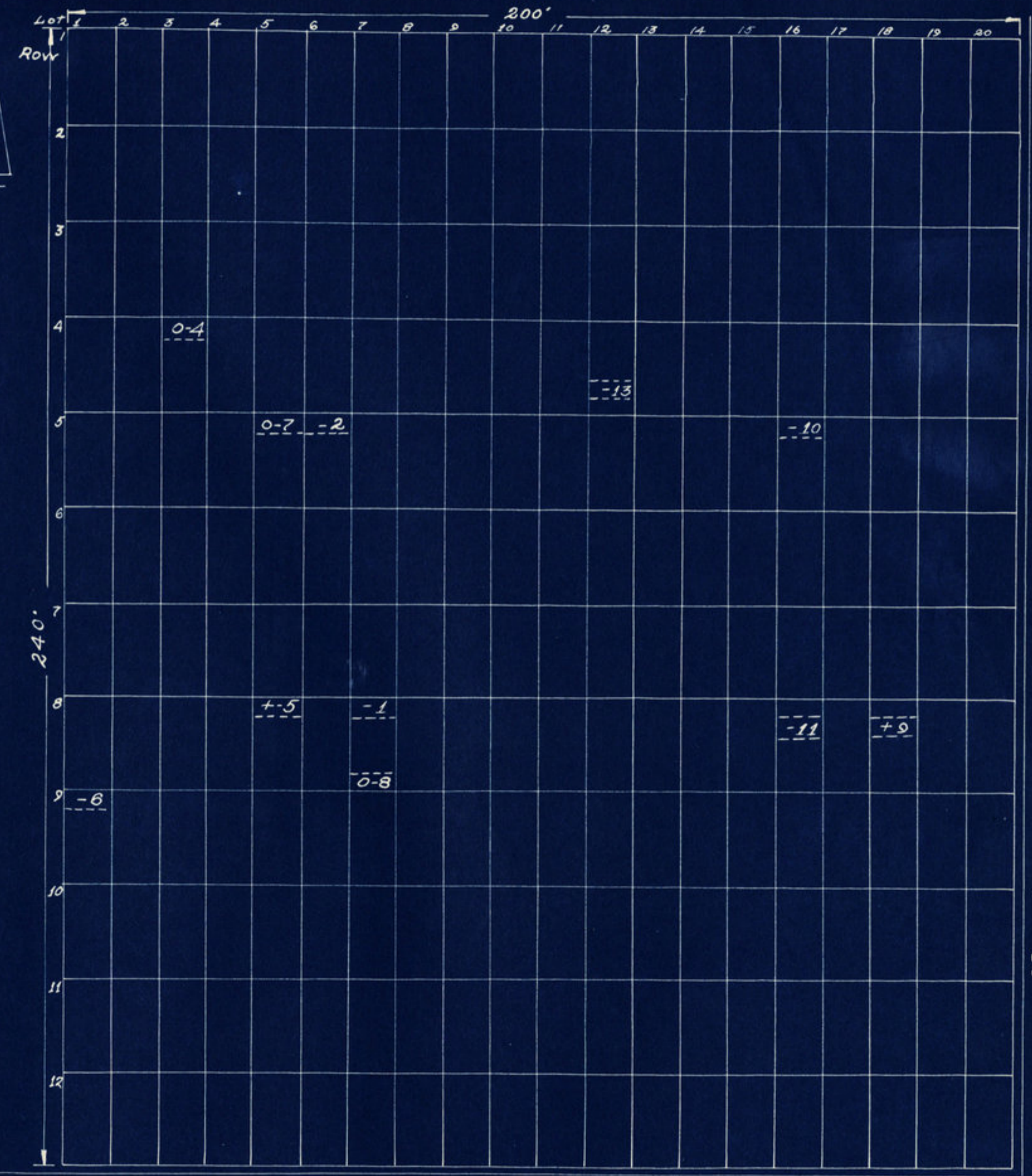
Black-Top Road - 25. 5mi. to Waynetown

Gravel Road

485'

170'

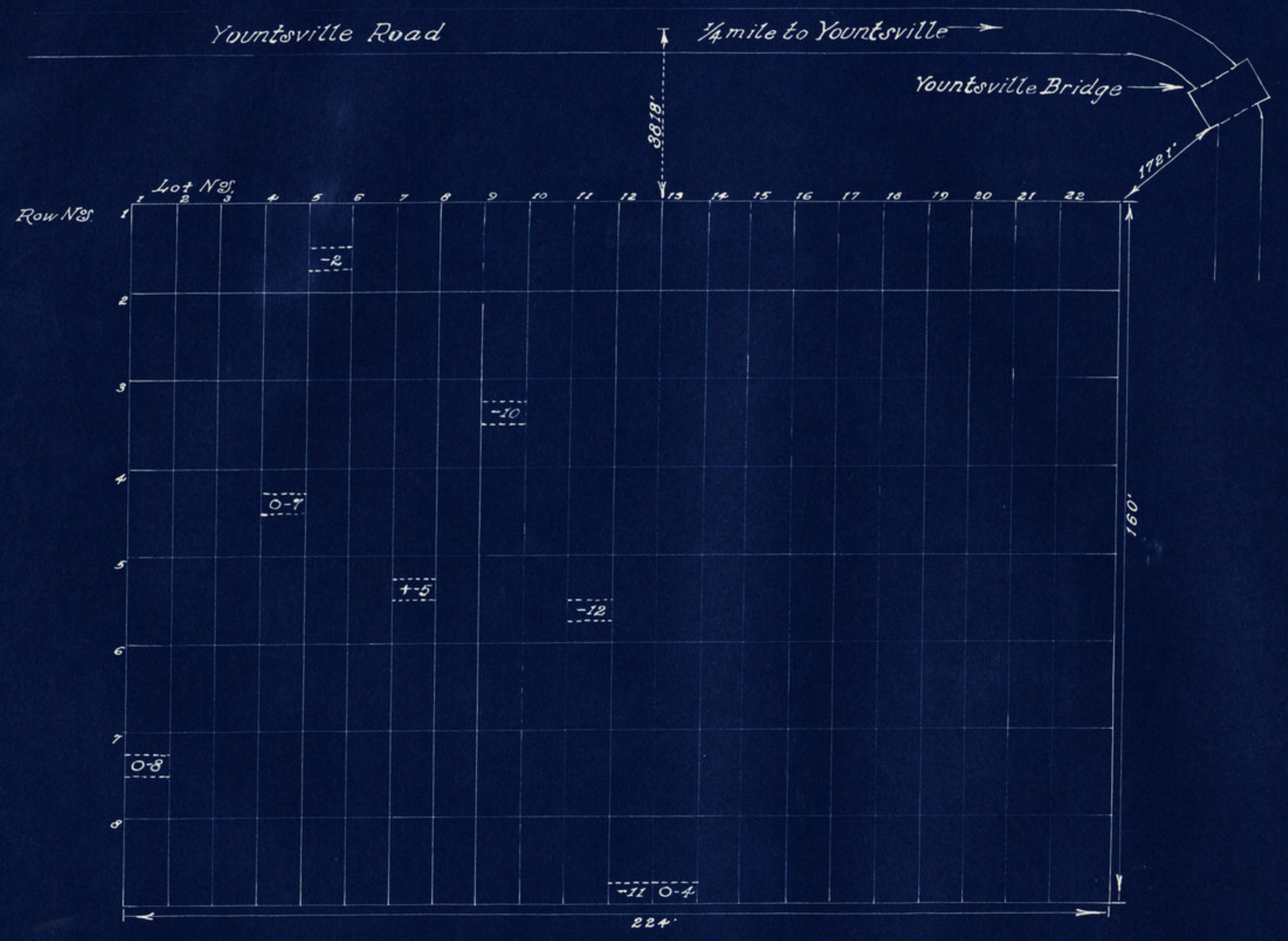
*McCormick's Cemetery
 Ripley Twp, Montg. Co.
 SW 1/4, Sect 11, Twp 18n, R. 6w.
 Scale 20' - 1"
 Drawn 1940.*



← Alamo 2 miles

Yountsville Road 3 miles

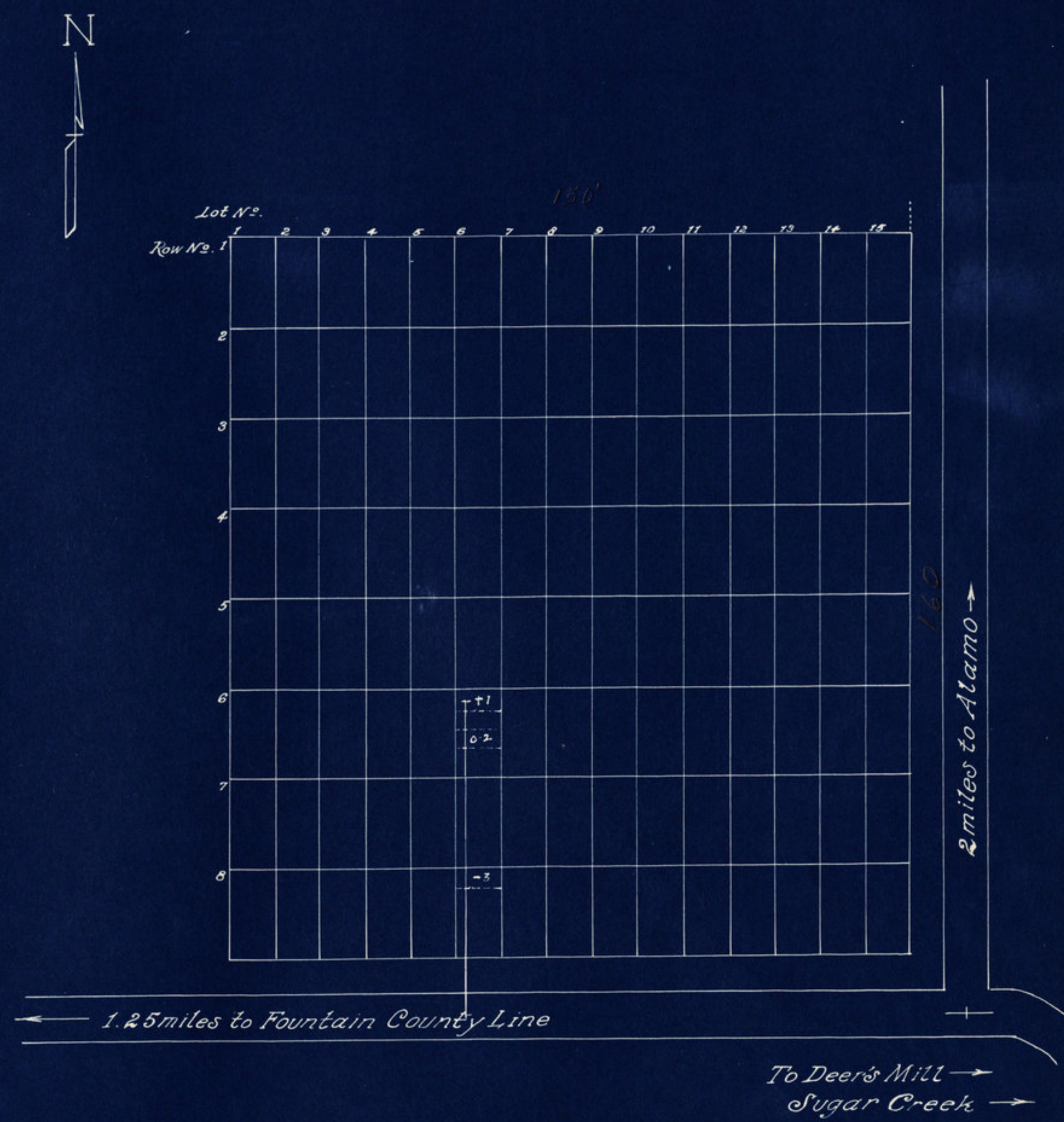
*Bunker Hill Cemetery
 Ripley Twp, Montg. Co.
 SW 1/4, SE 1/4, Sect 19, T. 18N, R. 5W.
 Scale 20' - 1"
 Drawn 1940.*



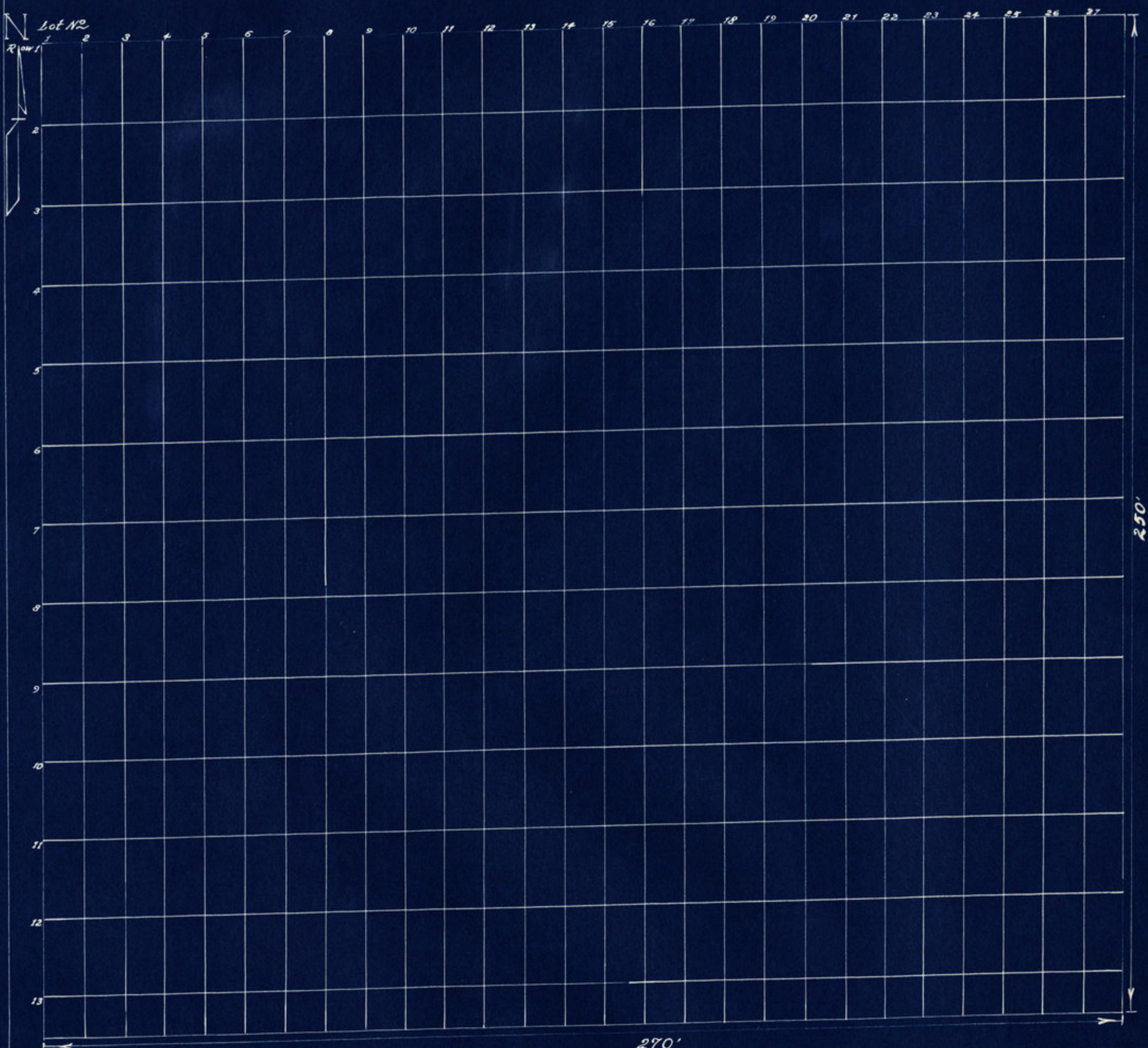
O'Neil Cemetery.
Ripley Twp. Montgomery County.
Pt. S.E. 1/4, N.W. 1/4, Sect. 8, Twp. 18 N., R. 5 W.
Scale 20' = 1" ¹⁰
Drawn 1940.



Spark's Cemetery.
 Ripley Twp. Montgomery County.
 Pt. S. E. 1/4, Sect 30, Twp. 18, R. 5.
 Scale 20' ~ 1"
 Drawn 1940.



Texas Cemetery.
 Ripley Twp. Montgomery County.
 N. W. 1/4, Sect 35, Twp. 18 N., R. 6 W.
 Scale 20' ~ 1"
 Drawn 1940.

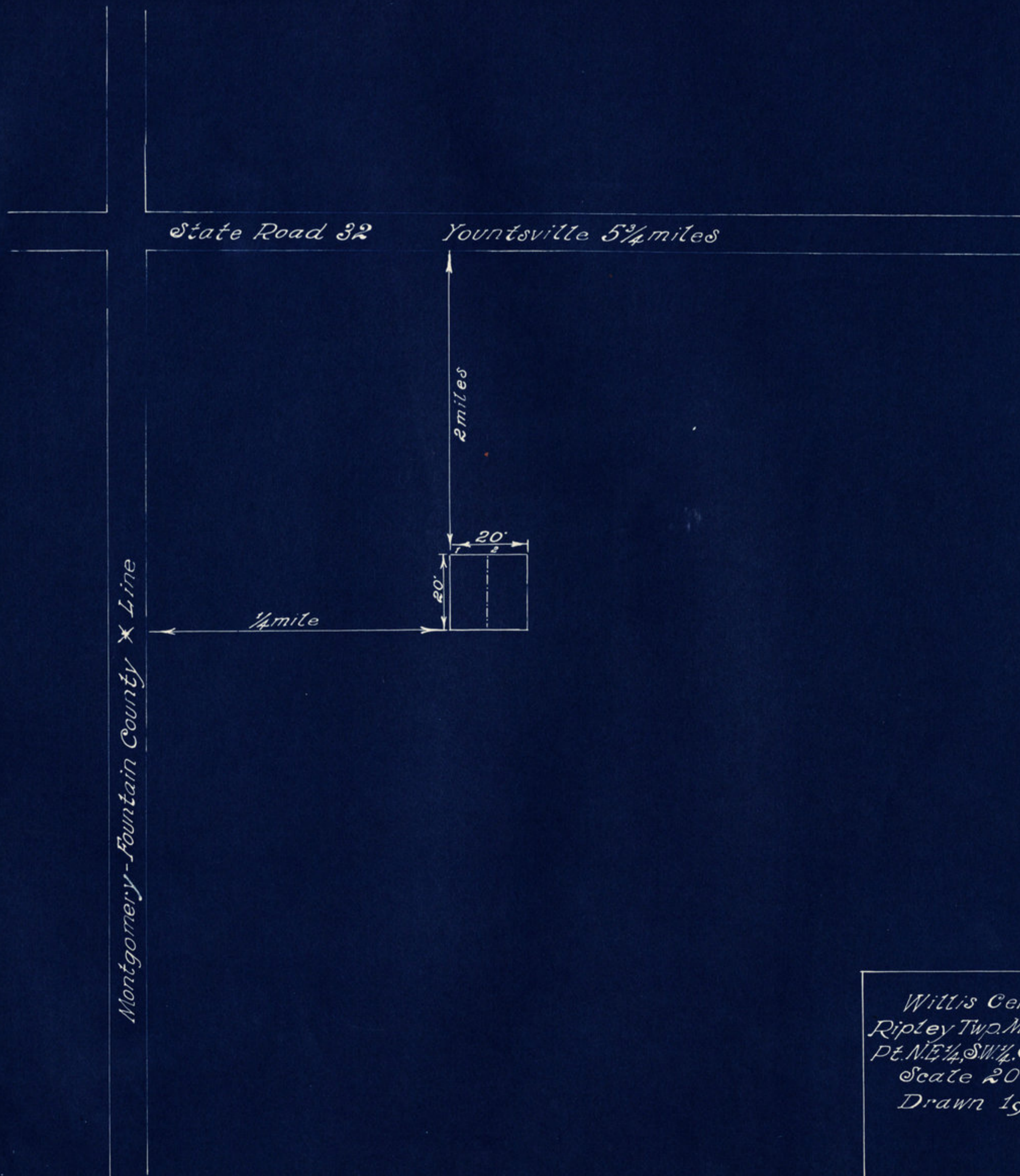


Perrysville Road to Yountsville $\frac{3}{4}$ mile →

Yountsville

Yountsville Cemetery.
 Ripley Twp. Montgomery County
 S.W. $\frac{1}{4}$ Sect. 4, Twp. 18N., R. 5W.
 Scale 20' = 1"
 Drawn 1940.

II



*Willis Cemetery.
Ripley Twp. Montgomery County.
Pt. NE 1/4, SW 1/4, Sec. 15, T. 18., R. 6.
Scale 20' = 1"
Drawn 1940.*