

CRAWFORDSVILLE

Montgomery Co.
INDIANA

Sanborn Map Company
NEW YORK
FEBY 1925

Copyright 1925 by the Sanborn Map Co.

Great care is exercised in the production of our publications and in accordance with the highest accuracy is not guaranteed.

Population 12000
Prevailing Winds - West.

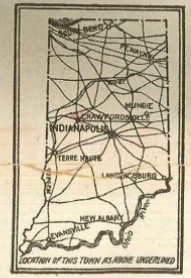
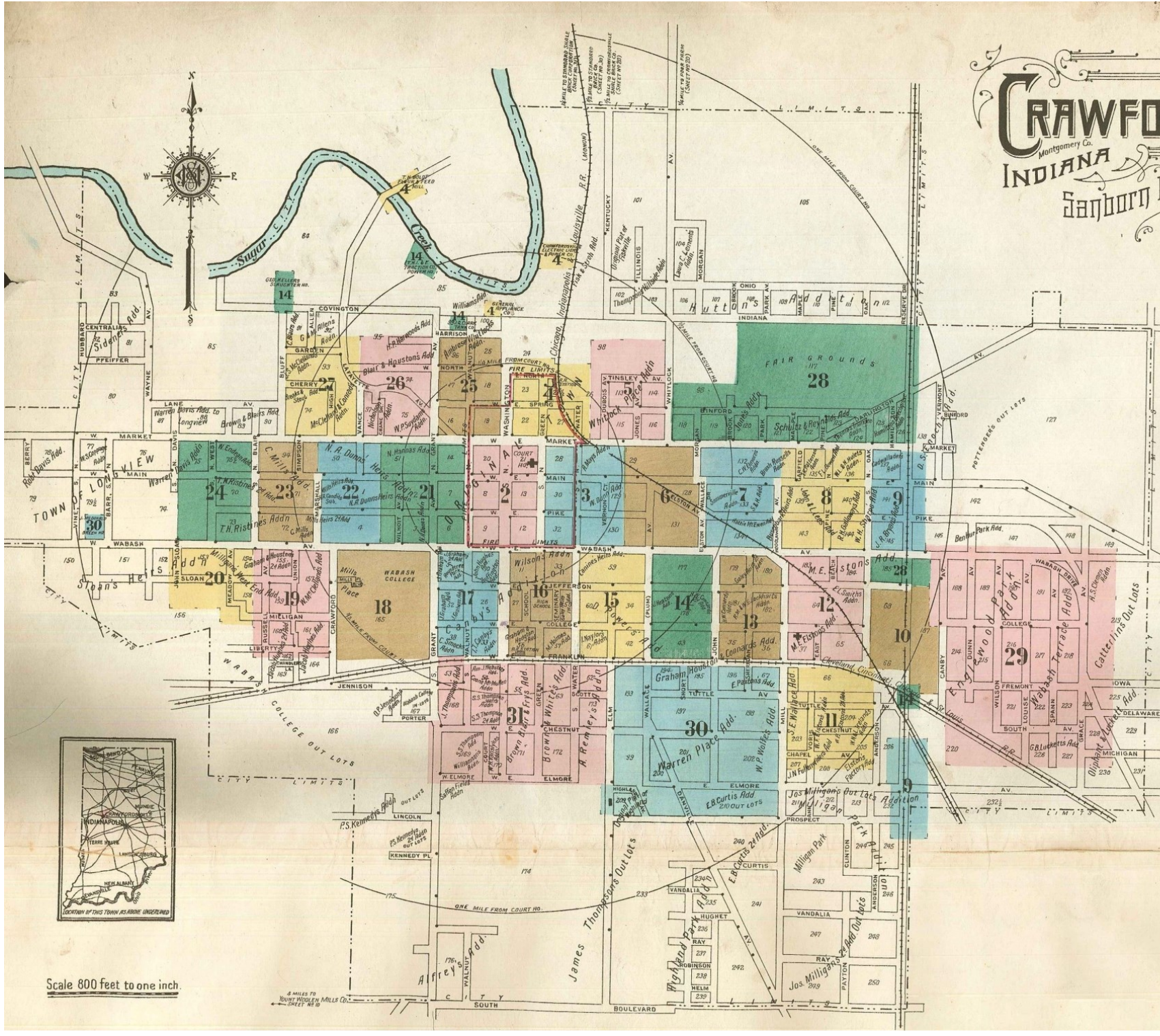
GRADIS MOSTLY LEVEL.
50 MILES OF RAIL PREVENTION ON PRINCIPAL STREETS.
PUBLIC LIGHTS ELECTRIC. ARC AND INCANDESCENT.

WATER FACILITIES: Direct pressure system of water works owned and operated by the Northern Indiana Gas & Electric Co. Water supply from 13 flowing wells and one natural spring. Reservoir at pumping station, capy 135,492 galls.
One Worthington triple expansion steam force pump, (19-30-16-24) capy 2800 galls. per min. One Worthington compound duplex steam force pump (65-124-10) capy 5200 galls. per min. 4 DeLaval centrifugal electric pumps, two of 1050 galls. capy each per min. one of 700 galls. and one of 400 galls. capy per min.
Water pipes 4" to 14" diam (mileage not obtainable). 205 double hydrants. Domestic pressure 50 lbs. Fire pressure 120 lbs.
Average daily consumption 800,000 gallons.

FIRE DEPARTMENT:
One chief, one assistant chief and 17 men fully paid. Two fire stations.
STATION NO. 1. One American-La France triple combination auto. truck with pump of 750 galls. capy per min., 40 gal. chemical tank 200 ft. 1 1/2" chemical hose and 1500 ft. 2 1/2" cotton rubber lined hose. 1000 ft. 2 1/2" cotton rubber lined hose in reserve.
STATION NO. 2. One American-La France combination hose and chemical auto truck with 1500 ft. 2 1/2" cotton rubber lined hose. 40 gal. chemical tank and 200 ft. 1 1/2" chemical hose.
Gamewell fire alarm system. 25 boxes. Headquarters at station No. 1. 1571 N. Green. 2 story bld. ordinary brick construction. Fire bell at both stations. Telephones.

KEY

	FIRE WALL IN ABV ROOF
	METAL CORNICE
	WOOD CORNICE
	FIRE WALL IN ABV ROOF FRAME PARTITION
	OPENING WITH IRON DOOR
	" IRON DOOR
	WINDOWS & IRON SHUTTERS
	WINDOW 1ST STORY
	WINDOWS 2ND & 3RD STORIES
	" 2ND & 3RD "
	STABLE (C)
	CONCRETE BLOCK
	BUILDINGS COLORED YELLOW ARE FRAME
	" RED "
	" BRICK "
	" IRON "
	" GRAY "
	" BROWN FIRE PROOF "
	AUTOMATIC SPRINKLER
	FIRE STATION. AS SHOWN ON KEY MAP
	ALTERNATE STREET NUMBERS ARE ACTUAL
	CONSECUTIVE STREET NOS. ARE ARBITRARY



Scale 800 feet to one inch.