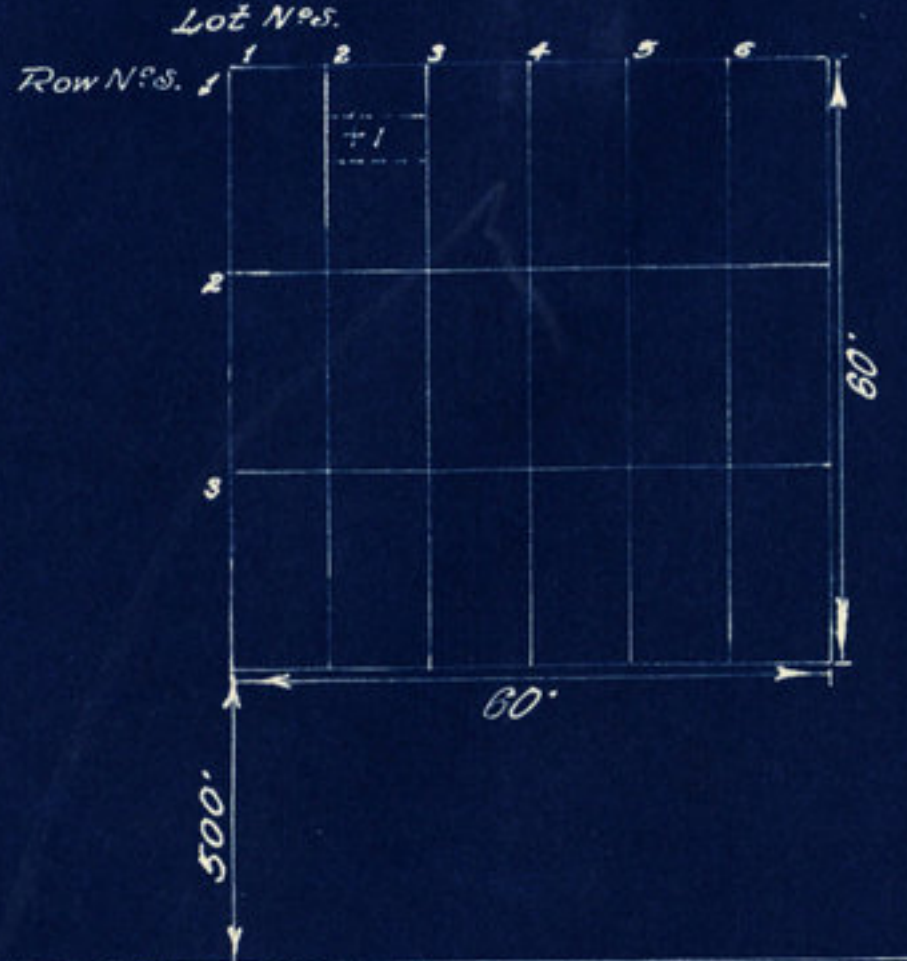




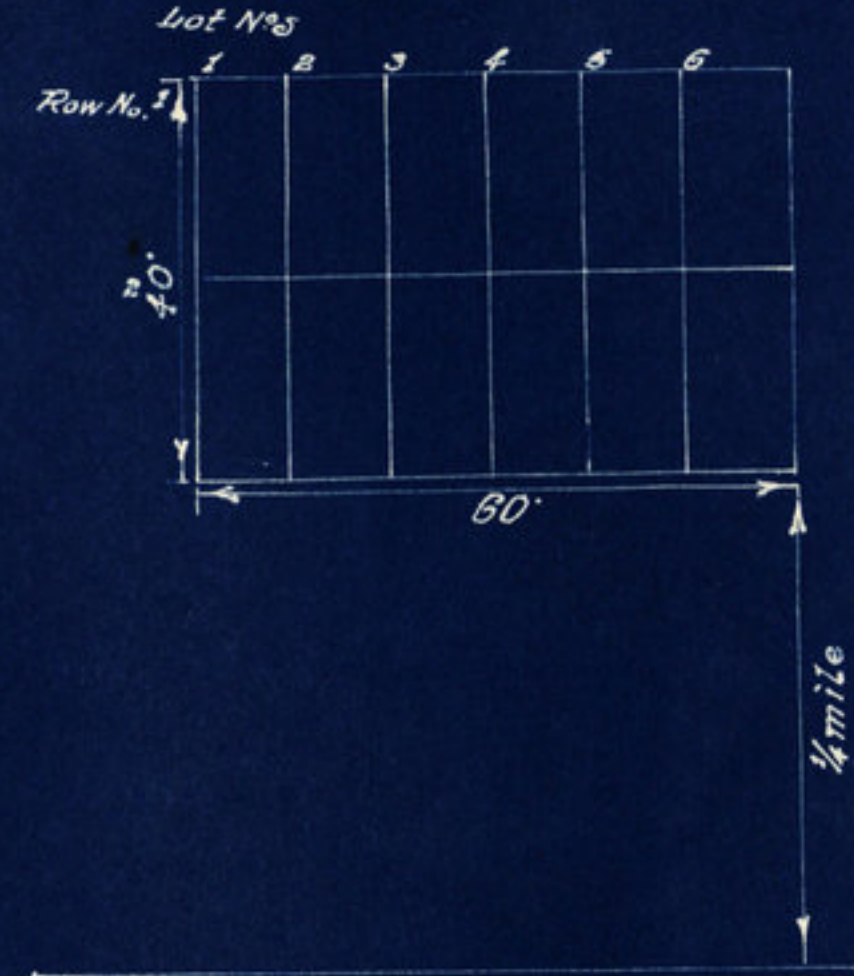
Gravel Road



State Road 43

Parkersburg 1 mile →

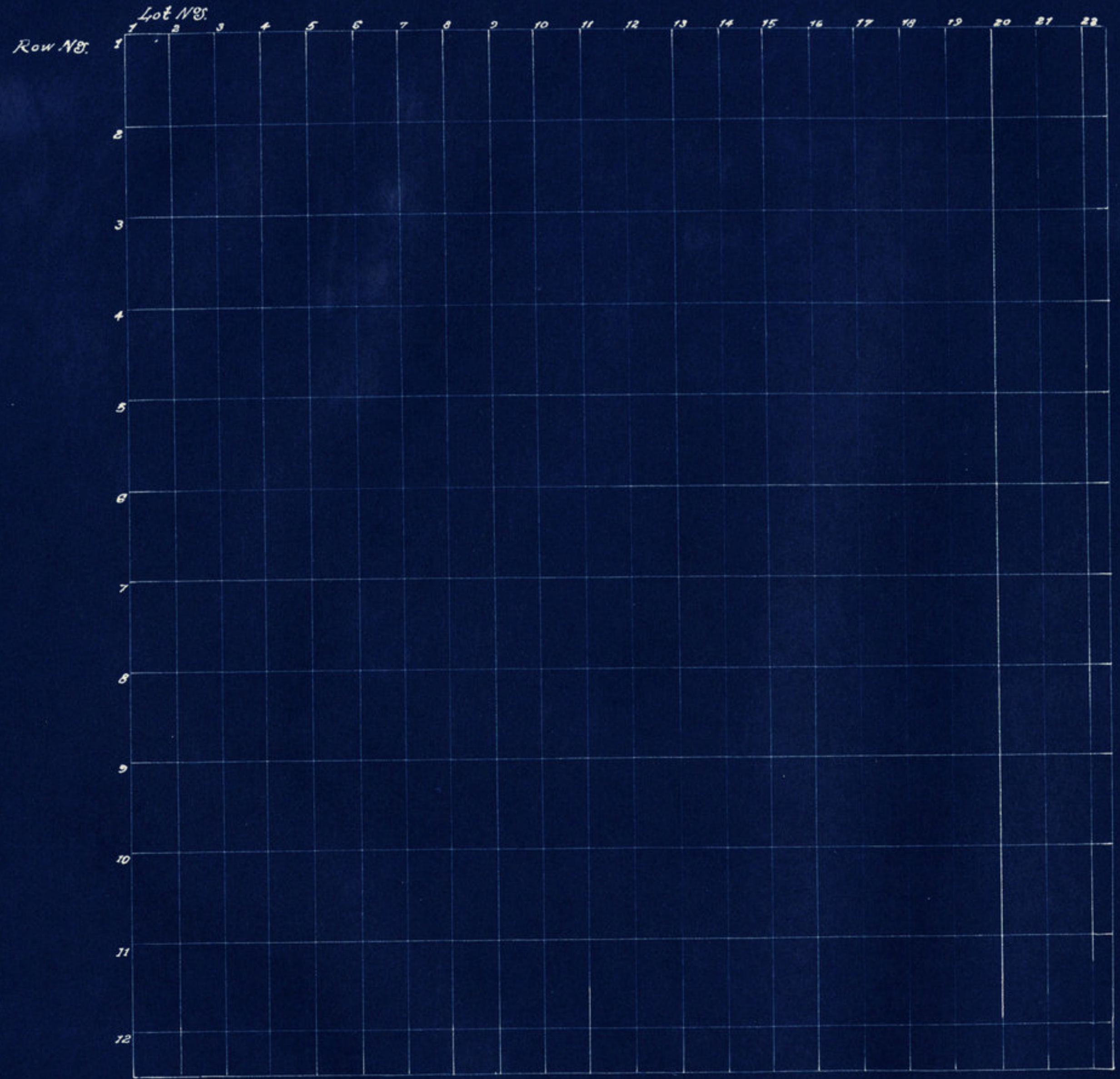
Wasson Cemetery.
 Scott Twp. Montgomery County.
 NE 1/4, S.W. 1/4, Sec. 29, Twp. 17, R. 4 W.
 Scale 20'-1"
 Drawn 1940.



State Road 234

S.R. #43

Armstrong Cemetery.
 Scott Twp. Montgomery County.
 Pt. N. 1/2, Sect. 7, Twp. 17, Range 4.
 Scale 20'-1"
 Drawn 1940.



Crawfordsville Road *

1/2 mile to Ladoga →

11 miles to Crawfordsville →

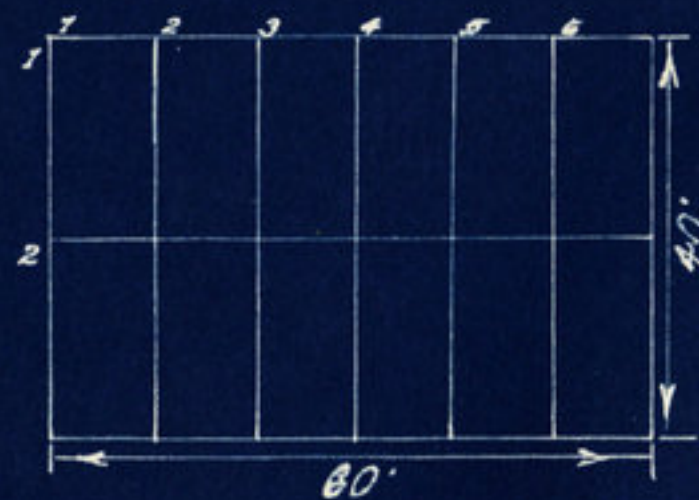
← Ladoga 1 mile

Brethern Cemetery.
Scott Twp. Montgomery County.
NE 1/4, Sect. 12, T. 17N. R. 4W.
Scale 20' - 1'
Drawn 1940.



State Road 43 Crawfordville 11.5 miles

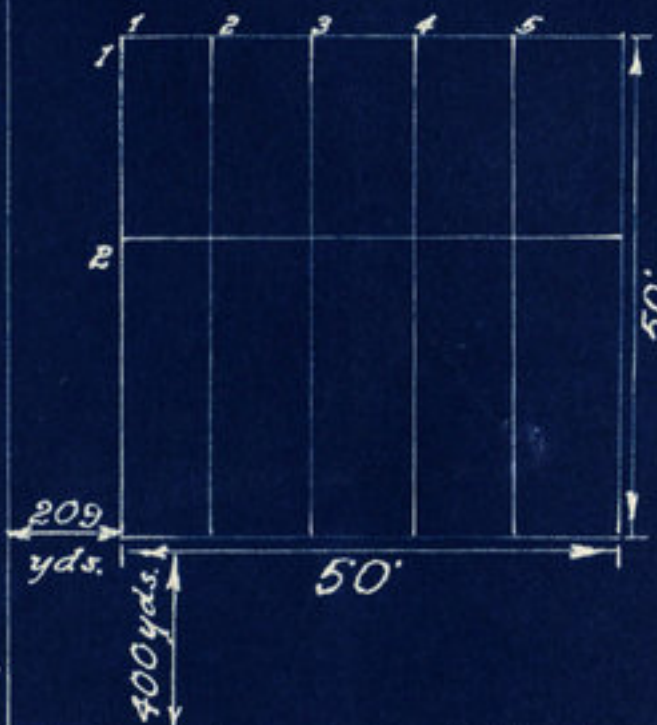
Parkersburg



Old Harshbarger Cemetery.
Scott Twp. Montgomery County.
Pt. S.E. 1/4, NW 1/4, Sec. 34, T. 17N., R. 4W.
Scale 20' = 1"
Drawn 1940.

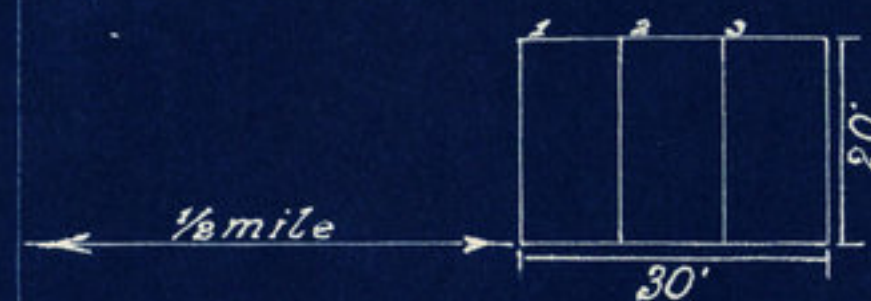


Byrd Gravel Road



Haw Creek Gravel Road

Thompson Gravel Road



Montgomery-Putnam County-line Road

Byrd Cemetery. (above)
Scott Twp. Montgomery County.
Sect. 26, Twp. 17N., R. 4W.
Scale 20' = 1"
M. & Murray Cemetery (below)
Scott Twp. Montgomery County.
Sect. 36, Twp. 17N., R. 4W.
Scale 20' = 1"
Drawn 1940.



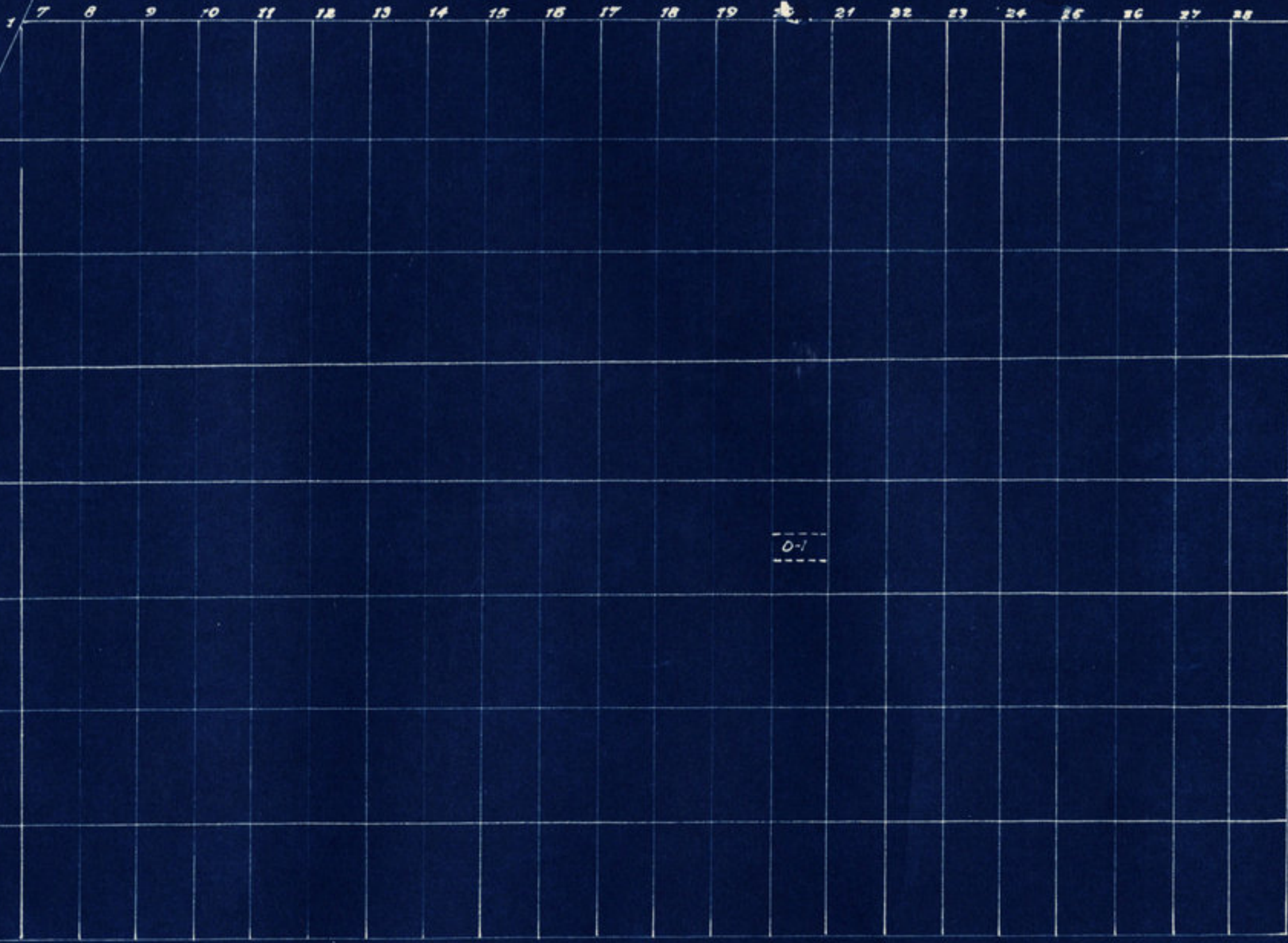
1 1/2 miles to Crawfordsville →

Road 43

Parkersburg

← Parkersburg 2 3/4 miles

Gravel Road



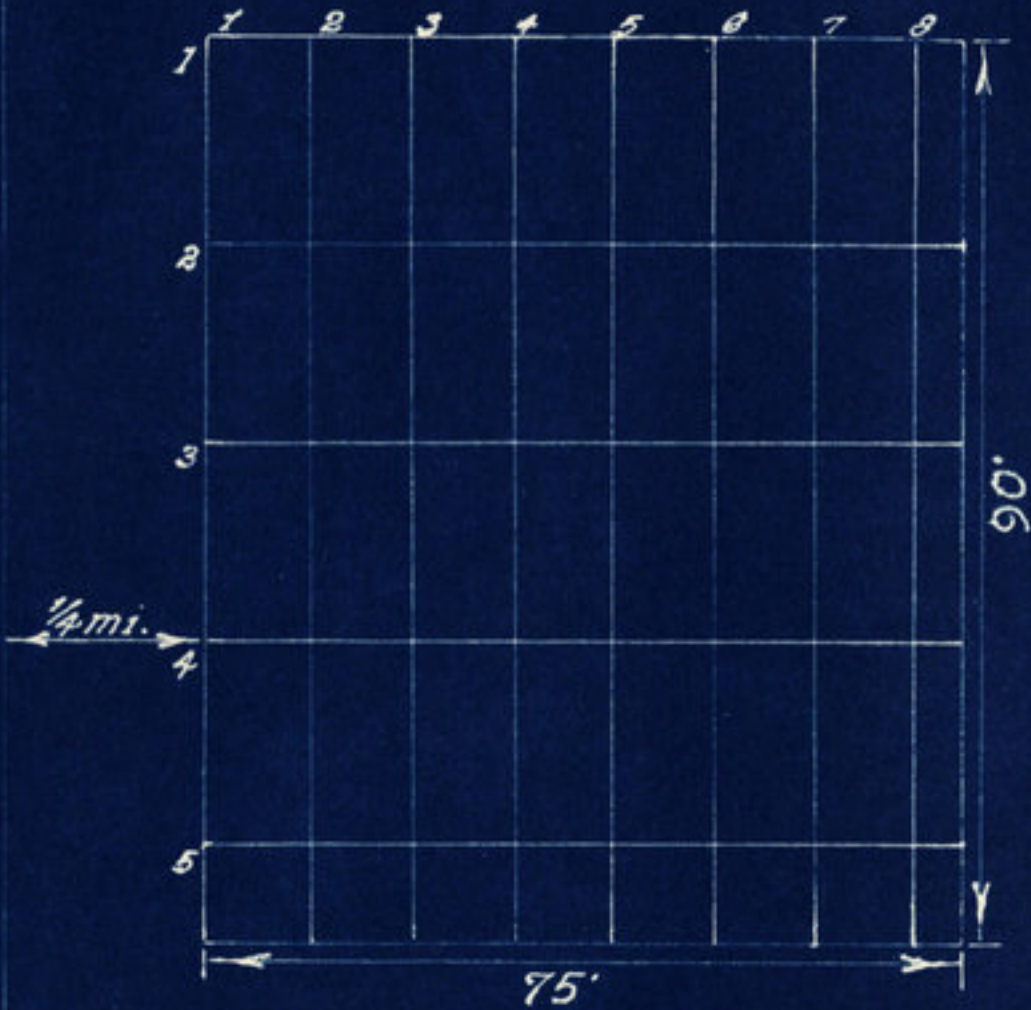
D-1

Cornstalk Cemetery.
Scott Twp. Montgomery County.
Pt. S.W. 1/4, N.E. 1/4, Sect. 34, T. 17N., R. 4W.
Scale 20'-1"
Drawn 1940.



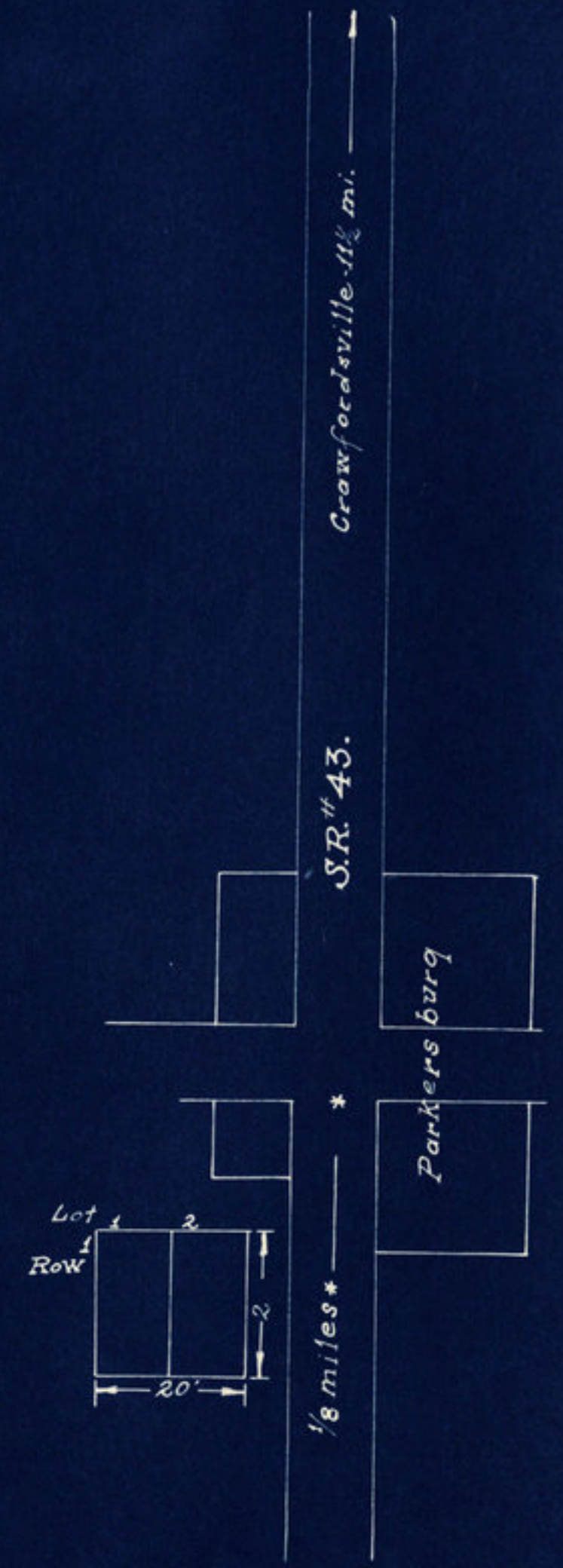
Brethern Church Road

Himes Gravel Road



State Road 234 1.5 miles to Ladoga →

Frantz Cemetery.
Scott Twp. Montgomery County.
NE 1/4, Sect 14, T. 17N. R. 4W.
Scale 20" = 1"
Drawn 1940.



James Cemetery
Scott Twp, Montg. Co.
Pt. Se 1/4, Se 1/4, Sec 31, Twp 17n, R4w.
Scale 20'-1"
Drawn 1940.

N.



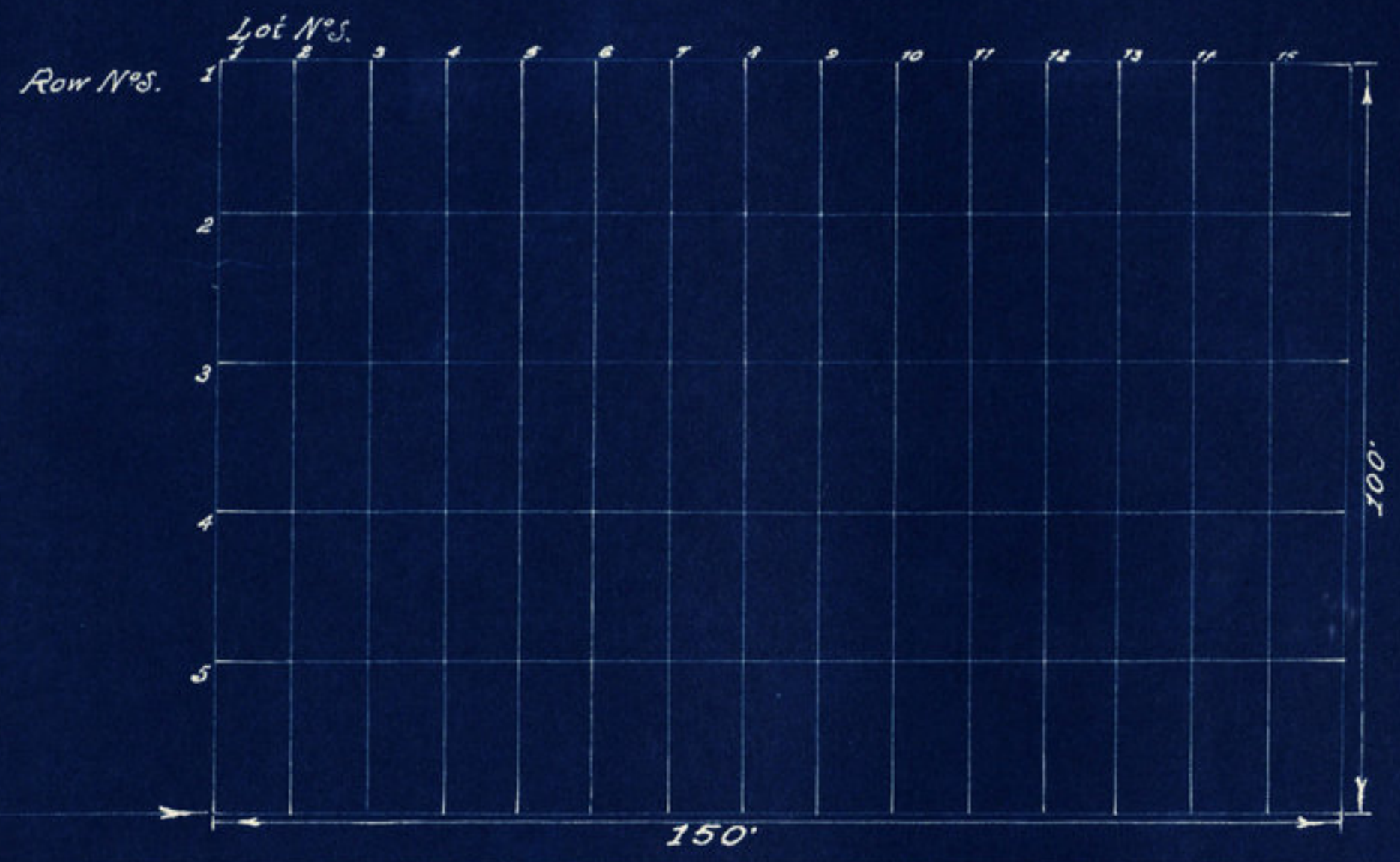
11 miles to Crawfordsville →

Parkers

burg

1/4 mile

Gravel Road

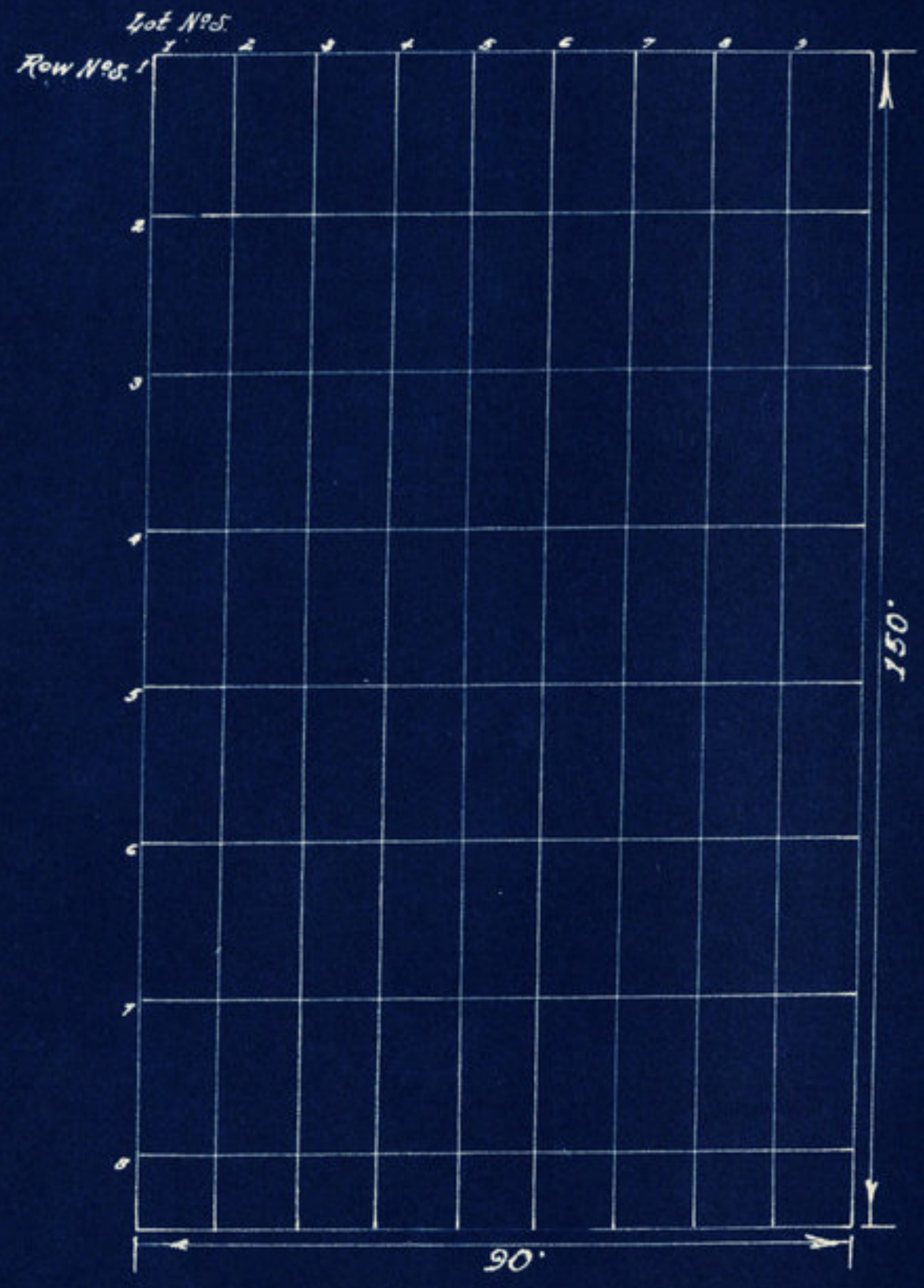


Welch Cemetery.
Scott Twp. Montgomery County
Pt. S.E. 1/4, NW 1/4, Sect. 32, T. 17, R. 4W.
Scale 20'-1"
Drawn 1940.



← New Market 1 mile Black-Top

↑ Crawfordsville 8 miles
State Road 43



Redenbaugh Cemetery
Scott Twp. - Montgomery Co.
Pt. SE 1/4 SE 1/4, Sec. 6, Twp. 17, R. 4W.
Scale 20' = 1"
Drawn 1940.