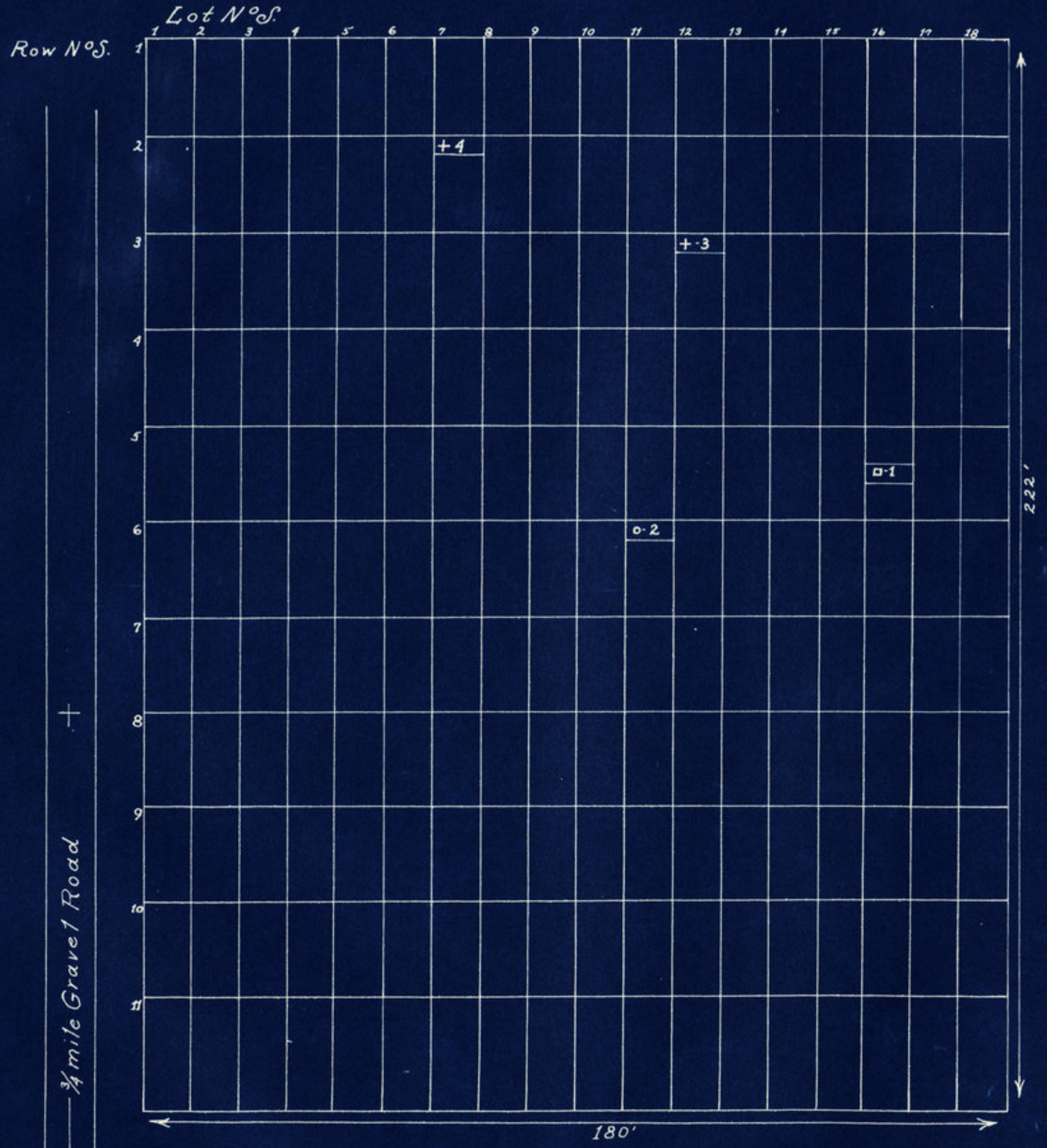




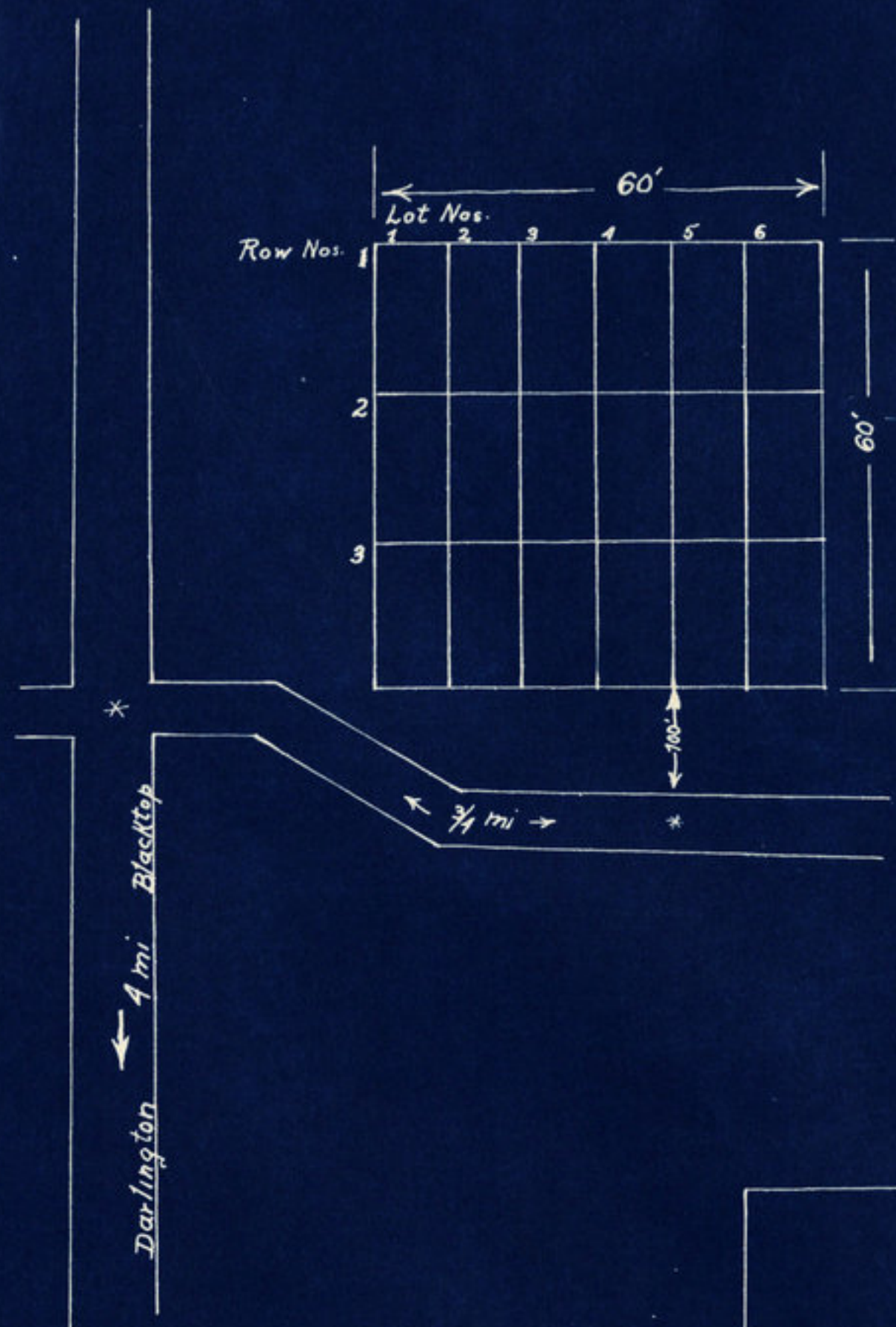
←Darlington 5 miles Darlington - Stockwell Road

←1.5 miles Gravel Road →

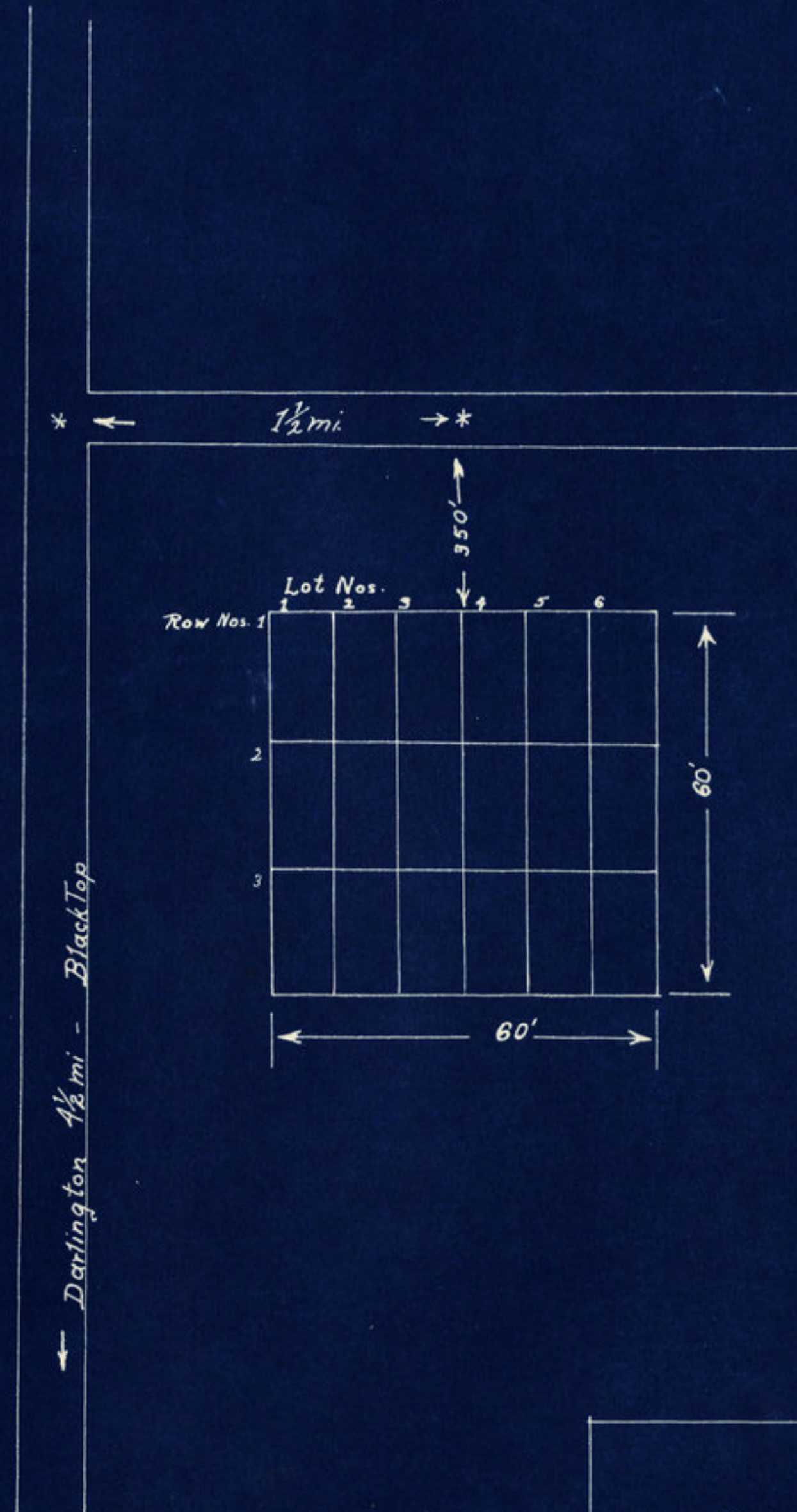
+
3/4 mile Gravel Road
+



Bowers Cemetery
Sugar Creek T. Montgomery County
Pt. NW 1/4, NE 1/4, Sect. 10, T. 20N, R. 3W
Scale 20' - 1"
Drawn 1940



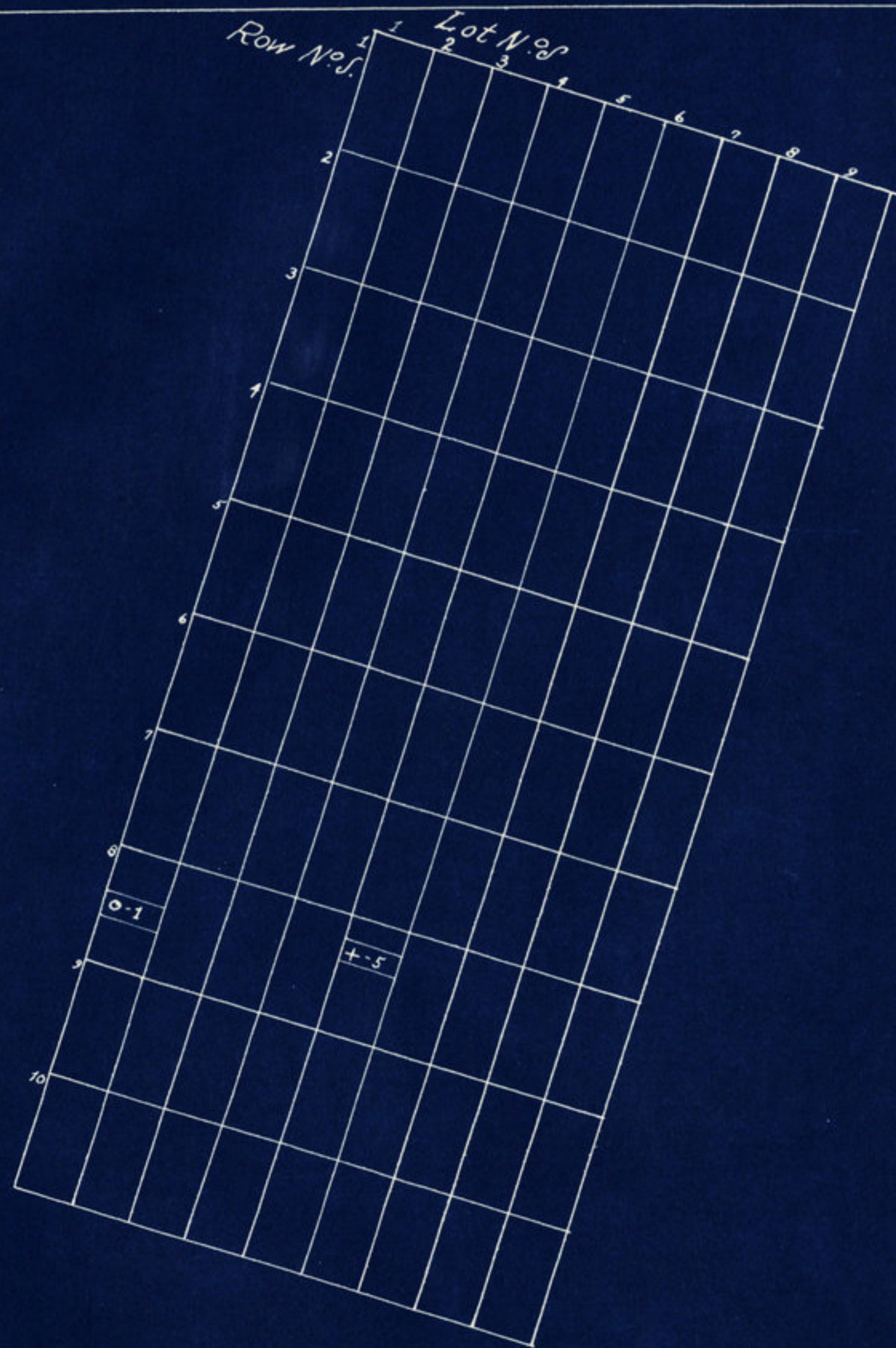
Wolf - Cemetery
 Sugar Creek Twp - Montg. Co.
 Pt NW 1/4 - SE 1/4 Sec 21 - Twp 20 N - Range 3W
 Scale - 1" = 20'
 Drawn 1940



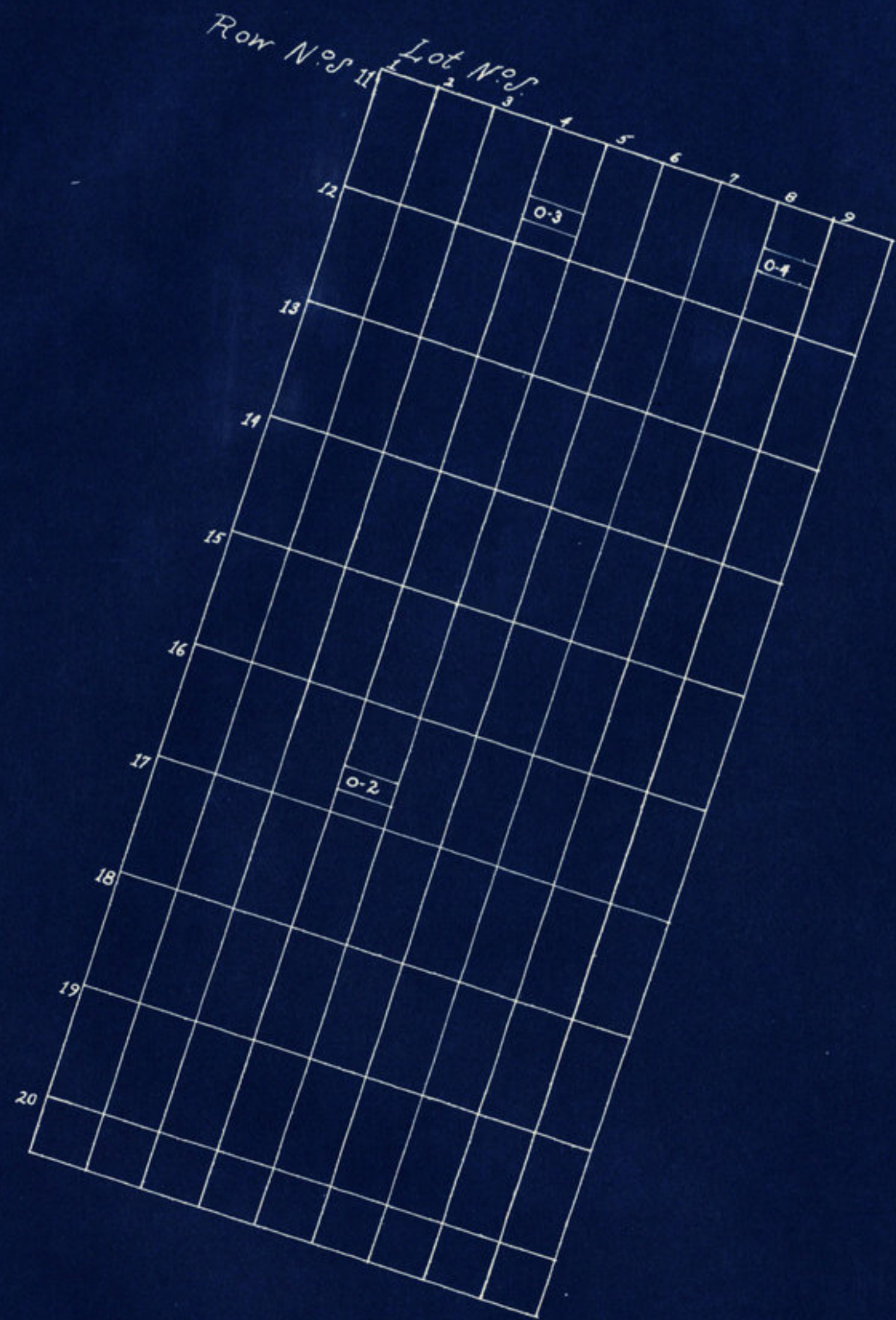
Boyer Cemetery
 Sugar Creek Twp - Montg. Co.
 Pt NW 1/4 - NE 1/4 Sec 22 - Twp 20 N - Range 3W
 Scale 1" = 20'
 Drawn 1940



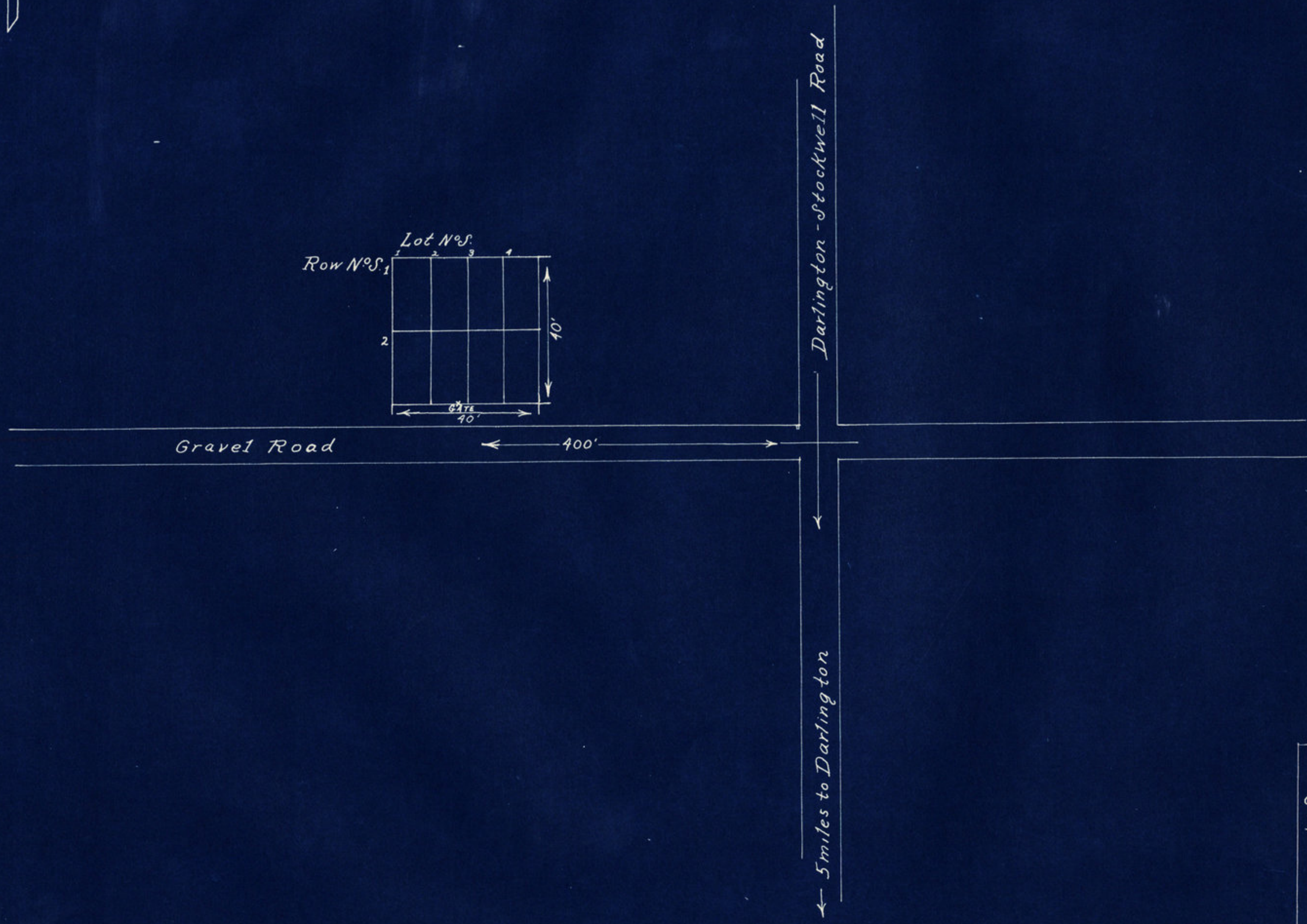
Clouser Cemetery
Sugar Creek T, Montgomery County
Pt. NW 1/4, SE 1/4, Sect. 26, T. 20N, R. 3W
Scale 30' - 1"
Drawn 1940
Sheet 1 of 3.



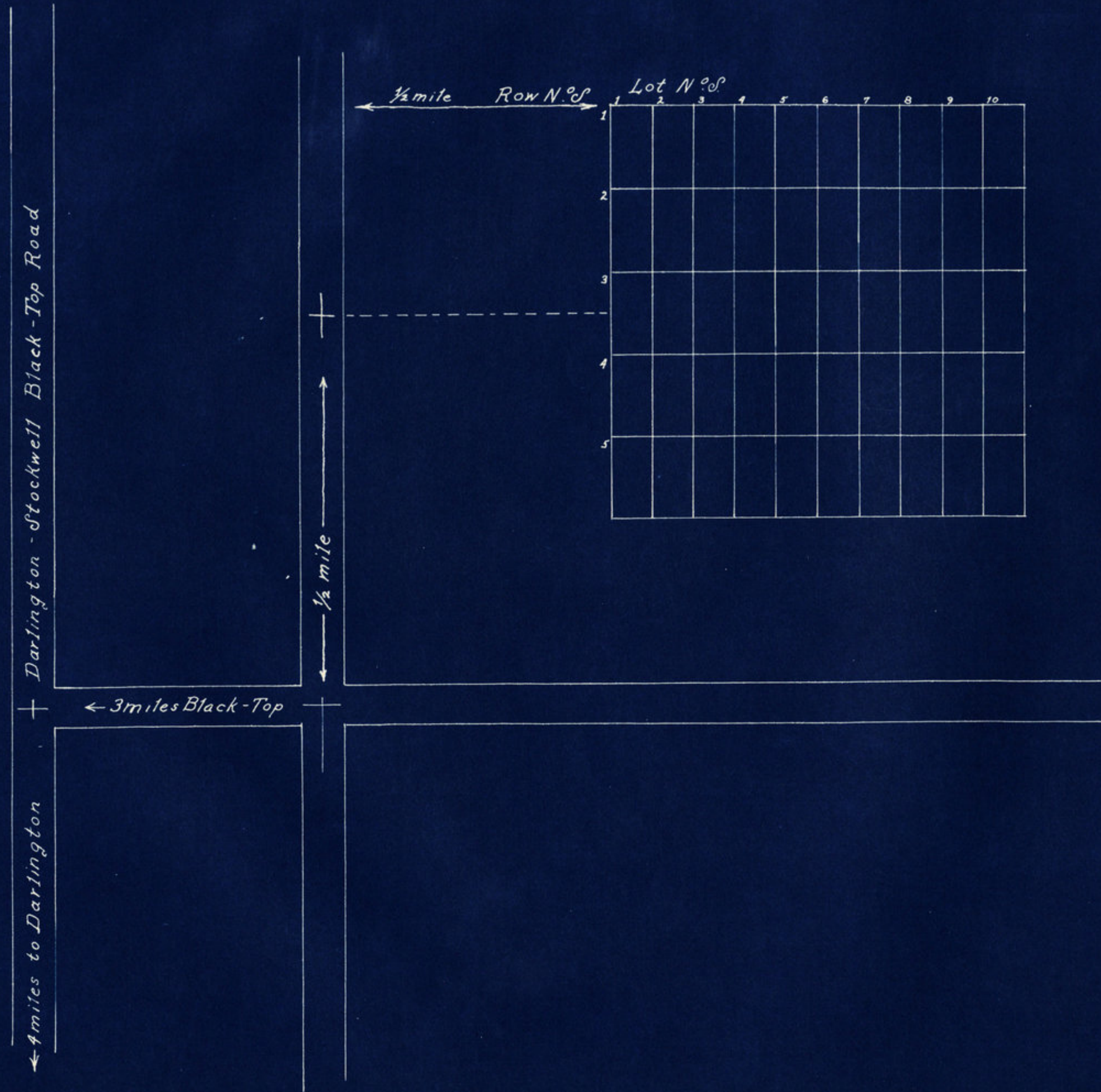
Clower Cemetery
Section 1
Scale 20' - 1"
Drawn 1940
Sheet 2 of 3.



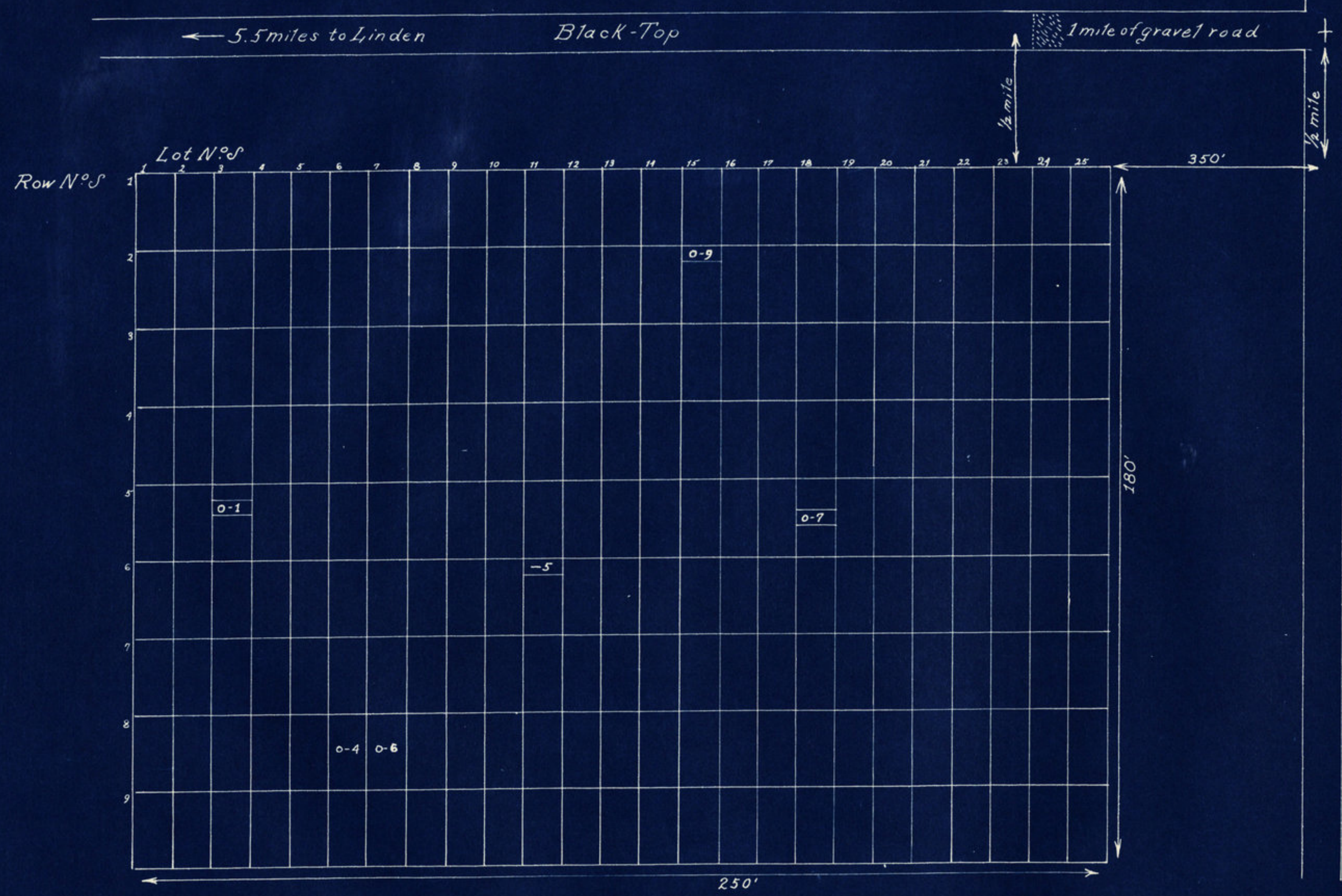
*Clouser Cemetery
Section 2.
Scale 20'-1"
Drawn 1940
Sheet 3 of 3.*



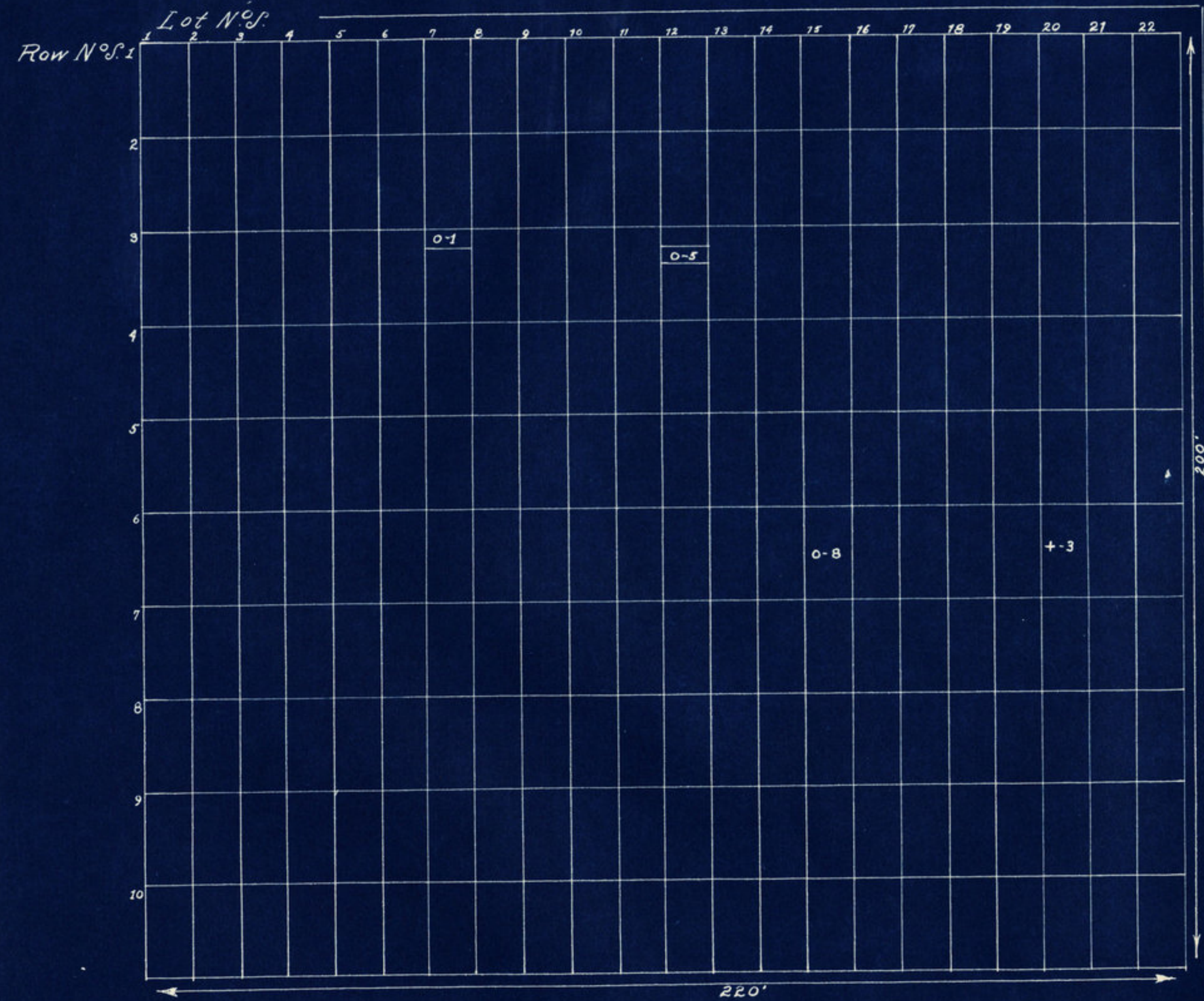
Irvin Cemetery
Sugar Creek T, Montgomery County
Pt. S.E $\frac{1}{4}$, S.E $\frac{1}{4}$, Sect. 8, T20N, R3W
Scale 20' - 1"
Drawn 1940



Old Bethel Cemetery
Sugar Creek T., Montgomery County
Pt. S.E. 1/4, NW 1/4, Sect. 13, T 20 N., R 3 W
Scale 20' - 1"
Drawn 1940



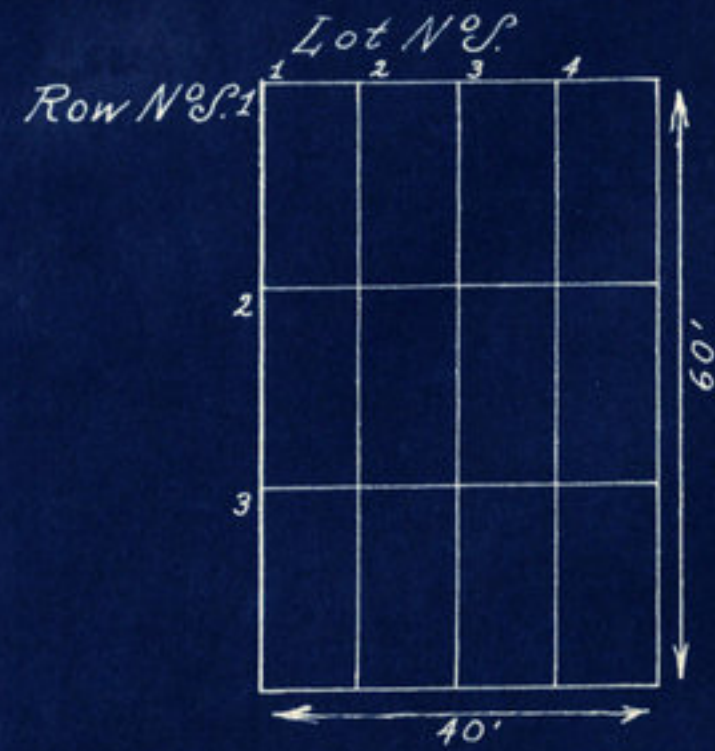
Peterson Cemetery
Sugar Creek T, Montgomery County
Pt. S.E. 1/4, NW 1/4, Sect. 18 T. 20 N., R. 3 W.
Scale 20' - 1"
Drawn 1940



← 1 mile Gravel Road →

← Darlington 1.5 miles Darlington Stockwell Black Top Road

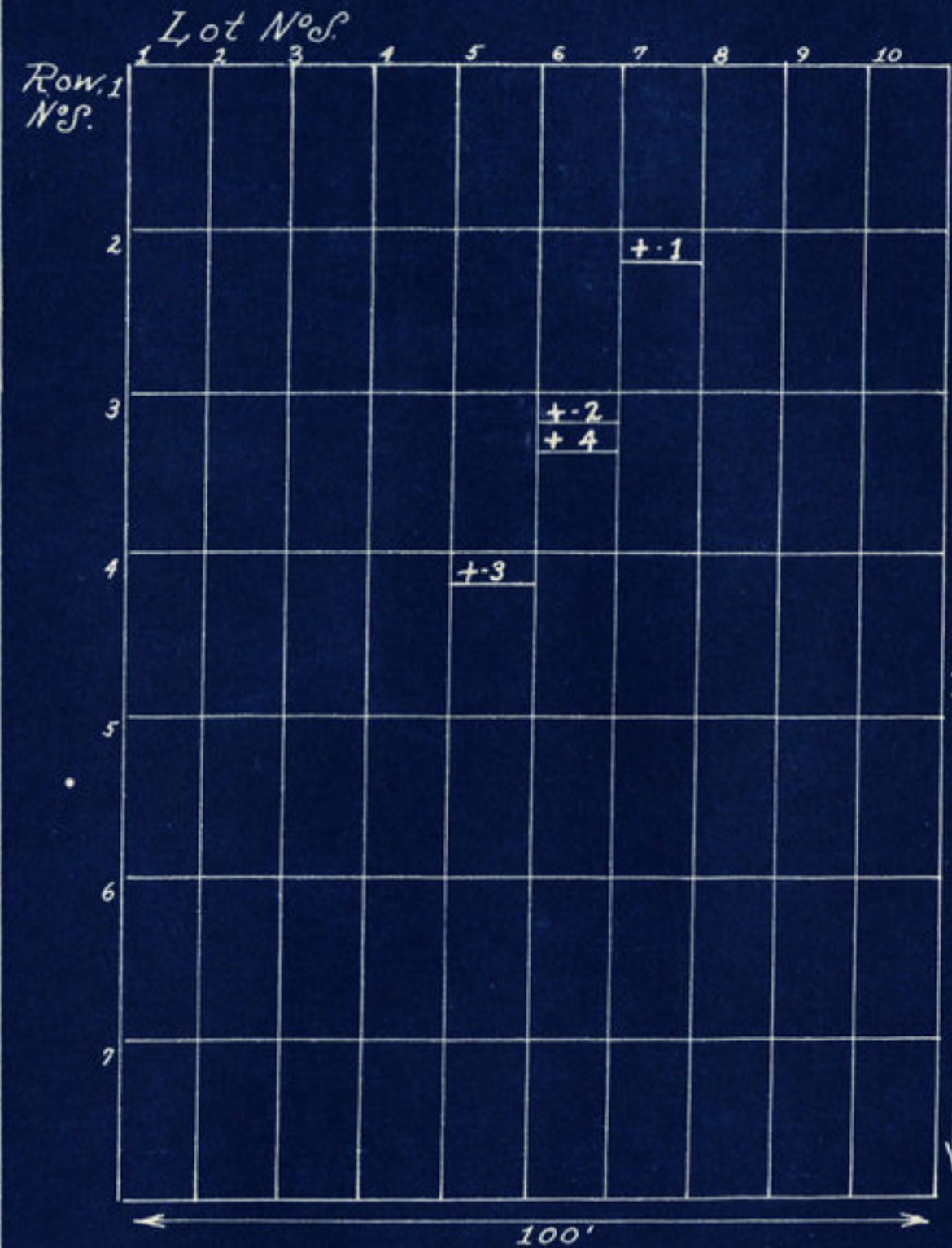
Rice Cemetery
Sugar Creek T., Montgomery County
Pt. N.E. 1/4, S.E. 1/4, Sect. 19, T. 20 N., R. 3 W.
Scale 20' - 1"
Drawn 1940



1/2 mile to gravel road →

Linden-Coffax Black-Top 1 mile of gravel

MSBee Cemetery
 Sugar Creek T, Montgomery County
 Pt. S.W. 1/4, S.W. 1/4 Sect 7, T20N, R 3W.
 Scale 20'-1"
 Drawn 1940



Darlington-Stockwell Road

← 1.5 miles to Darlington

Coffax 1 mile →

Wyant Cemetery
 Sugar Creek T, Montgomery County
 Pt. S.W. 1/4, Sect. 12, Twp 20N, R. 3W.
 Scale 20'-1"
 Drawn 1940