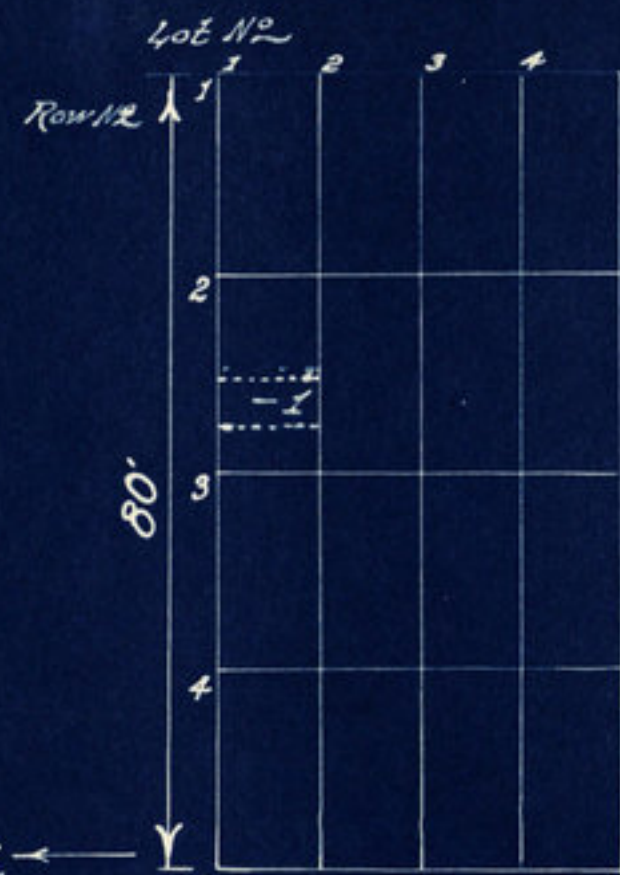




New Ross 1/6 mile →



Whitesville 6 1/4 mi. ←

New Ross-Whitesville Road

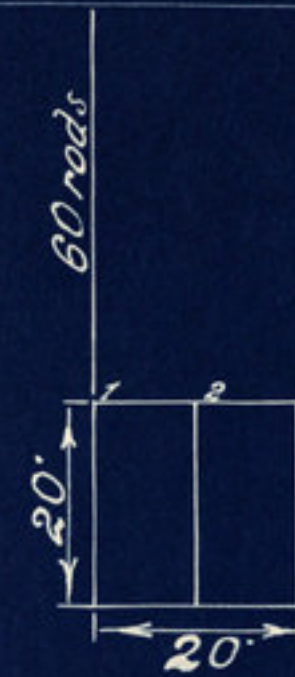
New Ross 1/6 mile

Spry Cemetery.
Walnut Twp. Montgomery County.
N.W. 1/4, N.E. 1/4, Sect. 35, Twp. 18, Range 3 W.
Scale 1" = 20'
Drawn 1940.

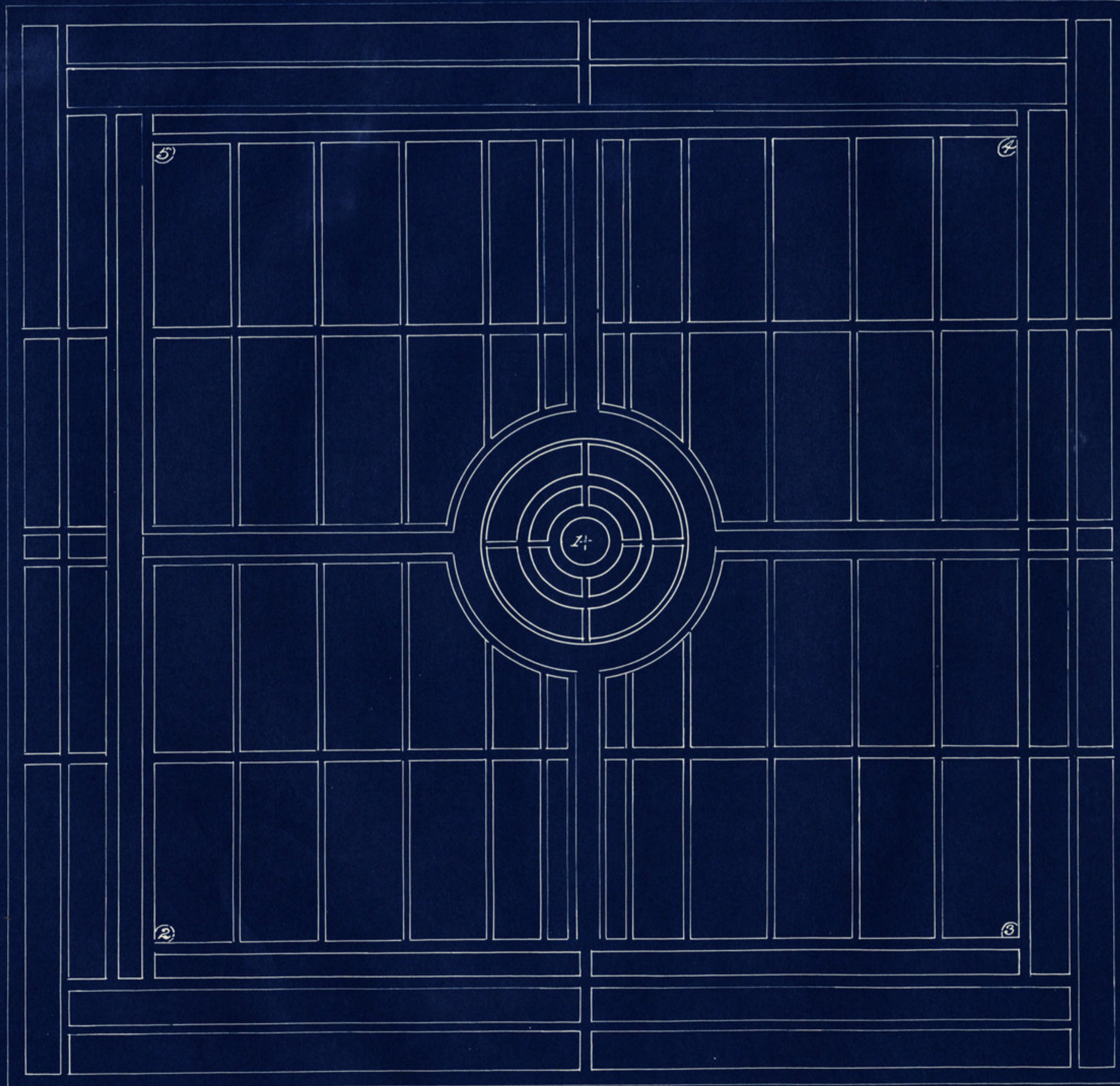


← Mace 1 1/4 mile

Finch Road



Galiel Crane Cemetery.
Walnut Twp. Montgomery County.
E. 1/2, Sect. 17, Twp. 18, Range 3 W.
Scale 1" = 20'
Drawn 1940.

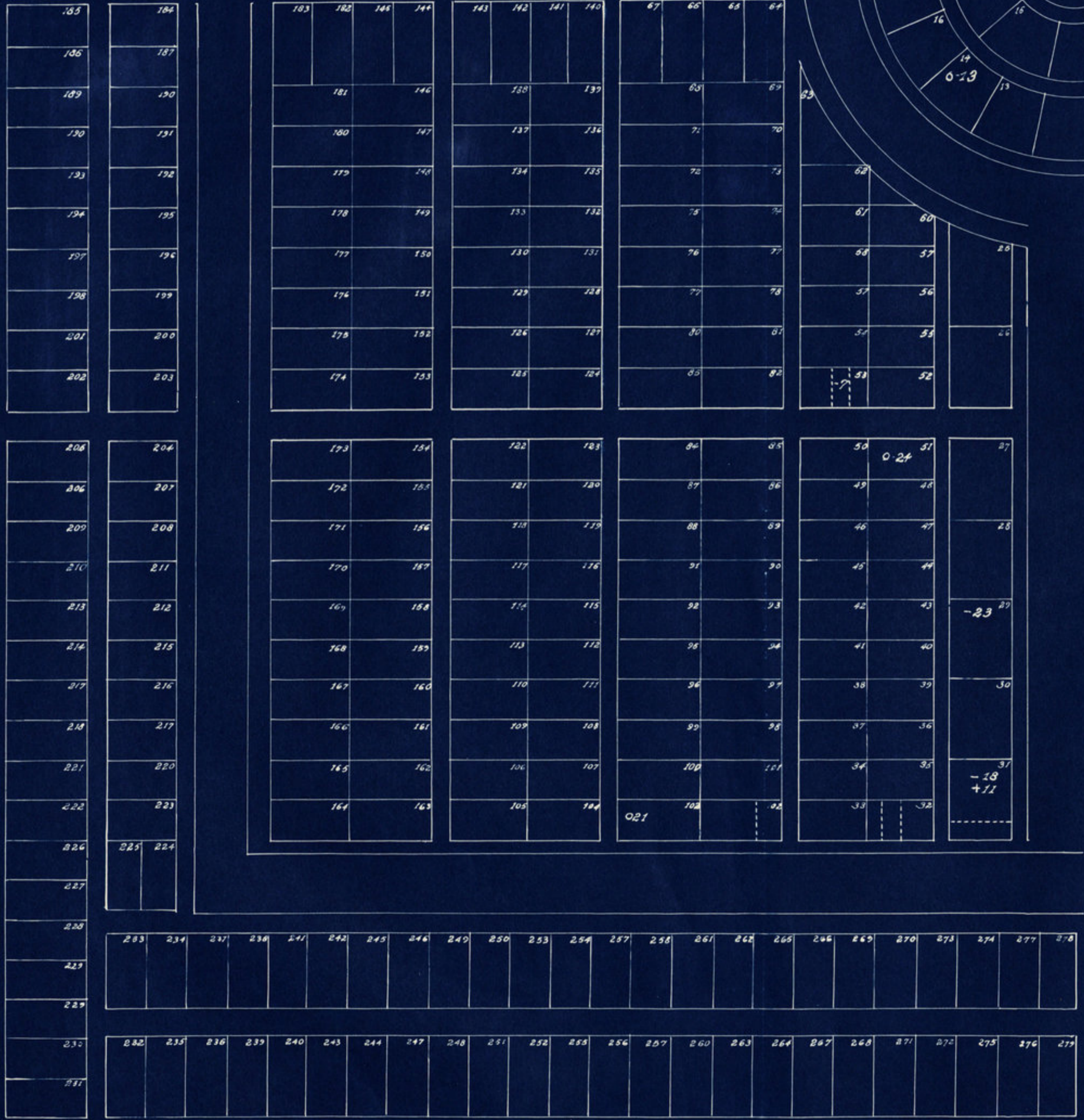


New Ross 1/2 mile →

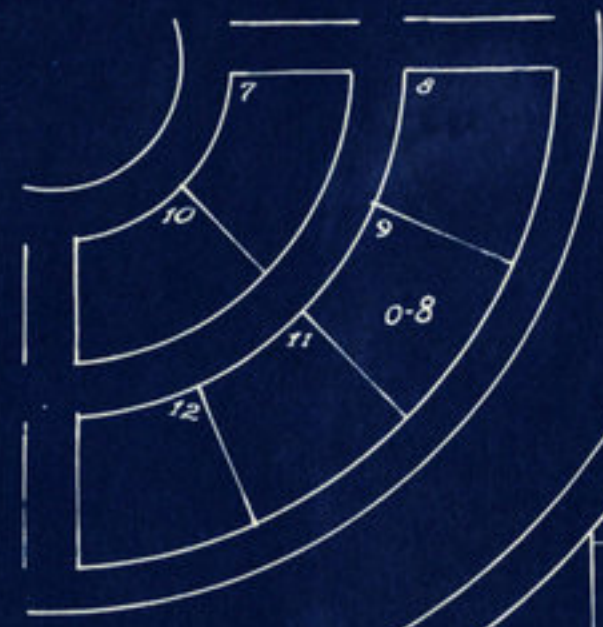
Ladoga-New Ross Road

I.O.O.F. Cemetery.
Walnut Twp. Montgomery County.
SE 1/4, Sect. 35, Twp. 18, Range 3.
Scale 40' = 1"
Drawn 1940.

Sheet 1 of 5



Block 2. I.O.O.F. Cemetery
Walnut Twp. Montgomery County.
Scale 20' = 1"
Drawn 1940.



528	529	530	468	469	442	443	388	389	375	374	373	372												
-17	527	526	467	466	441	440	391	390	-27															
523	521	525	471	470	438	439	392	393																
522	521	521	472	473	437	436	393	394																
519	519	520	476	477	434	435	396	397																
-26	517	516	479	478	433	432	399	398																
513	514	515	480	481	430	431	400	401																
508	512	511	483	482	429	428	403	402																
503	509	510	484	485	426	429	404	405																
498	507	506	487	486	425	424	407	406																
	504	505	488	489	422	423	408	409																
	502	501	491	490	421	420	411	410																
	-15	499	492	493	418	419	412	413																
	497	496	495	-1	417	416	415	414																
281	282	285	286	289	290	291	294	297	298	301	302	305	306	309	310	313	314	317	318	321	322	325	326	
-4		0-20			-5																			
280	283	284	287	288	291	292	295	296	299	300	303	304	307	308	311	312	315	316	319	320	323	324	327	
-25																								

Block 3.
 I.O.O.F. Cemetery.
 Walnut Twp Montgomery County.
 Scale 20' = 1"
 Drawn 1940.

Sheet 3 of 5



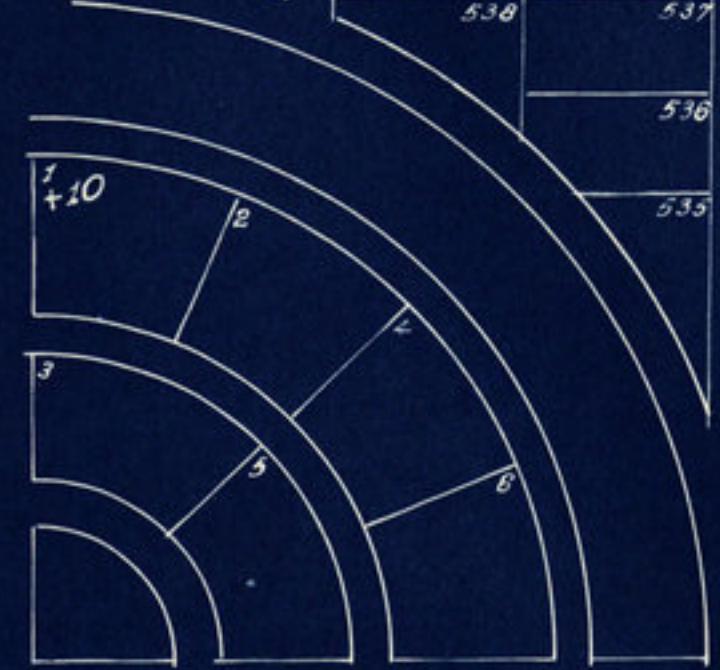
789	786	785	782	781	778	777	774	773	770	769	766	765	762	761	758	757	754	753	750	749	746	745	742
788	787	784	783	780	779	776	775	772	771	768	767	764	763	760	759	756	755	752	751	748	747	744	743

570	571	572	574	575	652	653	654	655
	569	573	577	576	651	650	657	656
564	568	567	578	579	648	649	658	659
	565	566	581	580	647	646	661	660
563	562	561	582	583	644	645	662	663
	557	560	585	584	643	642	665	664
554	558	559	586	587	640	641	668	667
	555	556	589	588	639	638	669	668
553	552	551	590	591	636	637	670	671
	549	550	593	592	635	634	673	672

544	548	547	594	595	632	633	674	675
	545	546	597	598	631	630	677	676
543	542	541	598	597	628	629	678	679
	539	540	601	600	627	626	681	680
	538	537	602	603	624	625	682	683
		536	605	604	623	622	685	684
		535	606	607	620	621	686	687
			609	608	619	618	684	688
			610	611	613	613	690	691
					614	615	616	617
							692	693

736	735
732	738
731	730
728	729
727	726
724	725
723	722
720	721
719	718
716	717
715	714

712	713
711	710
708	709
707	706
703	704
702	705
701	702
699	701
698	698
694	695
696	697



Block 4. I.O.O.F. Cemetery.
Walnut Twp. Montgomery County.
Scale 20' = 1"
Drawn 1940.

Sheet 4 of 5



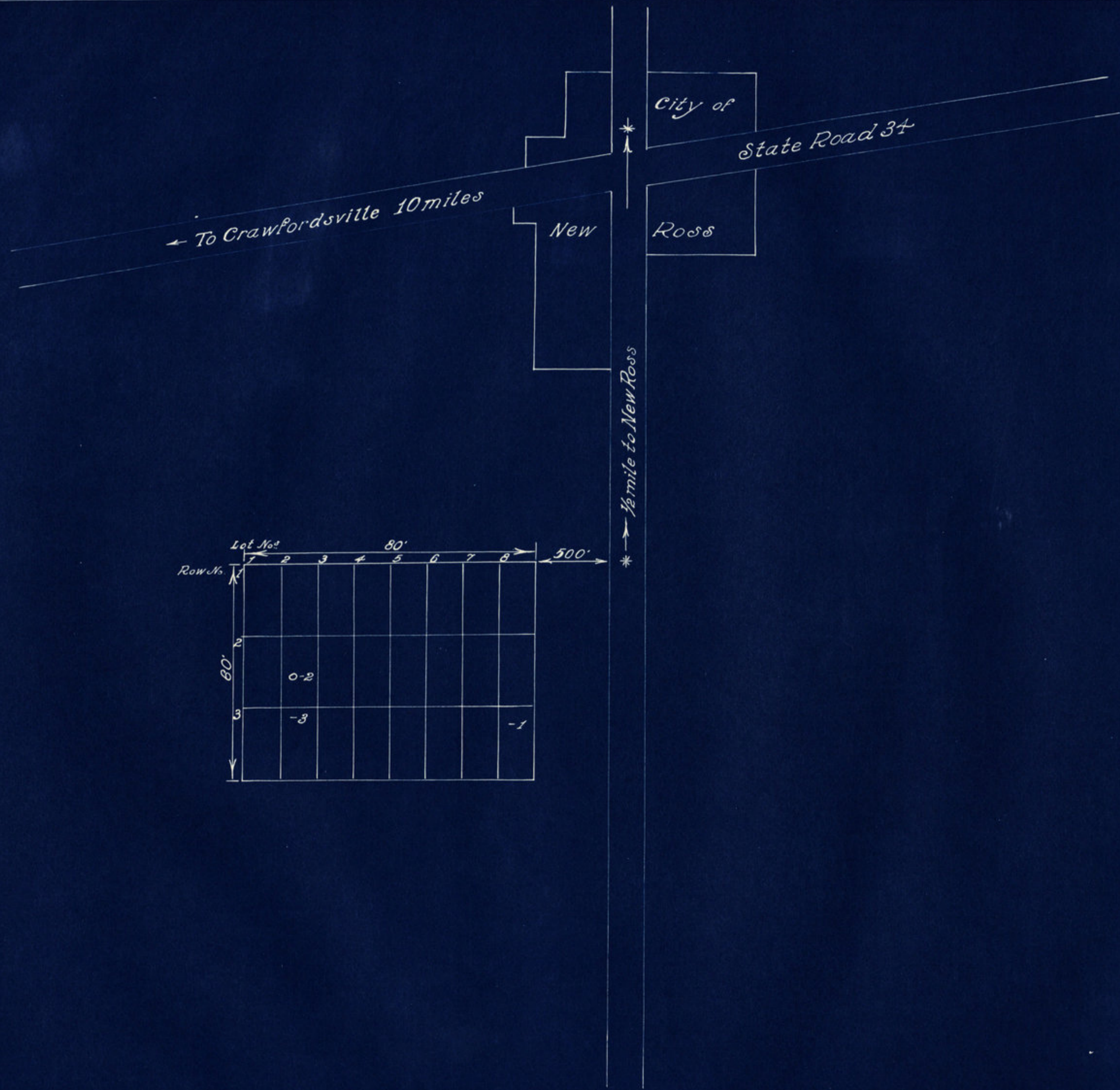
838	837	834	833	830	829	826	825	822	821	818	817	814	813	810	809	806	805	802	801	798	797	794	793	795
839																								
840	836	835	832	831	828	827	824	823	820	819	816	815	812	811	808	807	804	803	800	799	796	795	792	791
841																								
842																								
843	844	845																						
847	846																							
848	849																							
851	850																							
852	853																							
855	854																							
856	857																							
859	858																							
860	861																							
863	862																							
867	865																							
867	866																							
868	867																							
871	870																							
872	873																							
875	874																							
876	877																							
879	878																							
880	881																							
883	882																							
884	885																							

927	926	928	929	1007	1006	1008	1009	1010
924	925	931	930	1004	1005	1012	1011	
923	922	932	933	1003	1002	1013	1014	1015
920	921	935	934	1000	1001	1017	1018	
919	918	936	937	999	998	1018	1019	1020
916	917	939	938	996	997	1022	1021	
915	914	940	941	995	994	1023	1024	1025
912	913	943	942	992	993	1027	1028	
911	910	944	945	991	990	1028	1029	1030
908	909	947	946	988	989	1032	1031	

907	906	948	949	987	986	1033	1034	1035
904	905	950	950	984	985	1035	1036	
903	902	952	953	983	982	1038	1039	1040
900	901	955	954	980	981	1042	1041	
899	898	956	957	979	978	1043	1044	
896	897	959	958	976	977	1045		
895	894	960	961	975	974			
892	893	963	962	972	973			
888	889	890	891	964	965	966	967	968
				968	969	970	971	

19	20	21	22	23	24
----	----	----	----	----	----

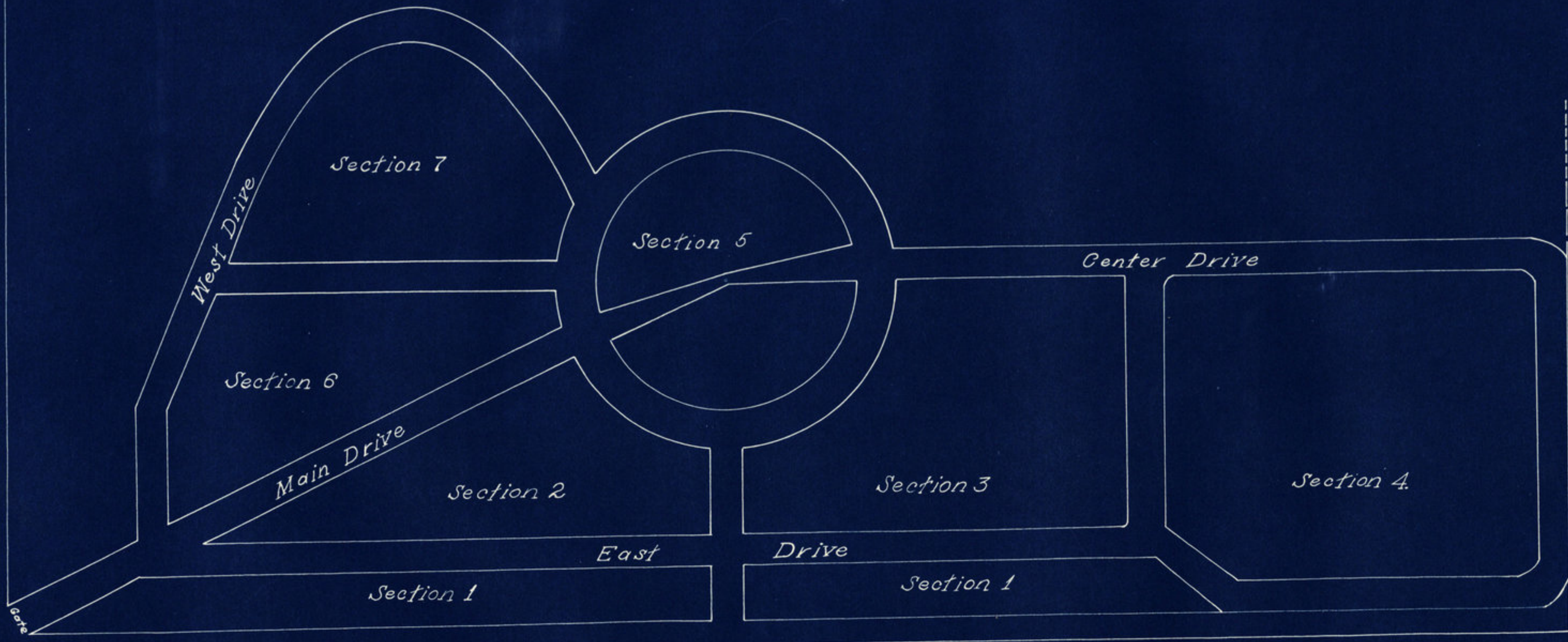
Block 5. I.O.O.F. Cemetery.
 Walnut Twp. Montgomery County.
 Scale 20' = 1"
 Drawn 1940.



Jessee Cemetery.
Walnut Twp. Montgomery County.
Pt. S.E. 1/4, Sect 35, Twp. 18N., R. 3W.
Scale 20' = 1"
Drawn 1940.



S.R. #34. 5 miles to Cranfordsville



Town of Mace

Knights of Pythias Cemetery
 Walnut Twp- Montgomery Co.
 Sect 7, Twp 18, Range 3W.
 Scale-40'-1"

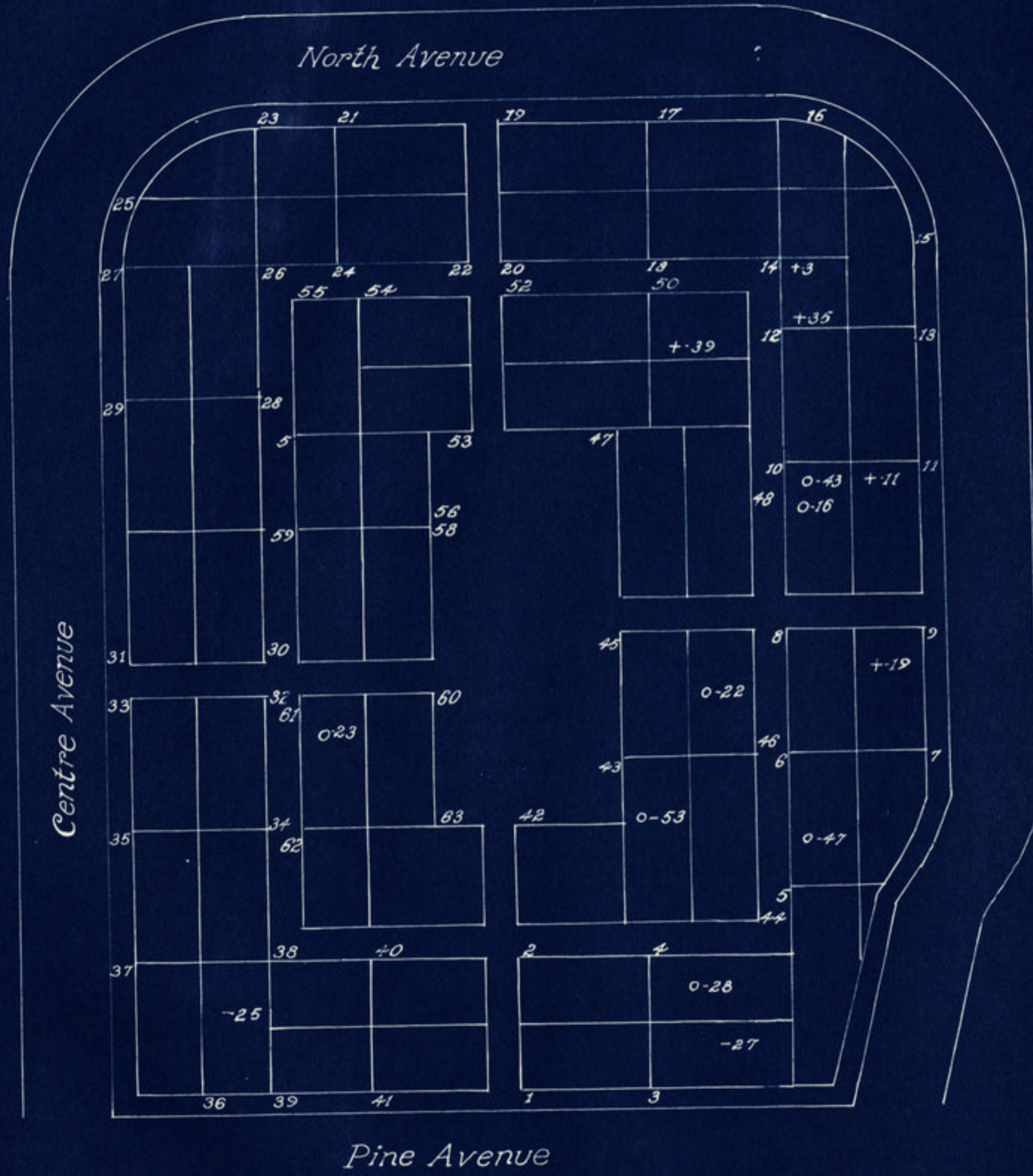
Sheet 1 of 7



Section 3, K. of P. Cemetery.
Walnut Twp. Montgomery County.
Scale 20' = 1"
Drawn 1940.

Sheet 3 of 7

N



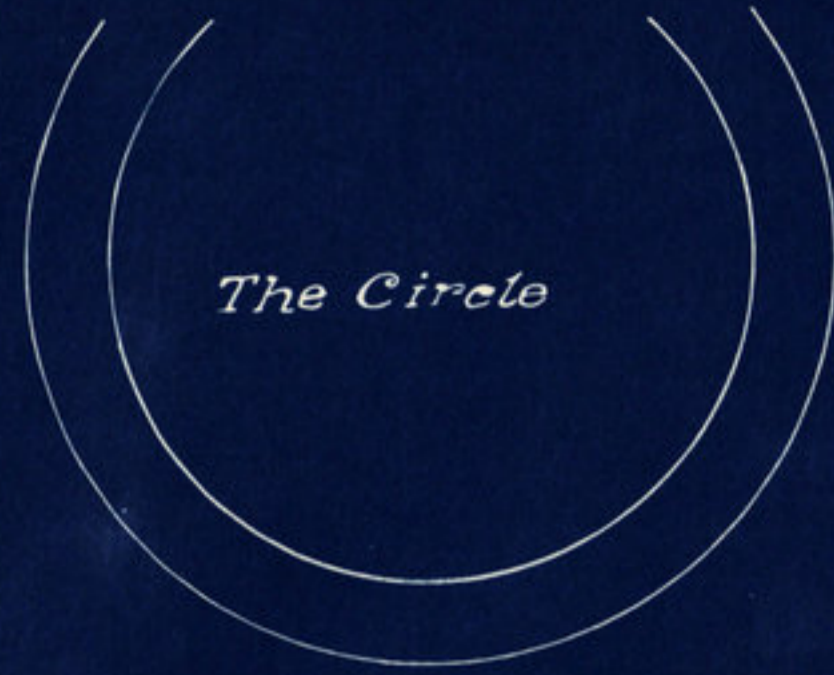
Section 4, K. of P. Cemetery.
 Walnut Twp. Montgomery County.
 Scale 20' = 1"
 Drawn 1940.

Sheet 4 of 7



*Section 5, K. of P. Cemetery.
Walnut Twp., Montgomery County.
Scale 20' = 1"
Drawn 1940.*

Sheet 5 of 7

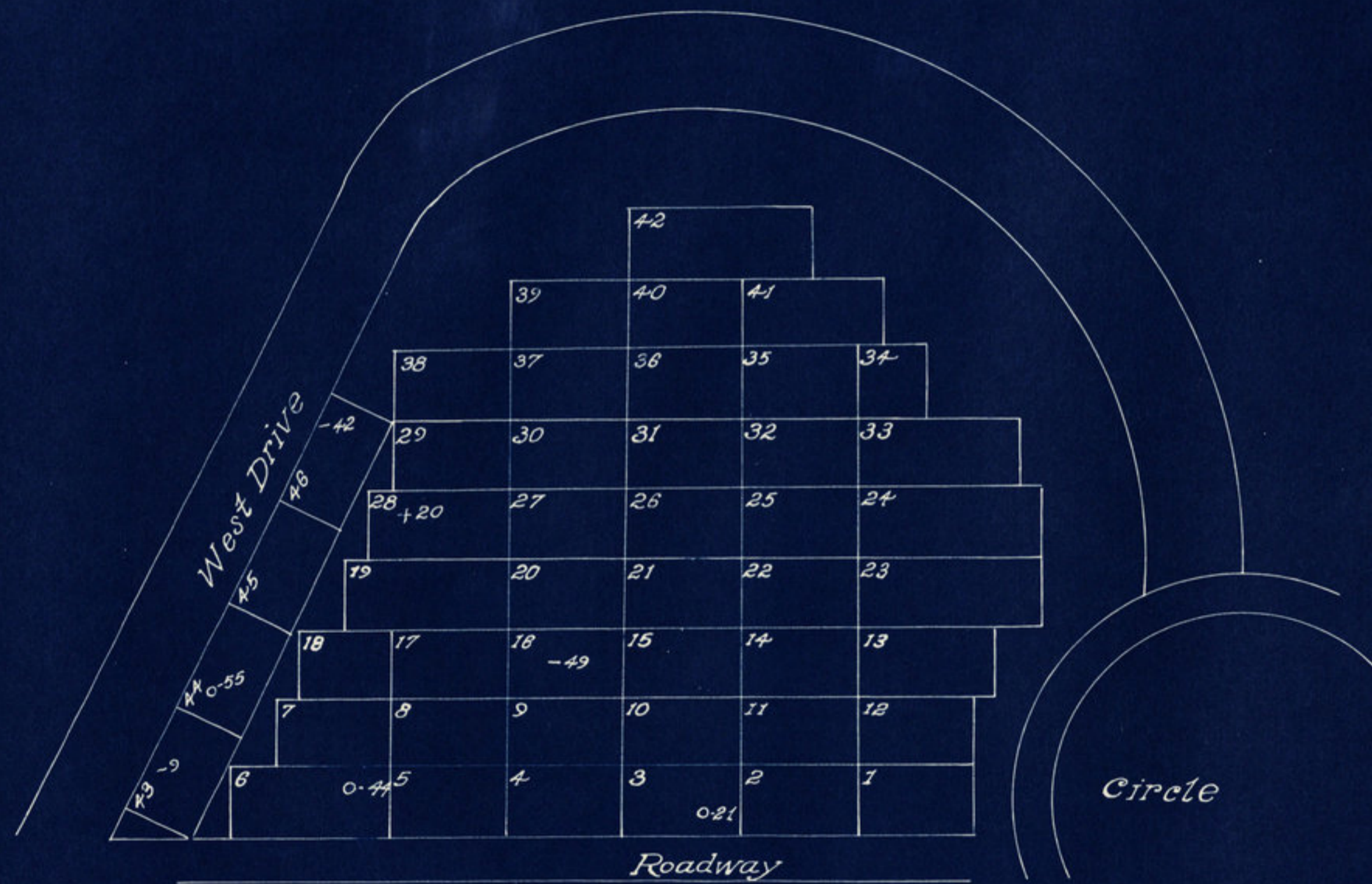


The Circle



*Section 6, K. & P. Cemetery.
Walnut Twp. Montgomery County.
Scale 20' = 1"
Drawn 1940.*

Sheet 6 of 7



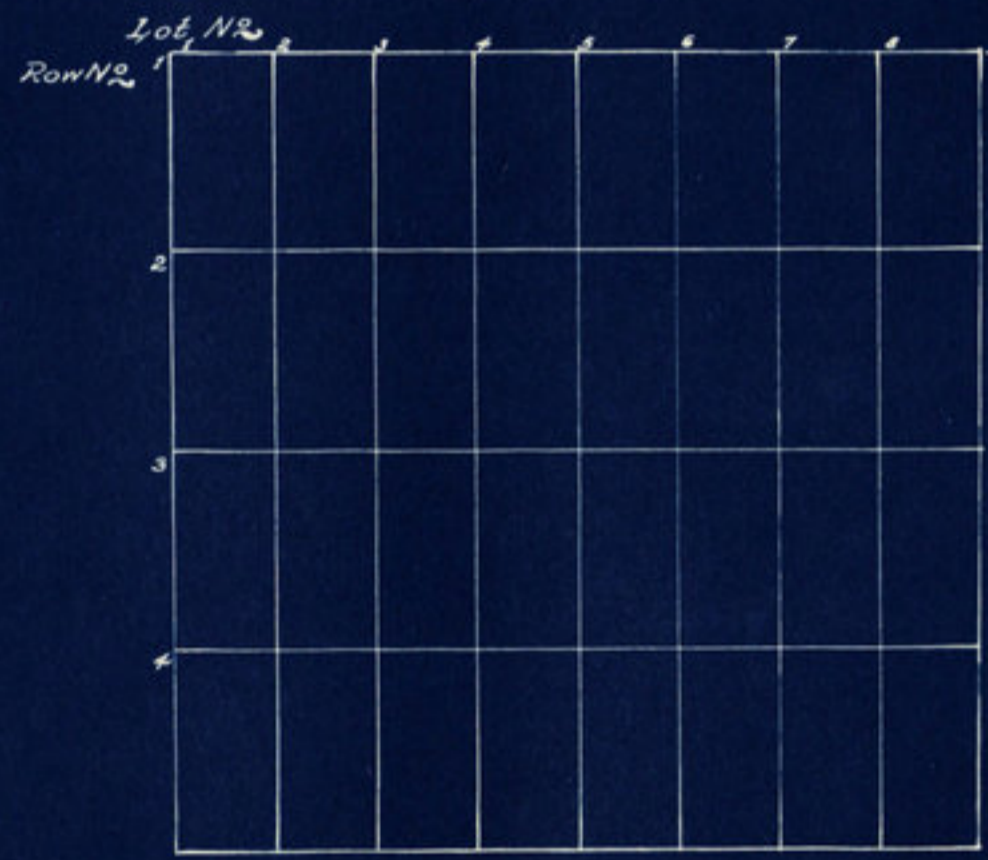
Section 7, K of P Cemetery.
Walnut Twp, Montgomery County.
Scale 20' = 1"
Drawn 1940.

Sheet 7 of 7.



Beckville $1\frac{1}{4}$ mile \rightarrow Finch Road

Appx. $\frac{1}{4}$ mile

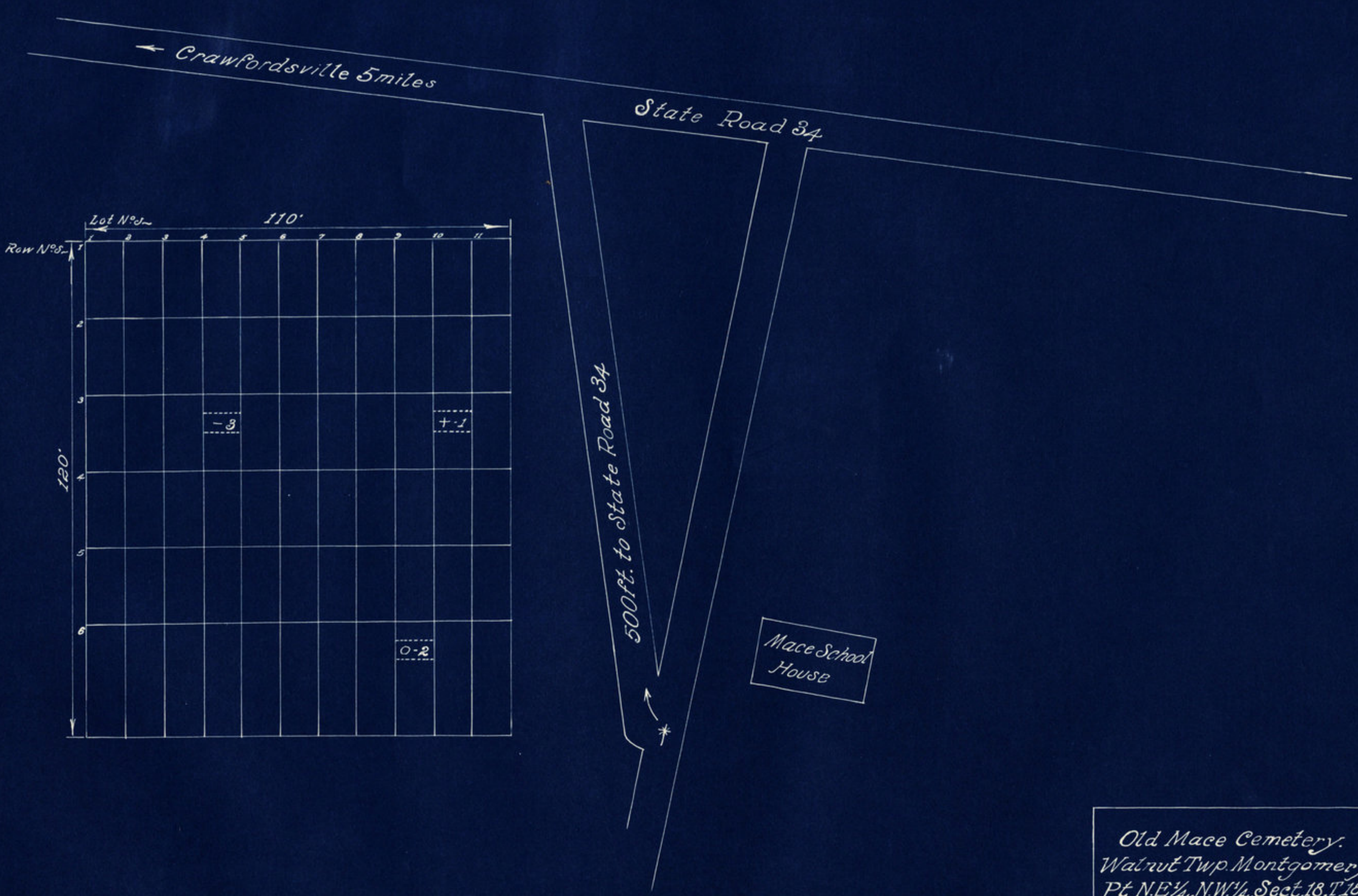


60 rods

\leftarrow Linnsburg

State Road 34

Lockridge Cemetery.
Walnut Twp. Montgomery County.
 $W\frac{1}{2}$, Sect. 15, Twp 18, Range 3W.
Scale 20' = 1"
Drawn 1940.



Old Mace Cemetery.
Walnut Twp. Montgomery County.
Pt. N.E. 1/4, N.W. 1/4, Sect. 18, T. 18, Range 3W.
Scale 20' = 1"
Drawn 1940.



Section 1.

Section 2.

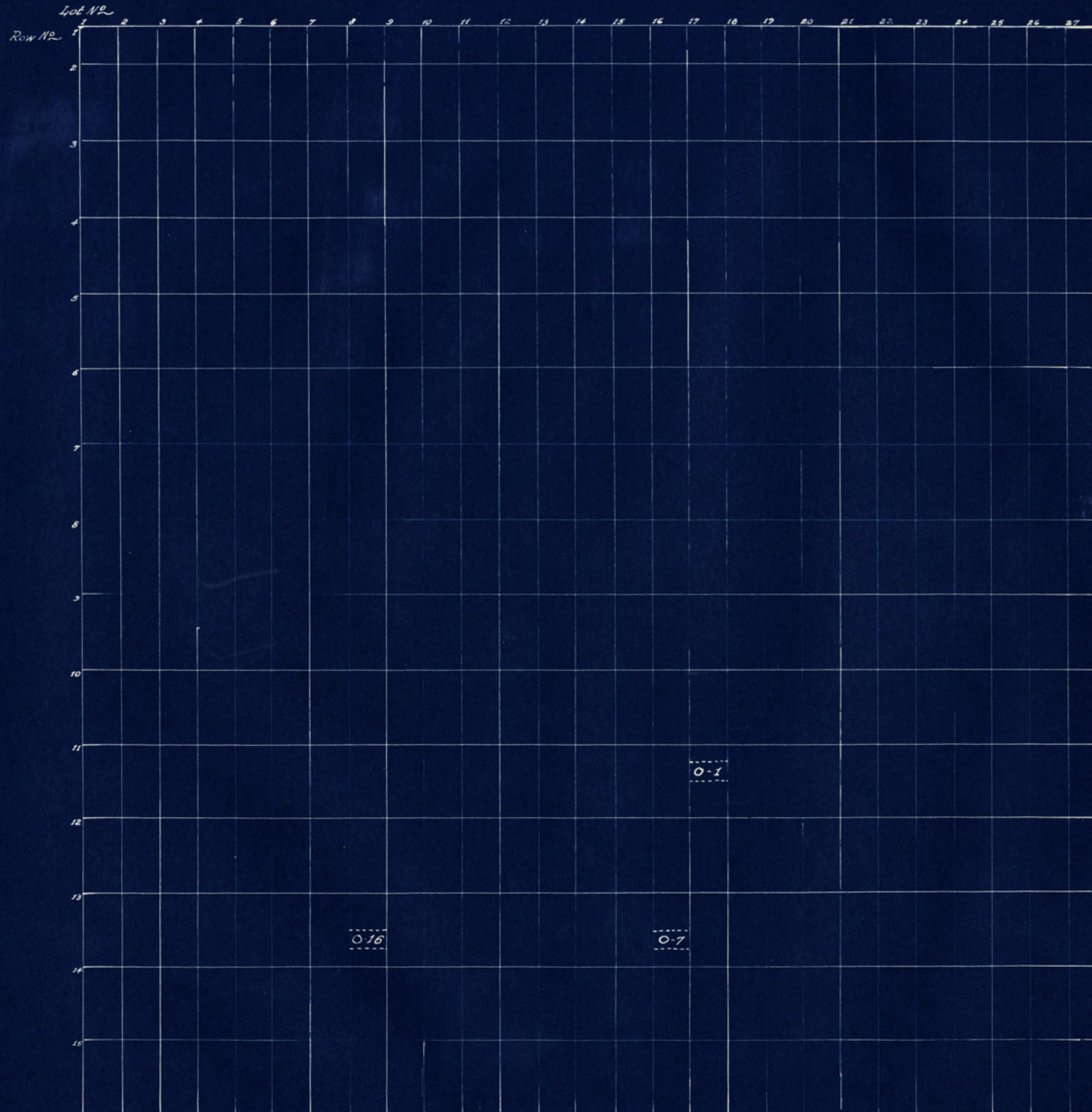
$\frac{15}{16}$

570'

270'

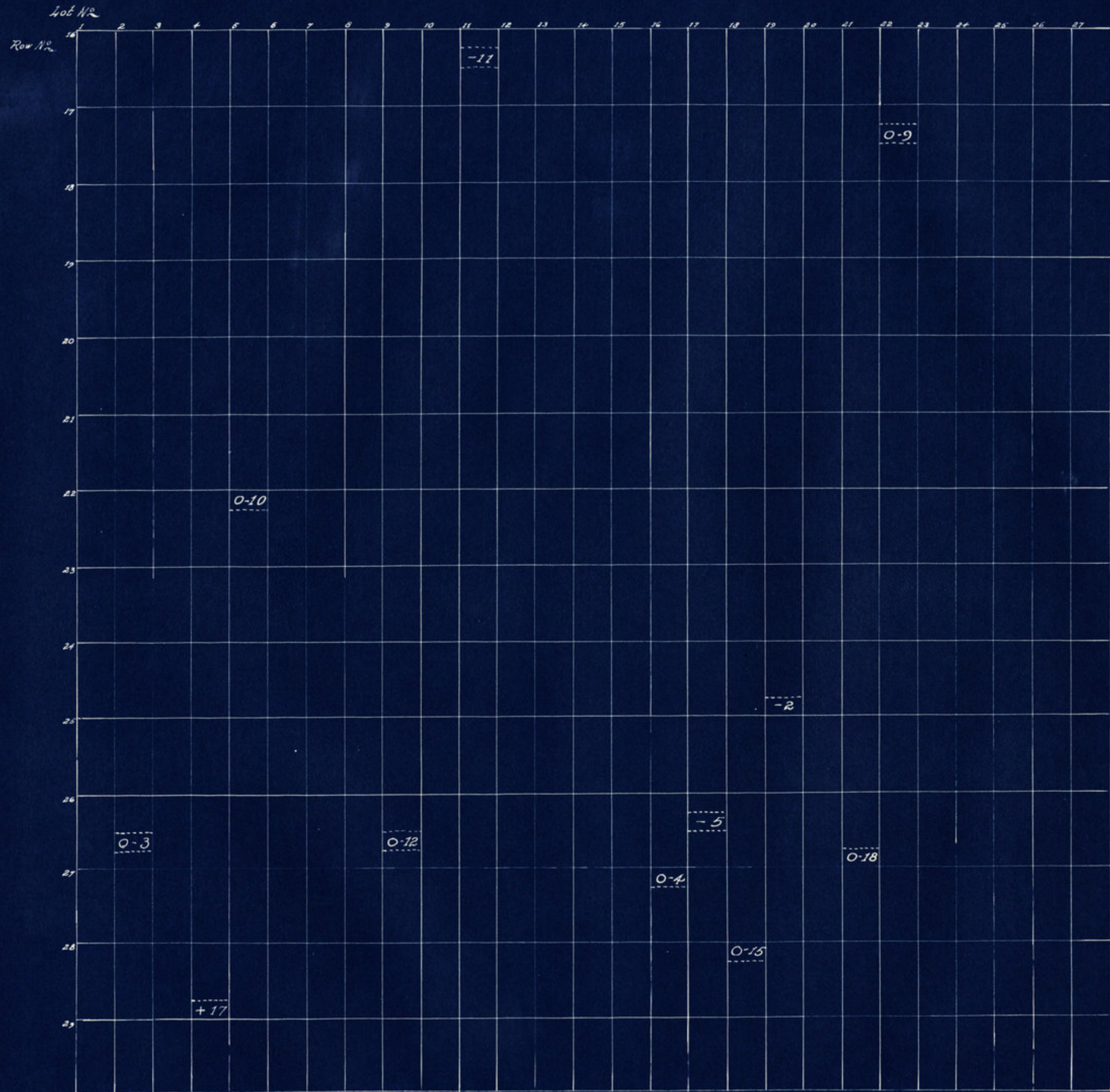
Beckville 1 mile →

Pisgah Cemetery.
Walnut Twp. Montgomery County.
Pt. S.W. ¼, Sect. 15, Twp. 18, Range 3W.
Scale 40' = 1'
Drawn 1940.
Sheet 1 of 3



*Pisgah Cemetery.
Section 1.
Walnut Twp. Montgomery Co.
Scale 20' = 1"
Drawn 1940.*

Sheet 2 of 3.



Pisgah Cemetery.
Section 2.
Walnut T. Montgomery Co.
Scale 20' = 1"
Drawn 1940.



Row No.	1	2	3	4	5	6	7	8	9
1									
2									
3									
4									
5									
6									
7									
8									

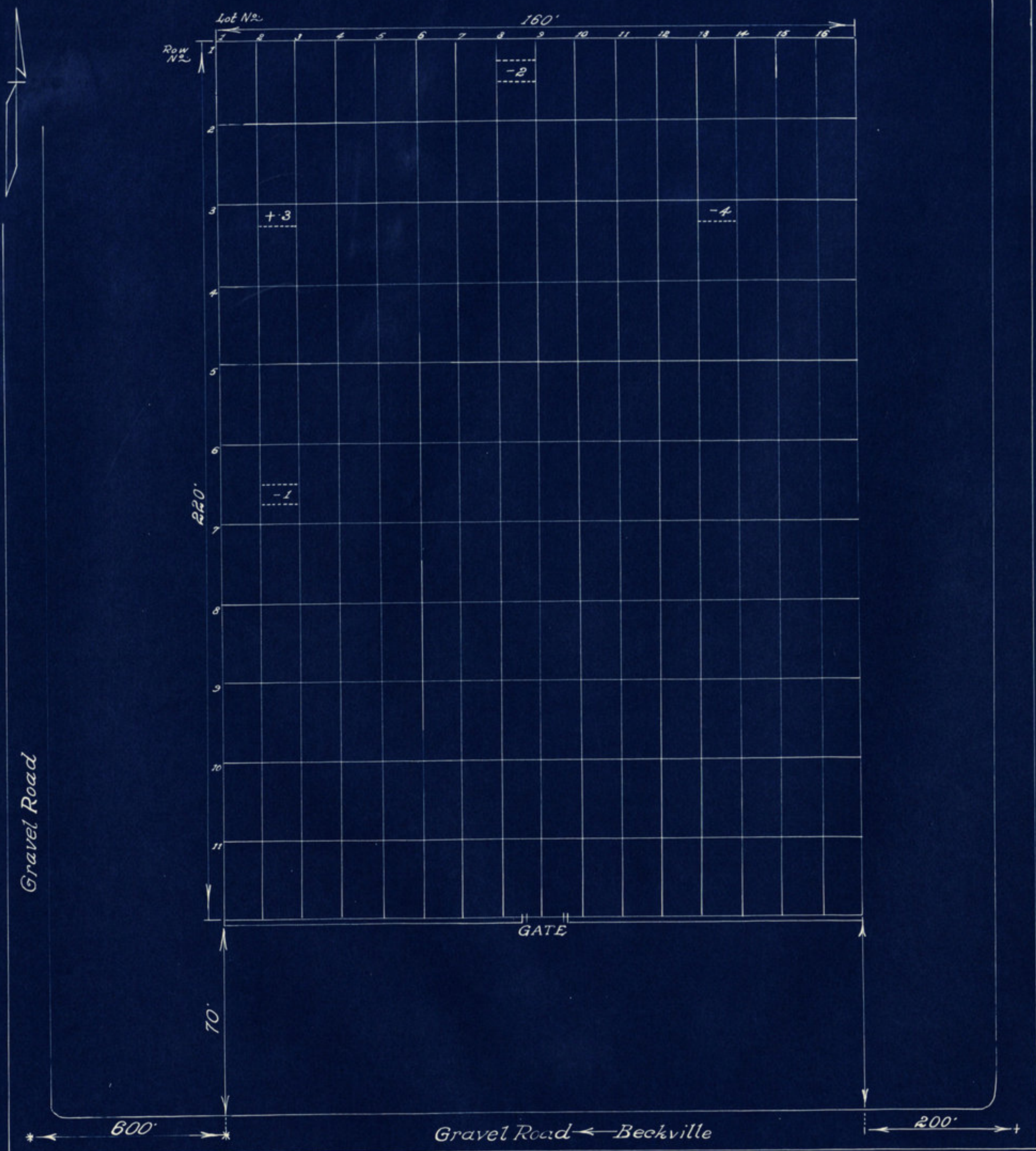
Gravel Road
3/4 miles Mace
BRIDGE

← 5 miles to Crawfordsville
State Road 34

MACE

Parson Cemetery.
Walnut Twp Montgomery County
Sect. 7, Twp 18, Range 3.
Scale 20' = 1"
Drawn 1940.

N



Providence Cemetery.
Walnut Twp. Montgomery County.
Pt. S.E. 1/4, S.E. 1/4, Sect. 12, Twp. 18N, Range 3W.
Scale 20' = 1"
Drawn 1940.



Church.

300'

To Crawfordville 6 1/2 miles

S.R. #34

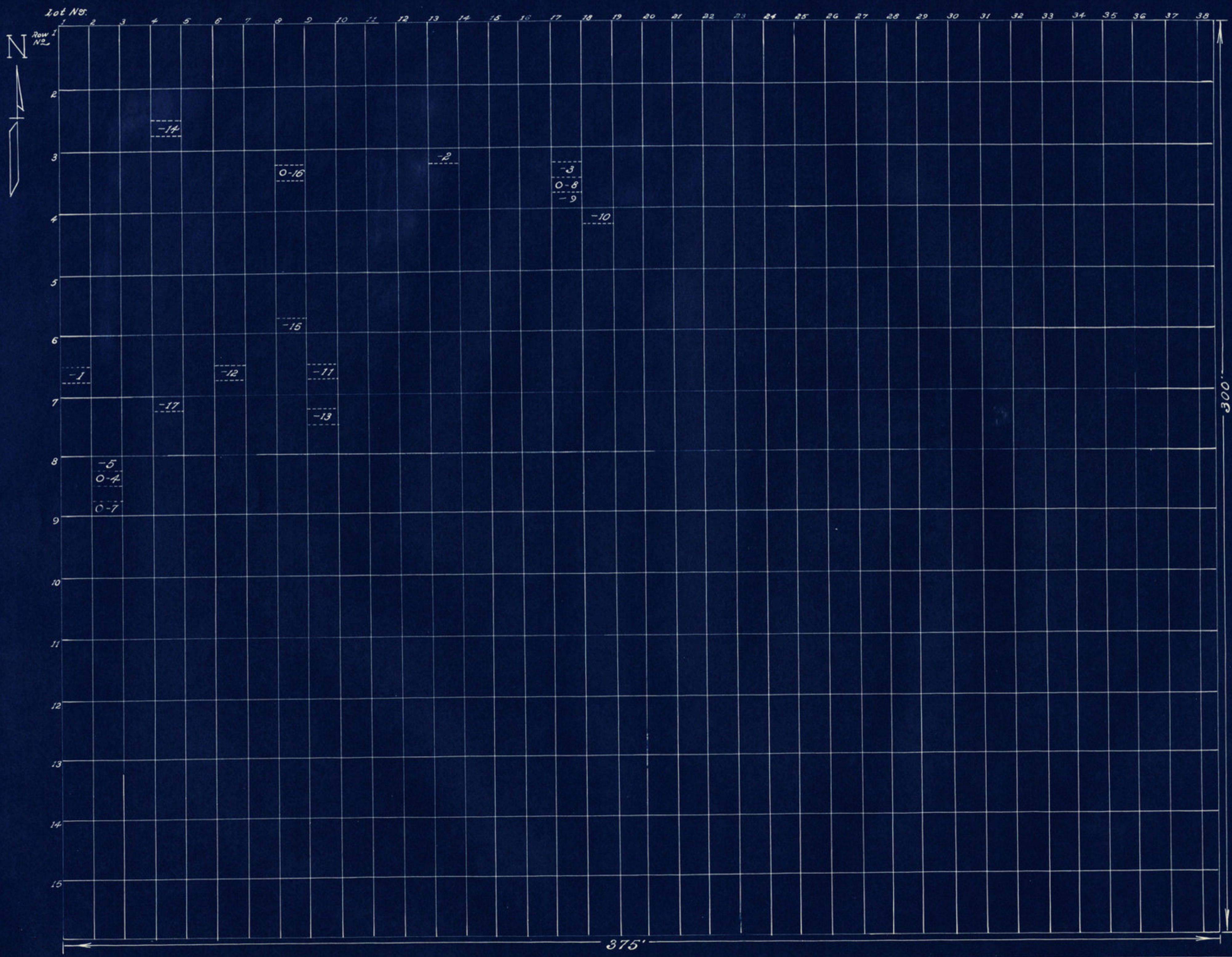
New Ross 3 1/2 miles

375'

Gravel Road

Union Hill Cemetery
Walnut Twp, Montg. Co.
Pt, Sw 1/4, Sw 1/4, Sec, 16, Twp, 18N, Rq, 3W.
Scale 30' - 1"
Drawn 1940

Sheet 1 of 2



Union Hill Cemetery.
 Walnut Twp.
 P4SW1/4, Sec 16, Twp 18N, R 3W.
 Scale 20' = 1"
 Drawn 1940.